



Wenlock Building, Wharf Road

Islington, N1

Asking Price £775,000

A spacious 2 double bedroom, 2 bathroom apartment located on the fifth floor of this sought after development overlooking the canal.



Wharf Road

Islington, N1

- 2 double bedrooms
- 2 bathrooms
- Open-plan kitchen/living space
- Private balcony overlooking the canal basin
- Lift
- Close to transport links



A spacious 2 double bedroom, 2 bathroom apartment located on the fifth floor of this sought after development overlooking the canal basin. The property is extremely well maintained and accommodation is well-proportioned comprising; master bedroom benefitting from two built-in wardrobes and a luxury en-suite with shower; second double bedroom with built-in wardrobes; contemporary master family bathroom with bath and overhead rain-shower; open-plan kitchen/living room leading on to the private balcony overlooking the canal basin; the kitchen is modern and fully-equipped with plenty of cupboard and worktop space making the whole open-plan living area perfect for entertaining. Developed by London & Newcastle in 2008, the development affords superb access to an absolute wealth of local shops, bars and eateries, with particular note to those on Upper Street and Exmouth Market. Angel Underground (Northern Line) provides convenient access to the City. The transport hub that is Kings Cross/ St Pancras International is just 1 stop on the Underground, with superb links to travel around London and to mainland Europe. The bus routes on St John Street, Upper Street, Pentonville Road and City Road are all close by, as are the scenic walks of the canal, along to London Fields. Shoreditch, Hoxton and Old Street are all easily accessible.

Tenure: Leasehold 981 years 2 months

Service Charge: £4281

Ground Rent: £350

Local Authority: London Borough Of Hackney (Council Tax)

Council Tax Band: D

Chestertons Islington Sales

327-329 Upper Street

Islington

London

N1 2XQ

islington@chestertons.co.uk

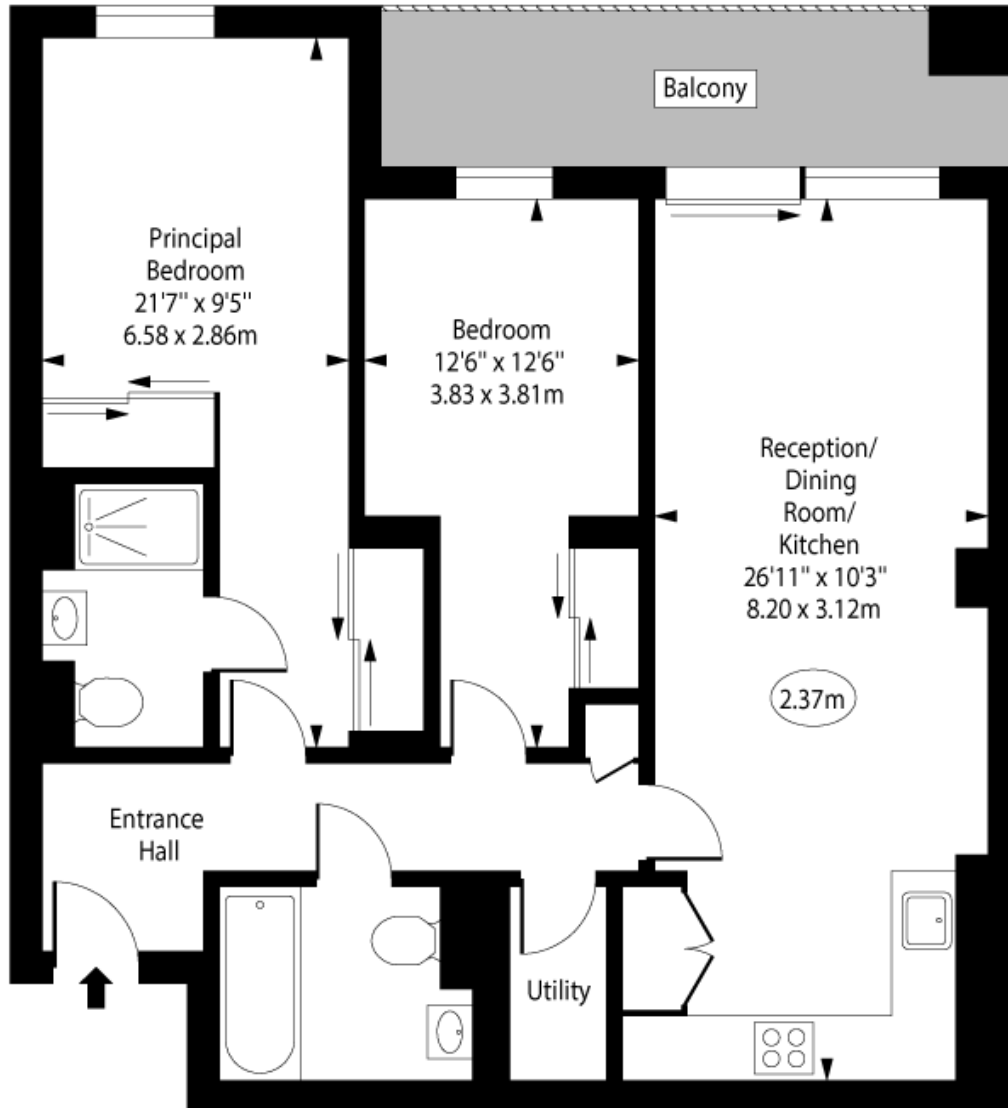
020 7359 9777

chestertons.co.uk

Wharf Road,
Islington, N1



○ - Ceiling Height



Fifth Floor

Approx Gross Internal Area 795 Sq Ft - 73.86 Sq M

For Illustration Purposes Only - Not To Scale

www.goldlens.co.uk

Ref. No. 022744F

Chesterton Global Ltd trading as Chestertons for themselves and for the vendor of this property whose agents they are, give notice that (i) these particulars do not constitute any part of an offer or contract, (ii) all statements contained within these particulars are made without responsibility on the part of Chestertons or the vendor, (iii) whilst made in good faith, none of the statements contained within these particulars are to be relied upon as a statement or representation of fact, (iv) any intending purchasers must satisfy themselves by inspection or otherwise as to the correctness of each of the statements contained within these particulars, (v) the vendor does not make or give either Chestertons or any person in their employment any authority to make or give representation or warranty whatsoever in relation to this property. Wide angle lenses may be used. ©Copyright Chestertons | Chesterton Global Ltd | Registered Office 40 Connaught Street, Hyde Park, London W2 2AB Registered Company Number 05334580.



This paper is
100% recyclable