



Barnsbury Street

Barnsbury, N1

Asking Price £925,000

A stunning 2 double bedroom upper maisonette set within this Grade II listed, Georgian mid-terraced house, located within the Barnsbury conservation area. The property offers spacious accommodation arranged over the second & third floors (top).



Barnsbury Street

Barnsbury, N1

- Grade II listed Georgian conversion
- 2 double bedroom maisonette arranged over the top 2 floors
- Good size reception room and separate kitchen/ dining room
- Close to the amenities of Upper Street & Angel
- Extra storage in the loft which is demised to the property



A stunning 2 double bedroom upper maisonette set within this Grade II listed, Georgian mid-terraced house, within the Barnsbury conservation area. Situated on the section of Barnsbury Street located between Liverpool Road and Upper Street, the property offers spacious accommodation arranged over the second & third floors (top). The second floor is home to a generously sized reception room to the front and a very good size separate kitchen/ dining room to the rear, with views across the gardens to the rear. On the top floor there are 2 double bedrooms and a beautiful bathroom. Barnsbury Street is superbly situated in the heart of Islington, moments away from the many boutiques, eateries and amenities of Upper Street, whilst also offering a brisk walk to both Highbury & Islington station and National Rail (Victoria and North London Line) and Angel Underground (Northern Line). Alternatively the gastro pubs of the Albion and the Drapers Arms can be found locally within Barnsbury, with the supermarkets of Waitrose and Sainsbury's located at the Southern end of Liverpool Road, close to Angel. It is worth noting that there is additional storage in the loft and this loft space is demised and belongs to the property.

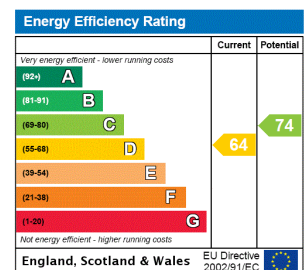
Tenure: Share of Freehold 997 years 7 months

Service Charge: £1500

Ground Rent: £0

Local Authority: Islington Council

Council Tax Band: E



Chestertons Islington Sales

327-329 Upper Street

Islington

London

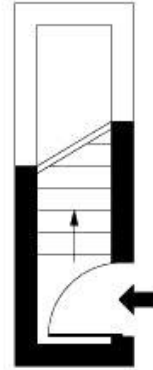
N1 2XQ

islington@chestertons.co.uk

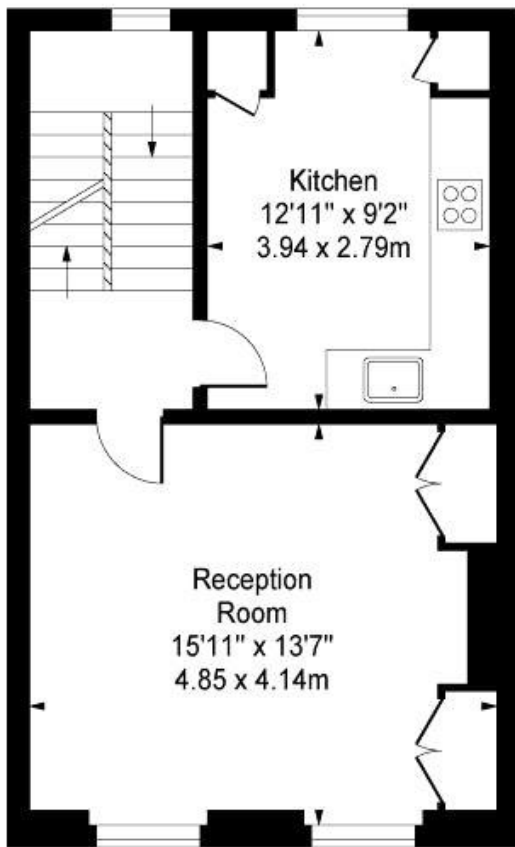
020 7359 9777

chestertons.co.uk

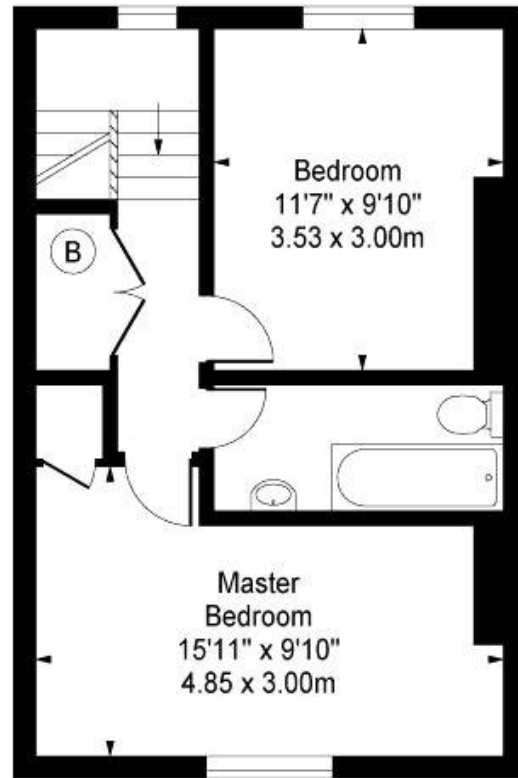
Barnsbury Street, N1 1PW



First Floor Entrance



Second Floor



Third Floor

Approx Gross Internal Area **820 Sq Ft - 76.18 Sq M**

For Illustration Purposes Only - Not To Scale
Floor Plan by www.bpmmediagroup.com
Ref: No. P48187

