

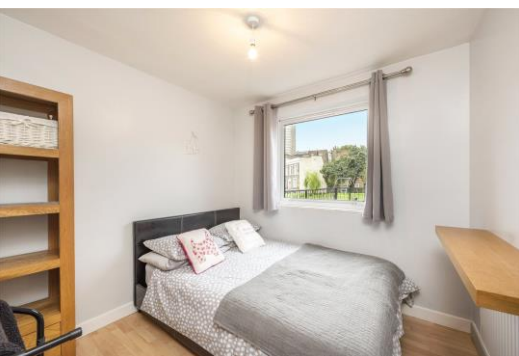


Theseus Walk

Angel, N1

£850,000 Asking Price

A spacious 4 double bedroom ex-local authority house situated in this most convenient of locations, right in the very heart of Angel, moments from the City Road canal basin and the delights of Camden Passage.



Theseus Walk

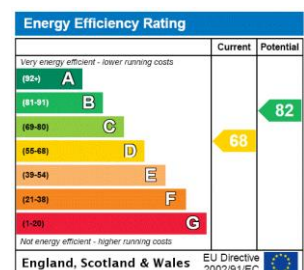
Angel, N1

- Spacious 4 bedroom house
- Separate kitchen/ dining & reception rooms
- Private courtyard garden
- Quiet Angel location
- Superb access to Angel, Exmouth Market, the City and Kings Cross/ St Pancras



A spacious 4 double bedroom ex-local authority house situated in this most convenient of locations, right in the very heart of Angel, moments from the City Road canal basin and the delights of Camden Passage. Accommodation comprises master bedroom with built-in wardrobes, 2 further double bedrooms and a bathroom on the 1st floor. On the ground floor can be found the reception room with access on to the private courtyard garden, separate kitchen, dining room also with access out to the patio garden, guest WC and another good size double bedroom. The house would benefit from updating but provides superb space in a central location and an opportunity to buy a freehold house at the price of a flat. Theseus Walk occupies an enviable position right in the very heart of the Angel between the City Road canal basin and City Road, affording superb access to an absolute wealth of local shops, bars and eateries, with particular note to those on Camden Passage, Upper Street and Exmouth Market. Angel Underground (Northern Line) provides convenient access to the City, as do the buses on City Road, with the transport hub that is Kings Cross/ St Pancras International (Eurostar Terminus) just 1 stop on the Underground, providing superb links to travel around London and to mainland Europe. The canal provides some scenic walks East towards London Fields, with Hoxton, Shoreditch & the City all within easy reach.

Tenure: Freehold



Chestertons Islington Sales

327-329 Upper Street

Islington

London

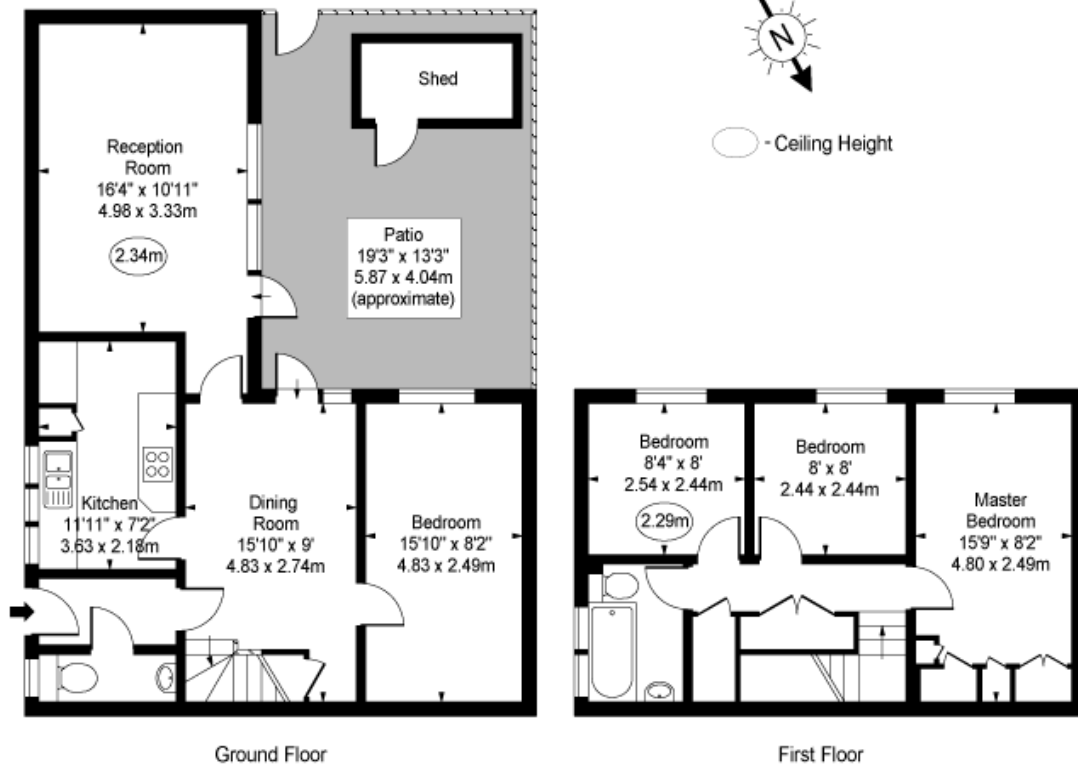
N1 2XQ

sales.islington@chestertons.com

020 7359 9777

chestertons.com

**Theseus Walk,
Angel, N1**



Approx Gross Internal Area 1024 Sq Ft - 95.13 Sq M
(Excluding Shed)

For Illustration Purposes Only - Not To Scale
www.goldens.co.uk
Ref. No. 015908E