



## Carlisle Road, NW6 £7,000 Per Month

AVAILABLE TO LET is this immaculately presented four bedroom Victorian House, offering 1632 sq ft of stylish accommodation, situated on a pretty-tree lined street in the heart of Queens Park.

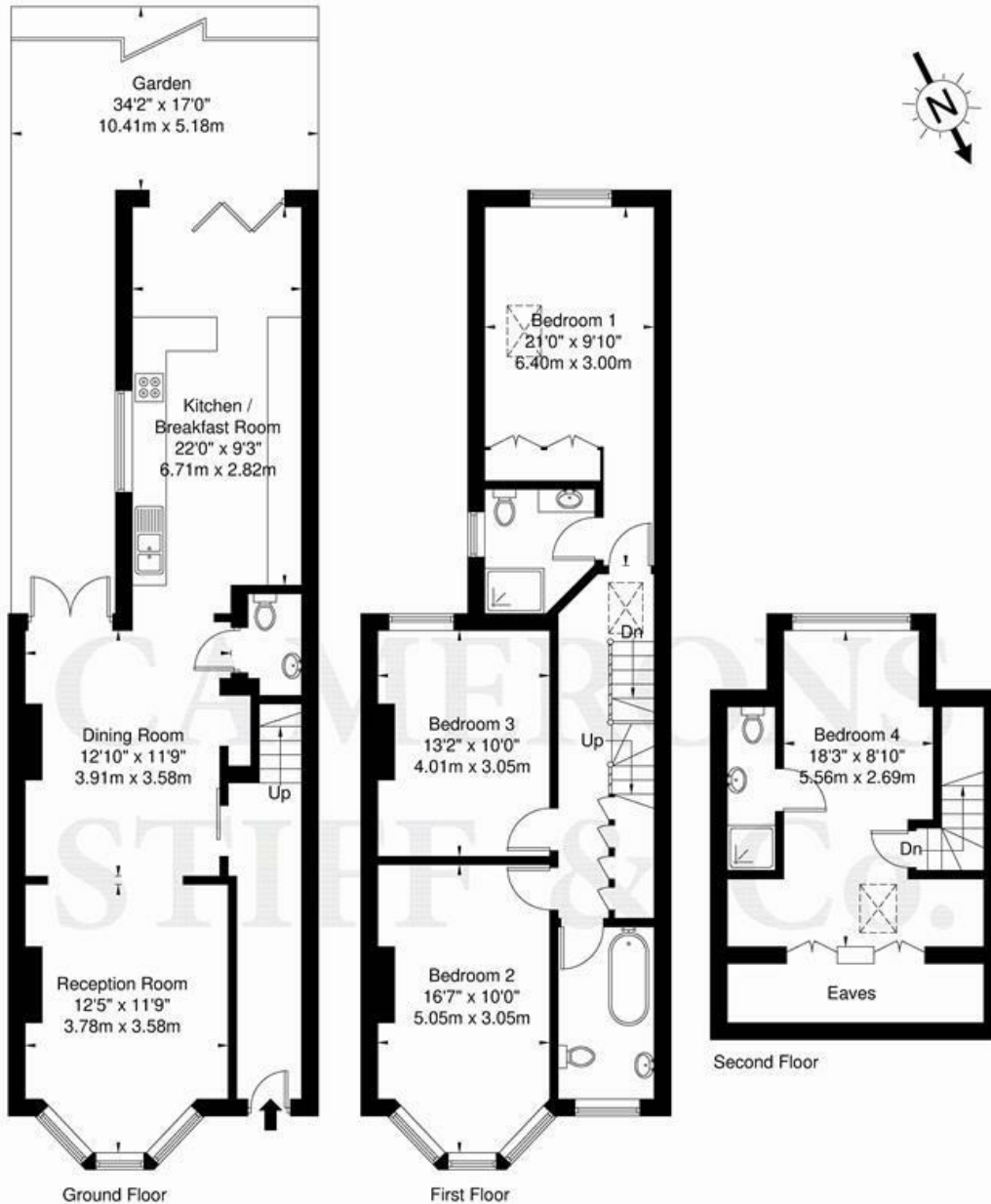
- Elegant 4 bed, 3 bath terraced Victorian house
- Offering 1632 sq ft of beautiful accommodation
- Kitchen/breakfast room, dining room and reception room
- Parquet flooring, period features & balustraded staircase
- 34ft rear private garden
- Transport: Queens Park (Bakerloo - zone 2)
- COUNCIL: Brent (F)
- DEPOSIT: £8,076
- Viewing is highly recommended



020 8450 9377 - 020 8459 1133  
[rentals@cameronsstiff.co.uk](mailto:rentals@cameronsstiff.co.uk)

## Carlisle Road NW6 jpg

Approx. Gross Internal Area = 151.6 sq m / 1632 sq ft



Ref

Copyright THE BLÉU PLAN

Disclaimer : Floor plan measurements are approximate and are for illustrative purposes only. While we do not doubt the floor plan accuracy and completeness, you or your advisors should conduct a careful, independent investigation of the property in respect of monetary valuation.

EPC: D

Ref: 15655629