



Midland Terrace, NW2

TO LET - £2,200 Per Month

AVAILABLE TO LET NOW - is this well presented charming two-bedroom cottage located in Cricklewood the original Railway cottages built in 1860 for the housing the railway workers. Midland Terrace is just one of the five terraces built in Cricklewood then.

Offering 788 sq ft of well laid out living accommodation, the property comprises a spacious reception, modern eat-in kitchen, family bathroom and private decked patio garden. There are two double bedrooms which are serviced by a three piece bathroom set on the First Floor.

Situated close to the amenities of Cricklewood Broadway, the area offers a diverse selection of cafes, shops and restaurants, whilst also being within close proximity to Cricklewood (Thameslink - Zone 3) station.

- Bright 2 bedroom Railway cottage
- Offering 788 sq ft of accommodation
- Spacious eat-in kitchen, private garden
- 2 double bedrooms, bathroom
- Close to Brent Cross Shopping Centre
- DEPOSIT £2,538. COUNCIL: Brent (D)

020 8450 9377

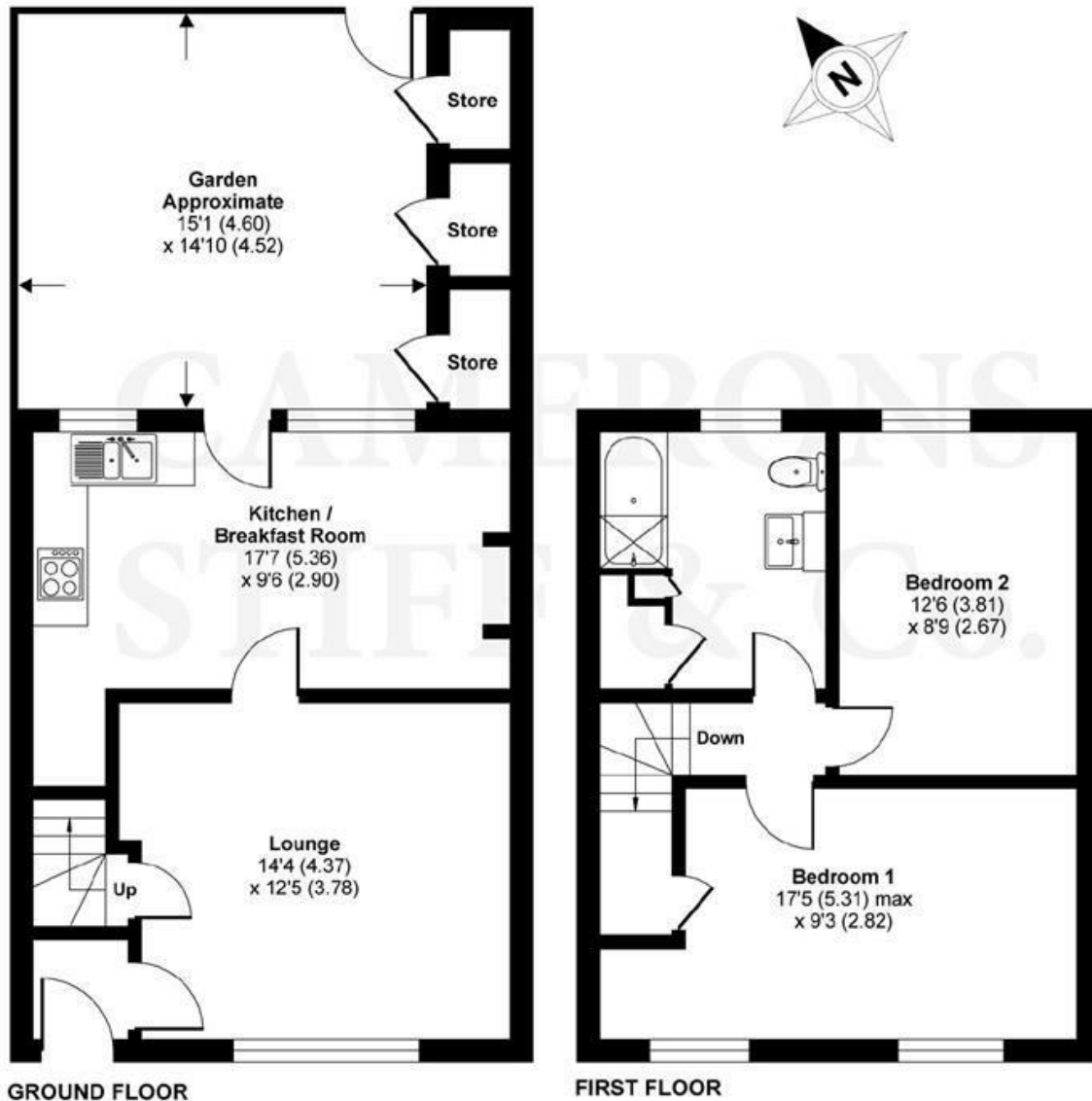
rentals@cameronsstiff.co.uk

cameronsstiff.co.uk



Midland Terrace, London, NW2

APPROX. GROSS INTERNAL FLOOR AREA 788 SQ FT 73 SQ METRES (EXCLUDES STORES)



Whilst every attempt has been made to ensure the accuracy of the floor plan contained here, measurements of doors, windows and rooms are approximate and no responsibility is taken for any error, omission or misstatement. These plans are for representation purposes only as defined by RICS Code of Measuring Practice and should be used as such by any prospective purchaser. Specifically no guarantee is given on the total square footage of the property if quoted on this plan. Any figure given is for initial guidance only and should not be relied on as a basis of valuation.

Copyright nichecom.co.uk 2018 Produced for Camerons Stiff & Co REF : 286335

EPC: C
Ref: 18453632