



## Priory Park Road, NW6 TO LET - £2,750 Per Month

AVAILABLE TO LET is this charming two-bedroom Garden Flat set within a well presented Period property on a pretty tree-lined street.

Offering 709 sq ft of well laid out accommodation, the property comprises a stunning south-facing open-plan kitchen, dining, and reception area with bi-folding doors that lead onto a 70ft private rear garden. The spacious principal bedroom offers elegant decorative cornicing, and bespoke fitted wardrobes. The second bedroom bright and airy is currently used as a nursery/office. Additional highlights include a three-piece bathroom and a separate utility room.

Priory Park Road is within walking distance to Queen's Park and Kilburn. It's just moments from the shops, bars, and eateries of Salusbury and Lonsdale Roads, with Queen's Park Farmers' Market. Excellent transport links include both Queen's Park (Overground and Bakerloo Line - Zone 2).

- 2 bedroom Flat - 709 sq ft with private 70ft rear garden
- South-facing open-plan kitchen/reception
- COUNCIL: Brent (D)
- DEPOSIT: £3,173

020 8450 9377

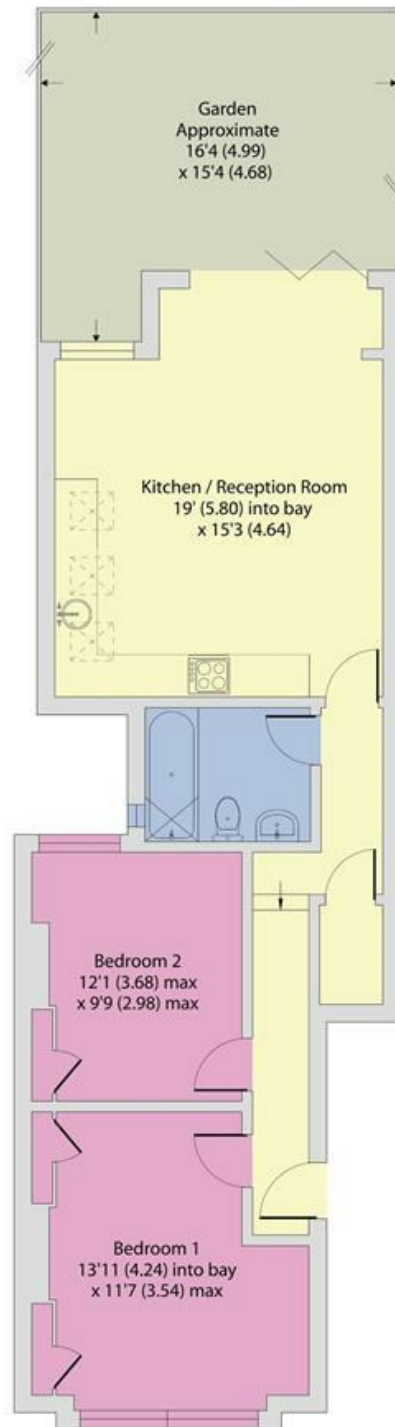
[rentals@cameronsstiff.co.uk](mailto:rentals@cameronsstiff.co.uk)  
[cameronsstiff.co.uk](http://cameronsstiff.co.uk)



## Priory Park Road, London, NW6

Approximate Area = 710 sq ft / 65.9 sq m

For identification only - Not to scale



GROUND FLOOR



Floor plan produced in accordance with RICS Property Measurement 2nd Edition, Incorporating International Property Measurement Standards (IPMS2 Residential). © nichecom 2025. Produced for Camerons Stiff & Co. REF: 1280418

**EPC: C**

Ref: 19421529