



Harlesden Gardens, NW10

TO LET - £2,800 Per Month

AVAILABLE NOW TO LET this stunning, three bedroom garden flat, occupying the Ground Floor of a spacious terraced house. The architect designed apartment offers 896 sq ft of well laid out accommodation that benefits from plenty of storage space, natural light, and polished concrete flooring.

This lovely home has been completely refurbished and tastefully designed with exposed brick and Venetian plaster walls. The stylish open plan kitchen/reception room leading to the garden, makes an excellent entertaining space. There are three double bedrooms, two bathrooms (one en-suite to the main bedroom).

The tree-lined Harlesden Gardens is conveniently located for all local amenities and within walking distance of the charming Roundwood Park, and transport links including Willesden Junction and Harlesden (Overground and Bakerloo Lines- Zone 2) Stations.

- Spacious 3 bedroom Garden Flat
- Offering 896 sq ft of accommodation
- Private rear garden
- Open plan kitchen/reception leading to bright patio
- Within walking distance of local amenities and transport
- Deposit: £3,230. COUNCIL: Brent (C)

020 8450 9377

rentals@cameronsstiff.co.uk

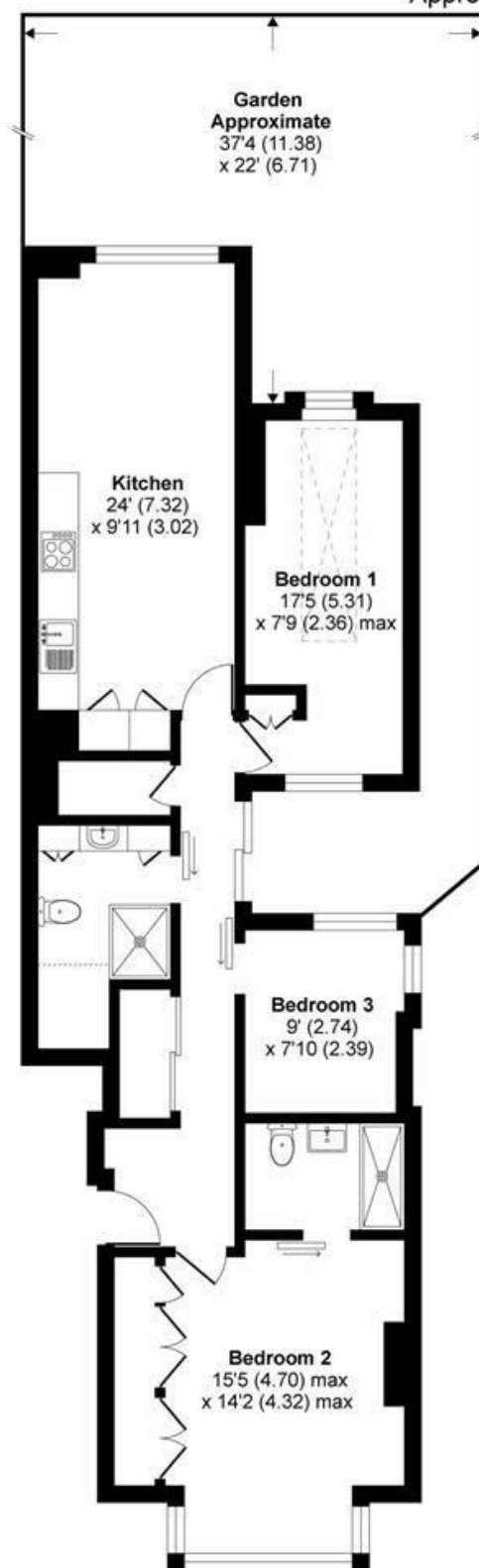
cameronsstiff.co.uk



Harlesden Gardens, London, NW10

Approximate Area = 896 sq ft / 83 sq m

For identification only - Not to scale



GROUND FLOOR

EPC: E

Ref: 15389961



Floor plan produced in accordance with RICS Property Measurement Standards incorporating International Property Measurement Standards (IPMS2 Residential). © nichecom 2020. Produced for Camerons Stiff & Co. REF: 623549

