



Villiers Road, NW2

TO LET - £4,333 Per Month

AVAILABLE TO LET is this stunning four-bedroom and two-bathroom First Floor apartment set within a private gated development located near Willesden High Road.

Offering 1409 sq ft, the property comprises a stylish open-plan reception/fully fitted kitchen, three modern tiled bathrooms- one of which is an en-suite, four well-sized bedrooms and a private roof terrace with breathtaking views. The property benefits from plenty of storage space and a secure sheltered bicycle storage area (no extra charge).

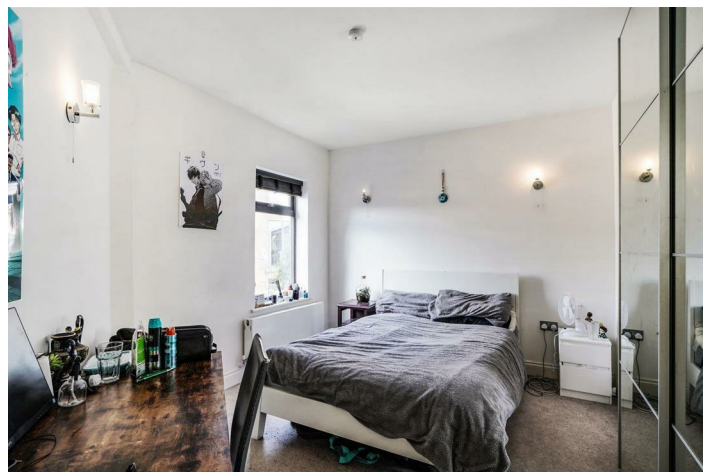
Villiers Road is just moments away from Dollis Hill Station (Jubilee - Zone 3) and serviced by excellent local bus routes. The 86 acre Gladstone Park is in close proximity, boasting an outdoor gym and meticulously maintained tennis courts. Situated just off Willesden High Road, the area has a diverse array of shops, including local delis, and an assortment of independently run restaurants and cafes.

- AVAILABLE TO LET FROM JULY 2025
- 2 bedrooms, 3 bathrooms (1 en-suite)
- Close to the local amenities nearby
- Private roof terrace with impressive views
- COUNCIL: Brent (D). Deposit: £4999

020 8450 9377

rentals@cameronsstiff.co.uk

cameronsstiff.co.uk



Villiers Road, NW2

Approx Gross Internal Area = 130.9 sq m / 1409 sq ft

Driveway = 50.6 sq m / 545 sq ft

Total = 181.5 sq m / 1954 sq ft

For identification only - Not to scale



This floor plan is produced in accordance with RICS Property Measurement Standards incorporating International Property Measurement Standards (IPMS2 Residential). Maximum lengths and widths are represented on the floor plan. Produced for Cameron Stiff & Co. Copyright © BLEUPLAN

EPC: E

Ref: 15073028

