



## Leighton Gardens, NW10 TO LET - £2,600 Per Month

AVAILABLE TO LET is this bright and spacious two bedroom First Floor Flat, arranged over two floors, situated on a pretty tree lined street.

Offering 950 sq ft of well laid out accommodation, the First Floor comprises a bay fronted reception room with a feature fireplace, a double bedroom, family bathroom, and a separate modern kitchen with access to the communal garden. The main bedroom is located on the Top Floor with plenty of storage space and an en-suite shower room.

Leighton Gardens is within a short walk to Chamberlayne Road with a fantastic array of local delis, restaurants, and gastropubs. Nearby is the Willesden Sports Centre with indoor swimming pool. Local transport links include Kensal Rise Overground (Zone 2) & Kensal Green (Overground & Bakerloo-Zone 2) stations and plenty of buses along Chamberlayne Road.

- Bright 2 bedroom First Floor Flat
- Communal garden
- COUNCIL: Brent (D)
- Deposit: £3,000

020 8450 9377  
[rentals@cameronsstiff.co.uk](mailto:rentals@cameronsstiff.co.uk)  
[cameronsstiff.co.uk](http://cameronsstiff.co.uk)

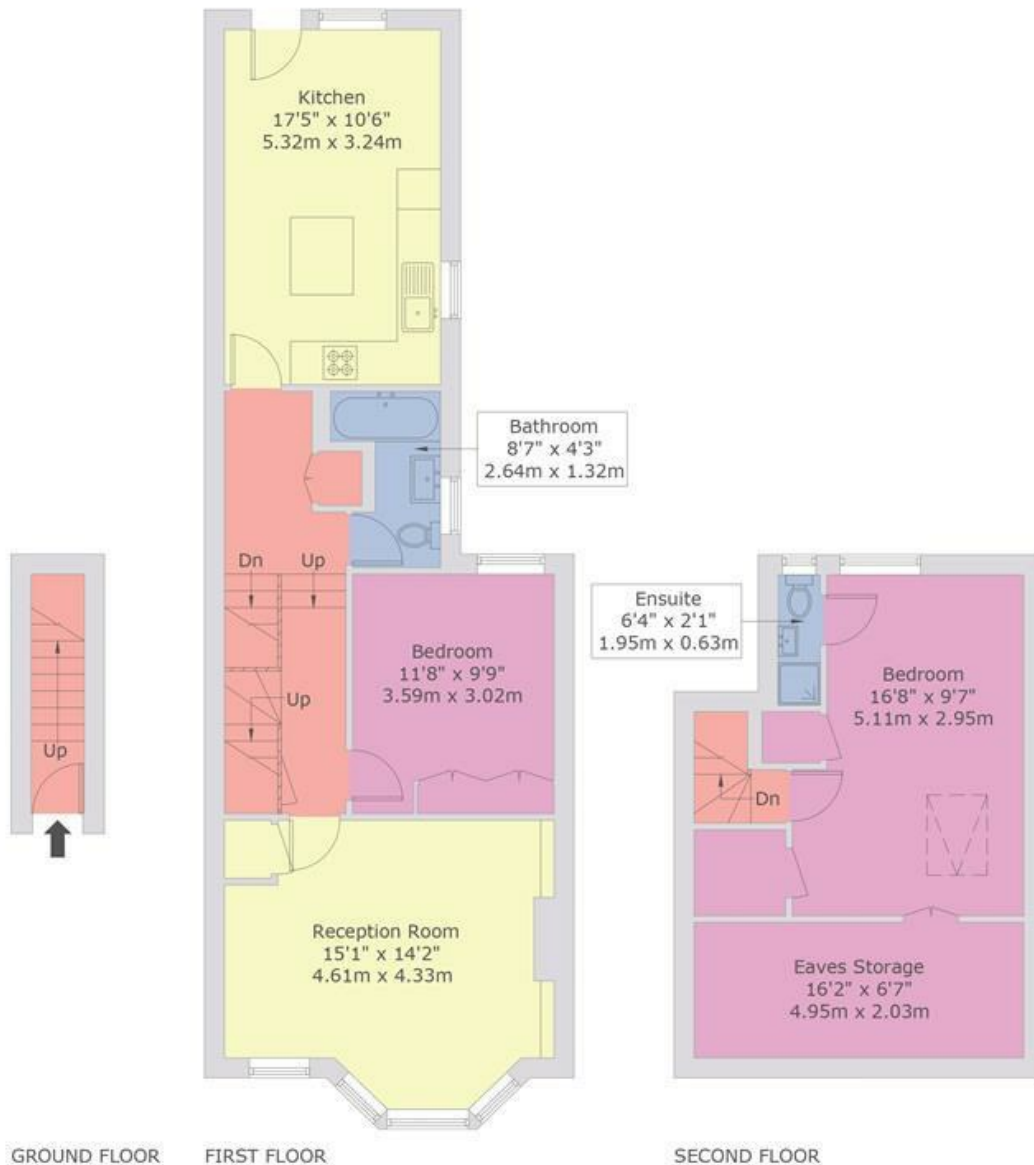


## Leighton Gardens, NW10

Approx Gross Internal Area = 88.22 sq m / 950 sq ft  
 Restricted head height / Eaves = 10.03 sq m / 108 sq ft  
 Total = 98.25 sq m / 1058 sq ft  
 For identification only - Not to scale



 = Reduced Headroom Below 1.5m / 5'0



This floor plan is produced in accordance with RICS Property Measurement Standards incorporating International Property Measurement Standards (IPMS2 Residential).  
 Produced for Cameron Stiff & Co.  
 Copyright © BLEUPLAN

EPC: D

Ref: 19364312

