



High Road, NW10

TO LET - £1,799 Per Month

AVAILABLE TO LET is this bright and spacious two bedroom Flat, set on the Top Floor within this well maintained block situated between Willesden Green and Dollis Hill.

Offering 406 sq ft of well laid out accommodation, the property comprises an open plan modern kitchen/reception room with wood floors and two double bedrooms which are serviced by a three piece bathroom suite.

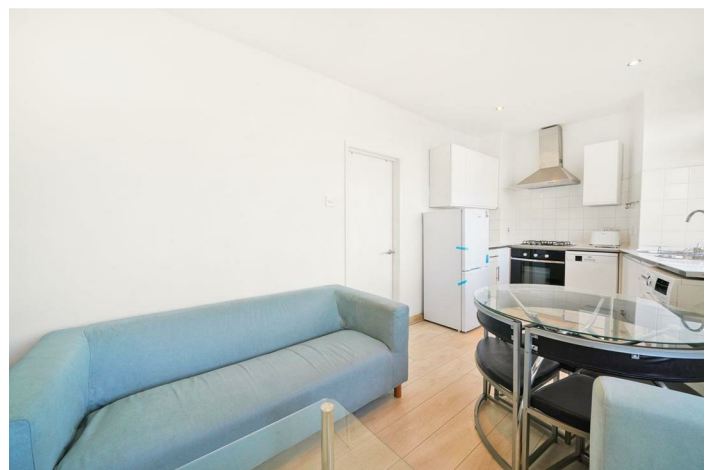
Situated within walking distance to the amenities found on Willesden High Road including an array of delis, restaurants and shopping facilities as well as being in an excellent position just moments away from Willesden Green (Jubilee - Zone 2) Station. The stunning 86 acres of Gladstone Park is a few minutes walk away with its many outdoor activities.

- Bright 2 bedroom Top Floor Flat
- Offering 406 sq ft of accommodation
- Open plan modern kitchen/reception
- Transport: Willesden Green (Jubilee-Zone 2)
- Deposit: £2,075
- COUNCIL: Brent (B)

020 8450 9377

rentals@cameronsstiff.co.uk

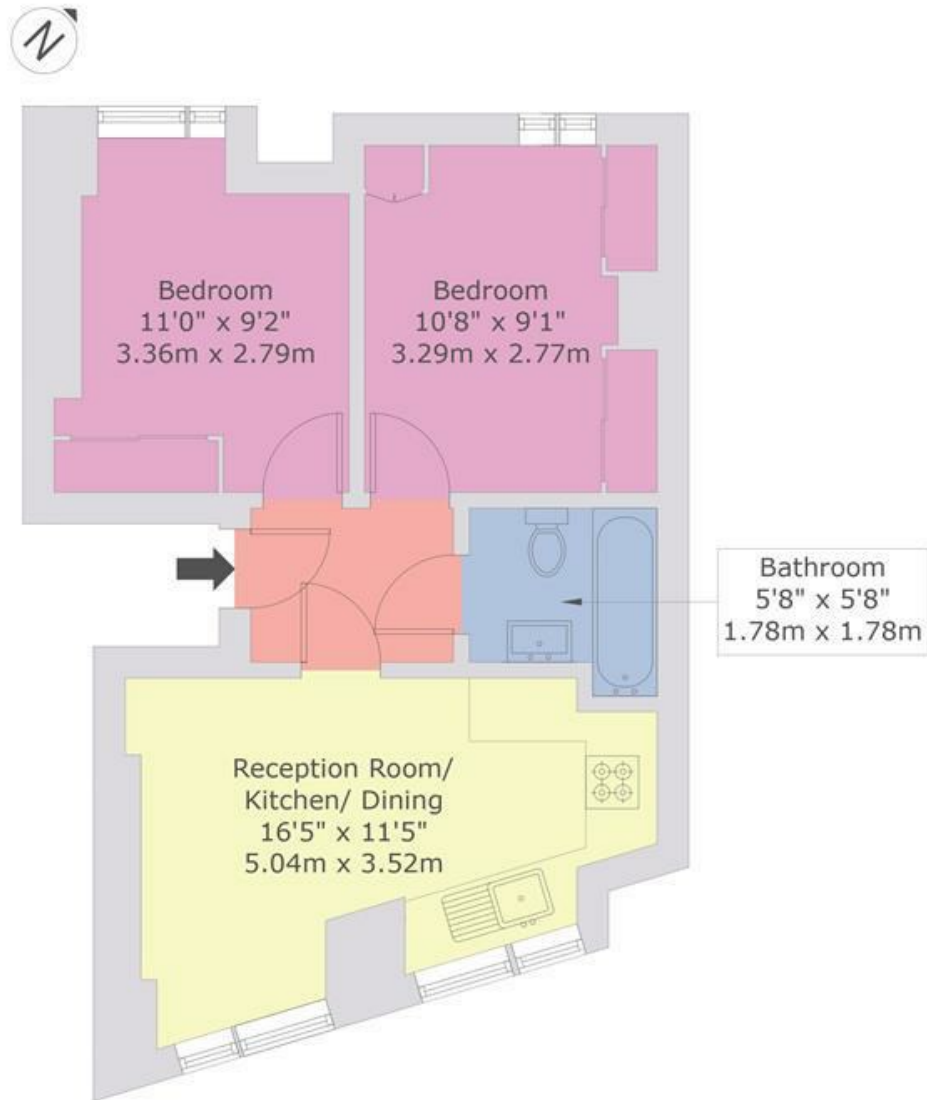
cameronsstiff.co.uk



High Road, NW10

Approx Gross Internal Area = 37.80 sq m / 406 sq ft

For identification only - Not to scale



THIRD FLOOR



This floor plan is produced in accordance with RICS Property Measurement Standards incorporating International Property Measurement Standards (IPMS2 Residential). Maximum lengths and widths are represented on the floor plan. If there is any aspect of particular importance, you should carry out or commission your own inspection of the property. Produced for Cameron Stiff & Co. Copyright @ BLEUPLAN

EPC: D

Ref: 15062698

