



Rusper Close, NW2

TO LET - £1,500 Per Month

AVAILABLE TO LET is this bright and airy one bedroom Flat, set the Second Floor of this purpose built property, situated close to Cricklewood.

Offering 402 sq ft of well laid out accommodation, the property comprises a spacious reception room with hard wood flooring, a separate kitchen and a double bedroom which is serviced by a three piece bathroom suite.

Located within a short distance of Cricklewood Broadway with a multitude of shopping facilities and excellent transport links with the A5, A406, & M1. Cricklewood Thameslink & Kilburn (Jubilee-Zone 2) Stations are both a bus ride away.

- Bright & spacious one bedroom top floor flat
- Modern fitted kitchen with breakfast bar divide
- 402 sq ft of accommodation
- Off-street parking
- Transport: Cricklewood (Thameslink), Kilburn (Jubilee - Zone 2)
- Deposit: £1,788 - Council: Brent (C)

020 8450 9377

rentals@cameronsstiff.co.uk

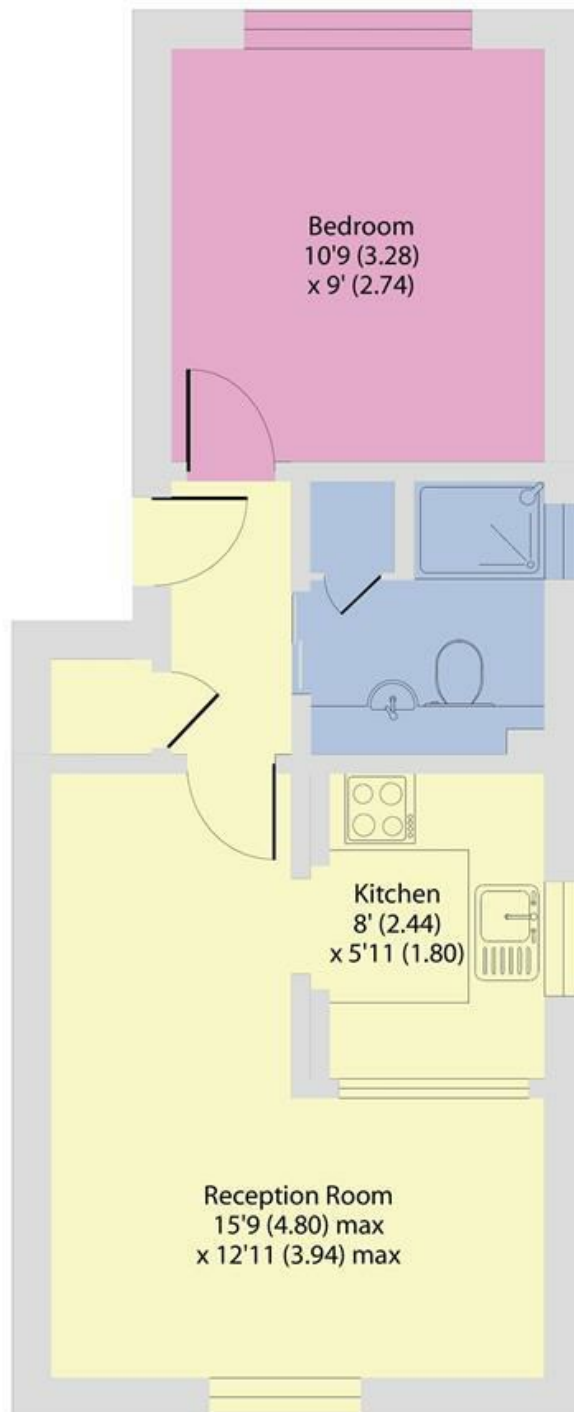
cameronsstiff.co.uk



Rusper Close, London, NW2

Approximate Area = 402 sq ft / 37.3 sq m

For identification only - Not to scale



SECOND FLOOR



Floor plan produced in accordance with RICS Property Measurement 2nd Edition, Incorporating International Property Measurement Standards (IPMS2 Residential). © nichecom 2025. Produced for Camerons Stiff & Co. REF: 955998

EPC: D

Ref: 18458563

