



Victoria Mews (NOT ONLINE), NW6

To Let - £6,500 Per Month

AVAILABLE TO LET is this architecturally designed three bedroom detached house, offering 1506 sq ft of stunning accommodation.

Carefully crafted to optimise natural light and a spacious feel the open-plan reception room flows seamlessly into the kitchen and breakfast bar. This unique home includes a study, a utility room, and three generous en suite bedrooms. Large sliding doors open onto a private courtyard and sizeable patio while a driveway offers convenient off-street parking.

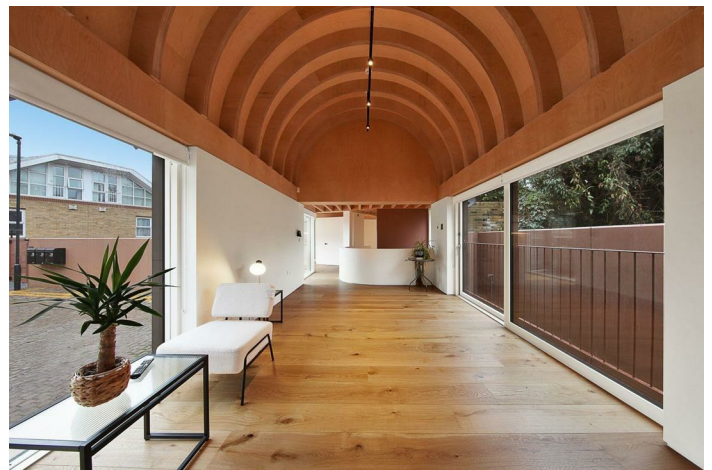
Victoria Mews is in a convenient location close to Queen's Park and Kilburn both with a selection of good restaurants, deli's and cafes. The green expanse of the beautiful Queen's Park offers outdoor space for recreation with its Farmers Market at weekends. Transport include Bakerloo and Overground in and out of London.

- Unique 3 bedroom detached house - 1506 sq ft
- Exposed beams, high ceilings & plenty of light
- Off-street parking & private courtyard
- COUNCIL: Brent (E). Deposit: £7,500

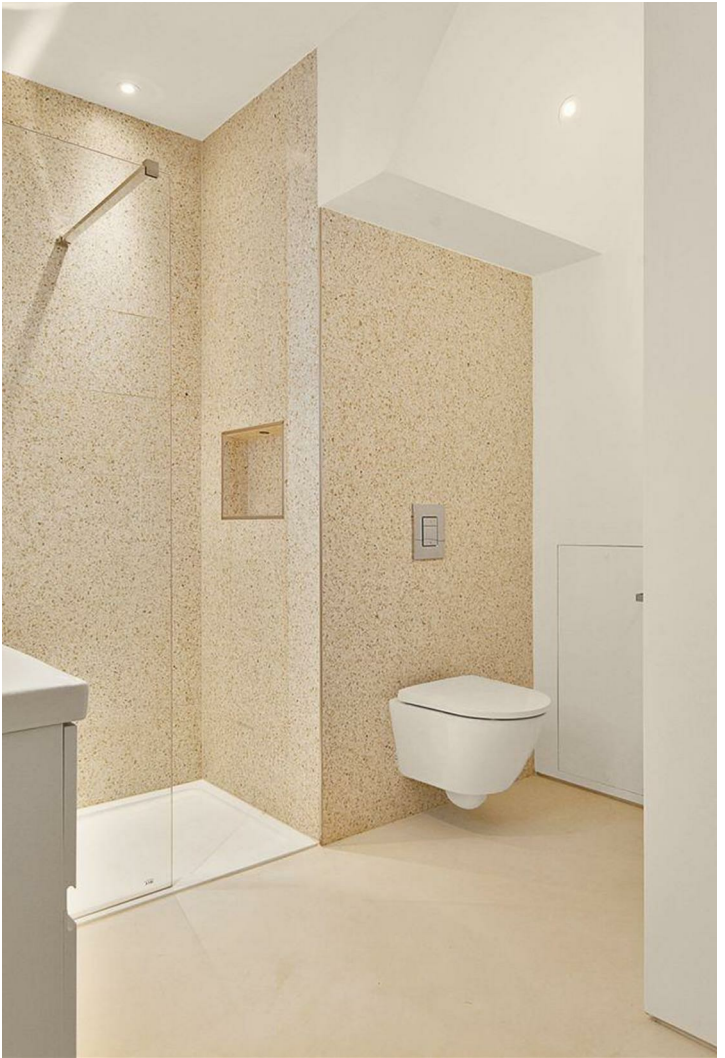
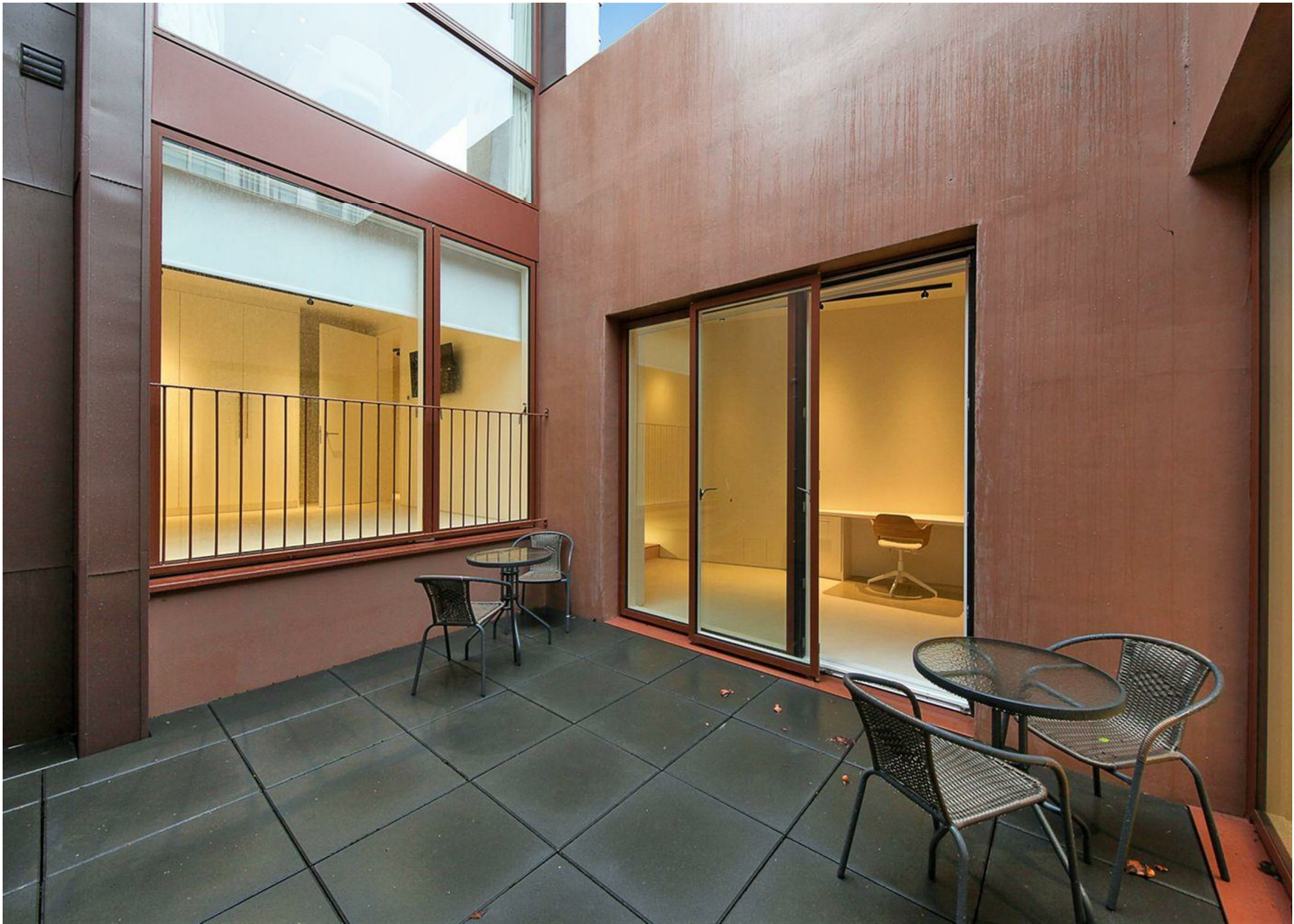
020 8450 9377

rentals@cameronsstiff.co.uk

cameronsstiff.co.uk









Victoria Mews, NW6

Approx Gross Internal Area = 140 sq m / 1506 sq ft

For identification only - Not to scale



EPC: C

Ref: 19203677



**Certified
Property
Measurer**

This floor plan is produced in accordance with RICS Property Measurement Standards incorporating International Property Measurement Standards (IPMS2 Residential). Maximum lengths and widths are represented on the floor plan.

If there is any aspect of particular importance, you should carry out or commission your own inspection of the property.

Produced for Cameron Stiff & Co.

Copyright © BLEUPLAN