



Willesden Lane, NW6

TO LET - £2,600

AVAILABLE TO LET is this recently refurbished three bedroom Ground Floor Flat, situated on Willesden Lane.

Offering 653 sq ft of well laid out accommodation, the property comprises a spacious open plan modern fitted kitchen/reception room, three bedrooms, one with an en-suite shower room and a three piece bathroom.

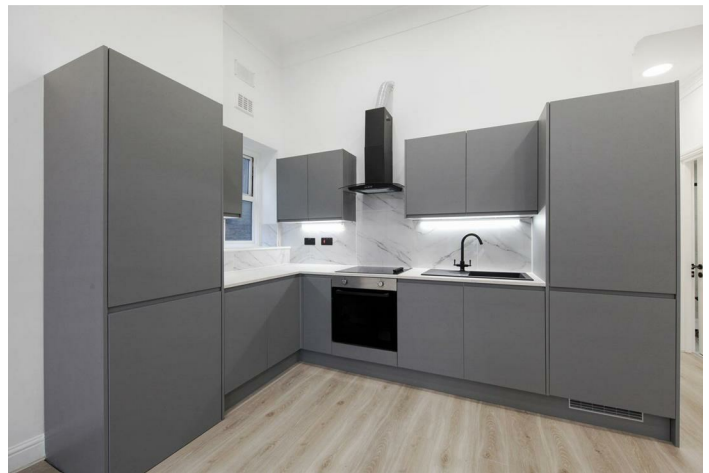
Located just five minutes walk from Brondesbury Park station, Excellent transport links via Willesden Green (Jubilee- Zone 2) & Kilburn (Overground and Jubilee - Zone 2) stations for easy access into Central London. This property is available furnished or unfurnished, the landlord is flexible

- Spacious 3 bedroom Ground Floor Flat
- Offering 653 sq ft of accommodation
- Recently refurbished
- Modern open plan kitchen/reception
- Transport: Willesden Green (Jubilee-Zone 2)
- COUNCIL: Brent (D). Deposit: £2,884

020 8450 9377

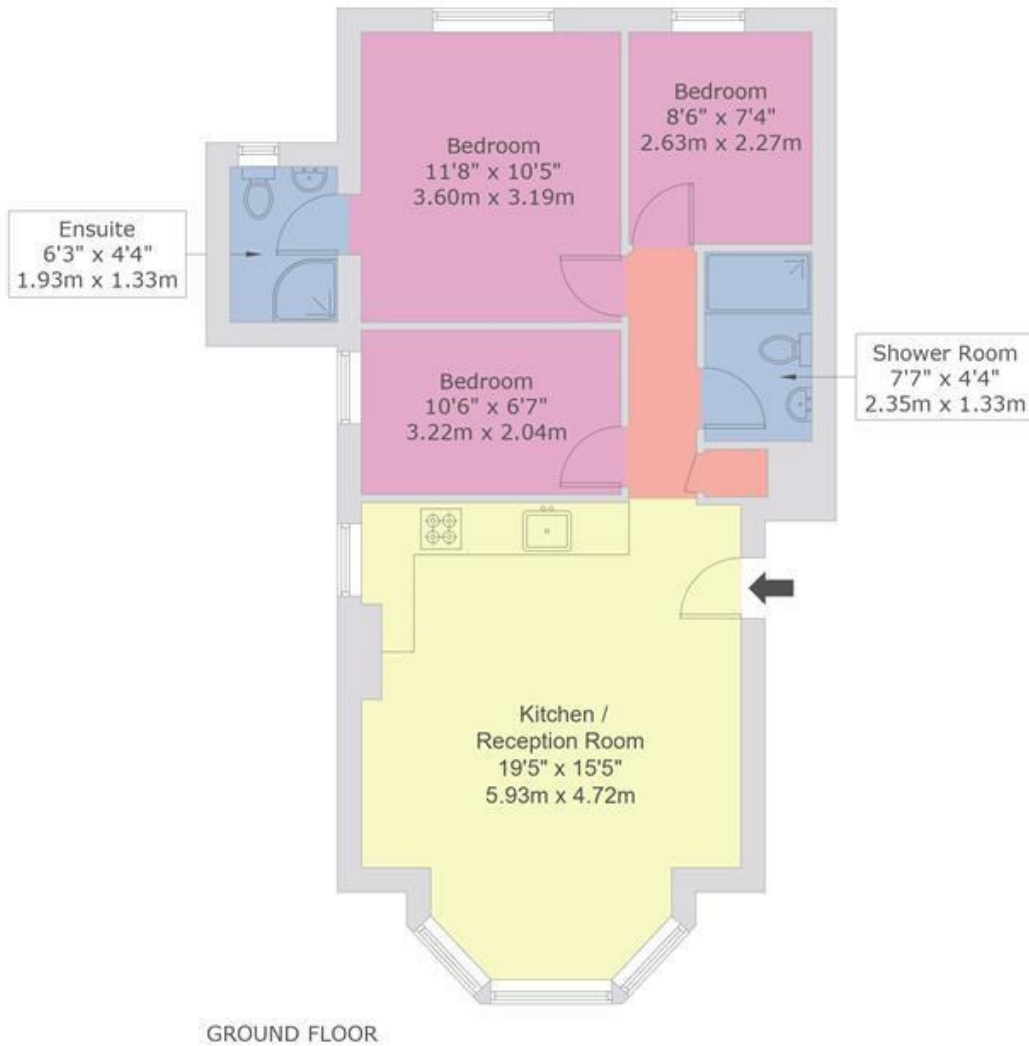
rentals@cameronsstiff.co.uk

cameronsstiff.co.uk



Willesden Lane, NW6

Approx Gross Internal Area = 60.68 sq m / 653 sq ft
For identification only - Not to scale



This floor plan is produced in accordance with RICS Property Measurement Standards incorporating International Property Measurement Standards (IPMS2 Residential).
Produced for Cameron Stiff & Co.
Copyright @ BLEUPLAN

EPC: C
Ref: 19016362

