



Summerfield Avenue, NW6

TO LET - £7,500 Per Month

AVAILABLE TO LET is beautifully presented four bedroom house offering 1437 sq ft of well laid out accommodation, situated on a sought- after road in Queens Park.

The property has been tastefully decorated throughout and the Ground Floor comprises a bright bay fronted dining room, reception room, guest wc and a large stylish kitchen with a breakfast bar and double doors leading onto the 40 ft private garden. The First Floor offers the spacious main bedroom with fitted wardrobes, and three further double bedrooms which are all serviced by a family bathroom and wc.

Situated in a peaceful, tree-lined street, the home is well situated near all the local amenities in the area, such as bistros and cafes, as well as the renowned walking culture of Salusbury & Lonsdale Road. Transport links include: Queen's Park (Bakerloo & Overground- Zone 2) and Brondesbury Park (Overground) stations.

- Stunning 4 bedroom Period home
- Offering 1437 sq ft of stylish accommodation
- Beautifully presented throughout
- 40 ft private garden
- Transport: Queens Park (Bakerloo-Zone 2)
- COUNCIL: Brent (F). Deposit: £8,653

020 8450 9377

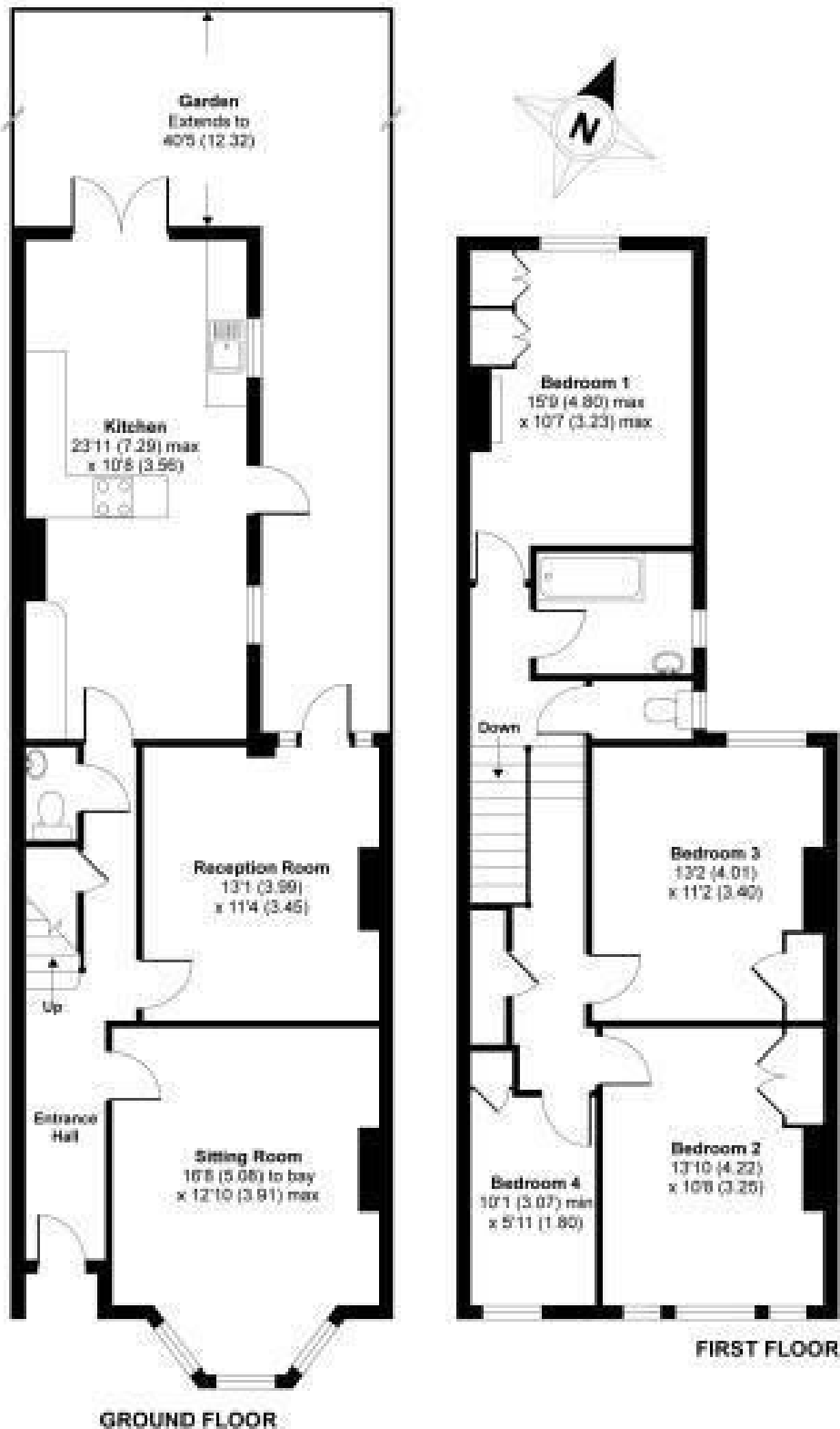
rentals@cameronsstiff.co.uk

cameronsstiff.co.uk



Summerfield Avenue, London, NW6

APPROX. GROSS INTERNAL FLOOR AREA 1437 SQ FT 133.4 SQ METRES



Whilst every attempt has been made to ensure the accuracy of the floor plan contained here, measurements of doors, windows and rooms are approximate and no responsibility is taken for any error, omission or misstatement. These plans are for representation purposes only as defined by RICS Code of Measuring Practice and should be used as such by any prospective purchaser. Specifically no guarantee is given on the total square footage of the property if quoted on this plan. Any figure given is for initial guidance only and should not be relied on as a basis of valuation.

Copyright nichedcom.co.uk 2013 Produced for Queens Park Partnership REF : 398803

EPC: D
Ref: 18430124

