



## Mapesbury Road, NW2

### TO LET - £1,950 Per Month

AVAILABLE TO LET is this bright and charming one bedroom maisonette arranged over the Ground Floor and First Floor, situated within the sought after Mapesbury Conservation Area.

Offering 701 sq ft of well laid out accommodation, the property comprises a stylish kitchen with doors leading to the large reception room with herringbone flooring and a double bedroom which is serviced by shower room and separate WC. Further benefits include the use of a garage/workshop, separate studio/utility, off-street parking and a west-facing private garden.

Mapesbury Road is a quiet, tree-lined residential street close to the local amenities including delis, eateries and gastropubs of Walm Lane, Queens Park and Kilburn. Convenient transport links are within walk distance including Willesden Green (Jubilee- Zone 2), Kilburn (Jubilee-Zone 2) and Queens Park (Bakerloo-Zone 2).

- 1 bedroom maisonette offering 701 sq ft
- Stylish kitchen leading to large reception room
- Private west facing garden
- Off-street parking, garage & studio/utility
- Transport links: Willesden Green and Kilburn (Jubilee- Zone 2)
- COUNCIL: Brent (B) Deposit: £2,250

020 8450 9377

[rentals@cameronsstiff.co.uk](mailto:rentals@cameronsstiff.co.uk)

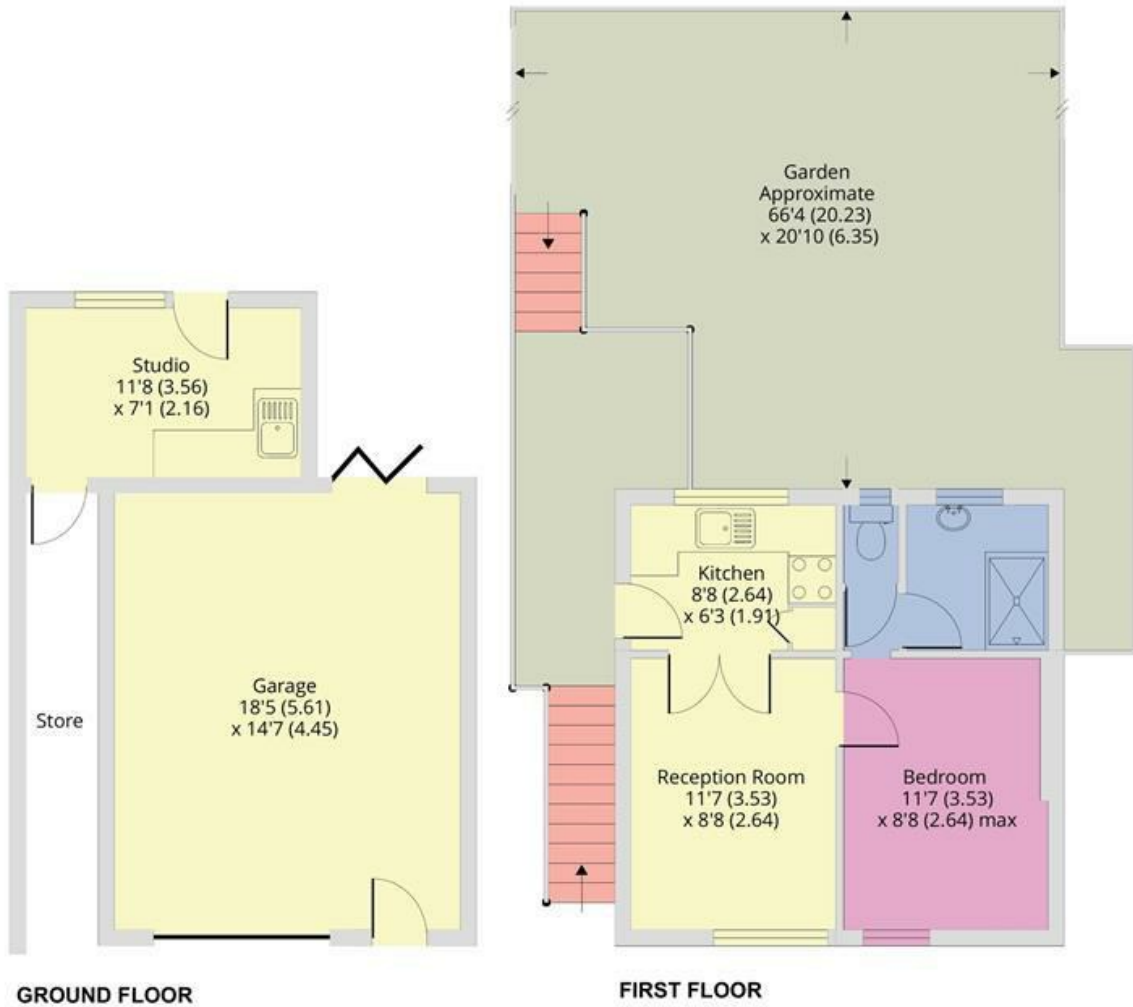
[cameronsstiff.co.uk](http://cameronsstiff.co.uk)



## Mapesbury Road, London, NW2

Approximate Area = 701 sq ft / 65.1 sq m

For identification only - Not to scale



Floor plan produced in accordance with RICS Property Measurement Standards incorporating International Property Measurement Standards (IPMS2 Residential). © nichecom 2024. Produced for Camerons Stiff & Co. REF: 767659

**EPC: E**

Ref: 17373742

