



Alexander Avenue, NW10

To Let - £7,500 Per Month

TO LET is this stunning five bedroom detached double-fronted family home, offering 2920 sq ft of well laid out accommodation, situated within the sought-after Dobree Estate.

Flooded with natural light and hard wooden flooring throughout, the Ground Floor comprises a spacious bay fronted reception room with a feature fireplace and a large open plan dining room/kitchen with an island and double doors leading onto the private south-facing garden. A guest W/C and utility completes this floor. The First Floor comprises four large bedrooms which are serviced by a shower room and beautiful family bathroom. The principle bedroom is located on the Second Floor with a Juliet balcony, dressing room and an en-suite bathroom.

The location of the property is also ideal, with Kensal Rise (Overground) and Willesden Green (Jubilee - Zone 2) just a short distance away. Both areas offer an array of amenities, including restaurants, cafes, and shops, providing an excellent opportunity for socialising and entertainment.

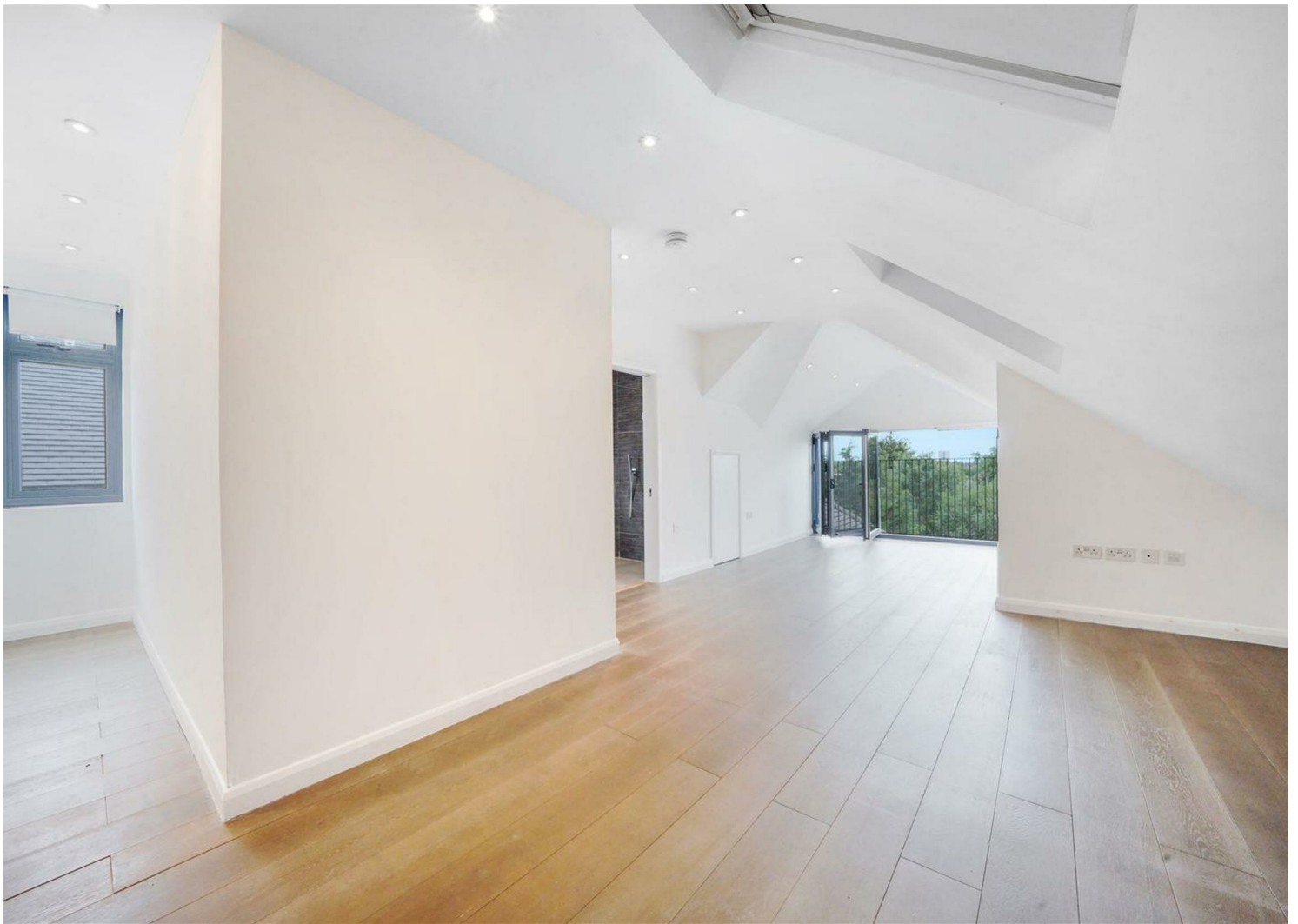
- Stunning 5 bedroom detached family home
- Offering 2920 sq ft of well laid out accommodation
- Off-street parking & rear garage
- Transport: Willesden Green (Jubilee-Zone 2)
- COUNCIL: Brent (G). Deposit: £10,384

020 8450 9377

rentals@cameronsstiff.co.uk

cameronsstiff.co.uk







Alexander Avenue, NW10

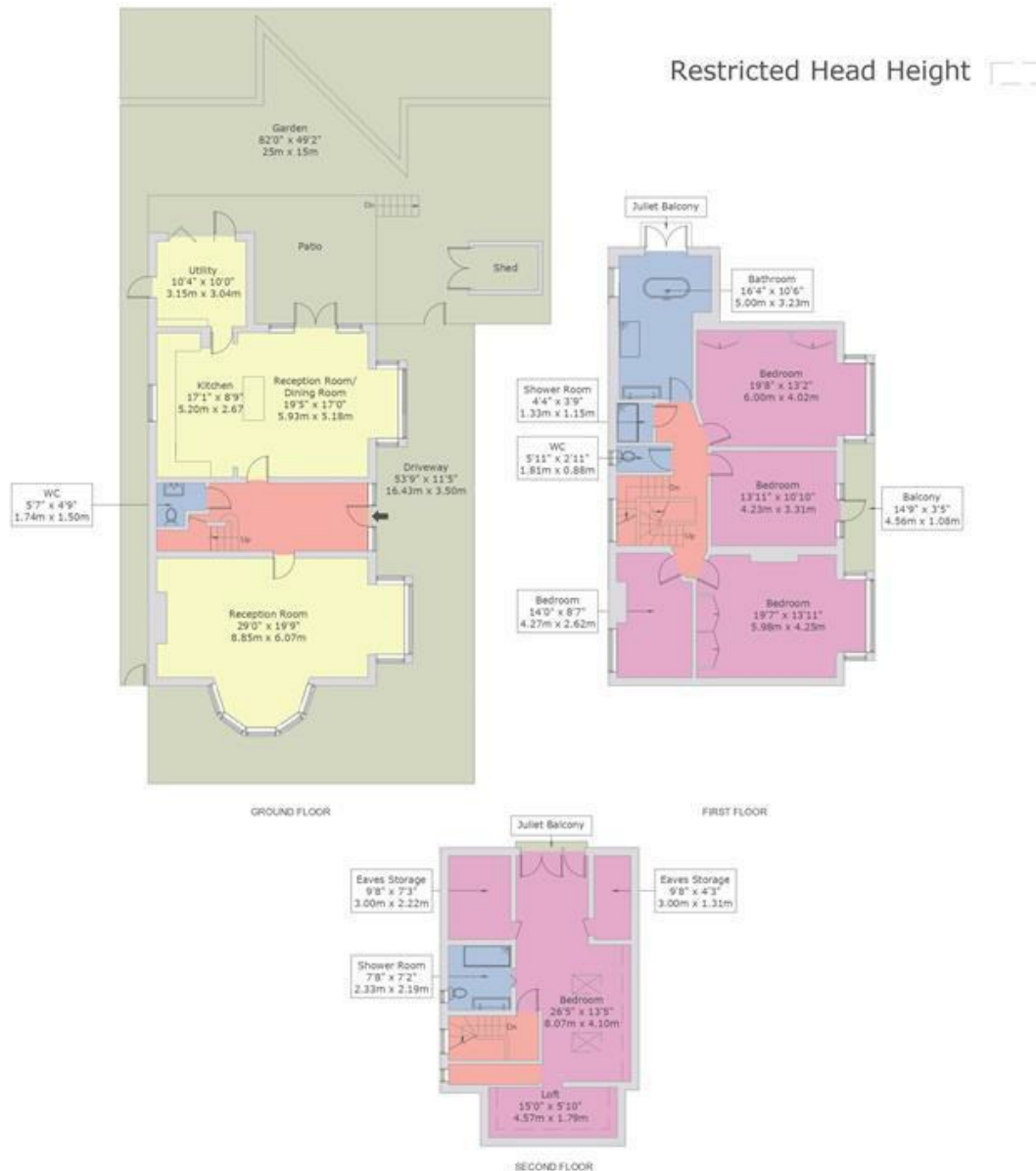
Approx Gross Internal Area = 271.36 sq m / 2920 sq ft

Eaves Storage = 10.57 sq m / 113 sq ft

Restricted Head Height = 3.75 sq m / 40 sq ft

Total = 285.68 sq m / 3075 sq ft

For identification only - Not to scale



This floor plan is produced in accordance with RICS Property Measurement Standards incorporating International Property Measurement Standards (IPMS2 Residential). Maximum lengths and widths are represented on the floor plan. If there is any aspect of particular importance, you should carry out or commission your own inspection of the property. Produced for Cameron Stiff & Co. Copyright @ BLEUPLAN

EPC: E
Ref: 19016466

