



## Dartmouth Road, NW2

### TO LET - £2,400 Per Month

AVAILABLE TO LET- is this enviable two bedroom Top Floor apartment, set within this stunning Period property situated on a pretty tree lined road in the Mapesbury Conservation Area.

Offering 869 sq ft of stylish accommodation, the property is reached by a staircase leading directly into the bright and spacious open plan modern kitchen/reception with hard wooden flooring. Accommodation also includes two large bedrooms with plenty of storage space, which are serviced by a three piece bathroom.

Situated in Willesden Green, the property is moments away from Willesden Green station (Jubilee - Zone 2). The area offers an excellent array of local deli's, restaurants and the green open spaces of the award winning 86-acre Gladstone Park.

- Stylish 2 bedroom Second Floor Flat
- Offering 869 sq ft of well laid out accommodation
- Bright open plan modern kitchen/reception
- Transport: Willesden Green (Jubilee-Zone 2)
- Deposit: £2,769
- COUNCIL: Brent (C)

020 8450 9377

[rentals@cameronsstiff.co.uk](mailto:rentals@cameronsstiff.co.uk)

[cameronsstiff.co.uk](http://cameronsstiff.co.uk)



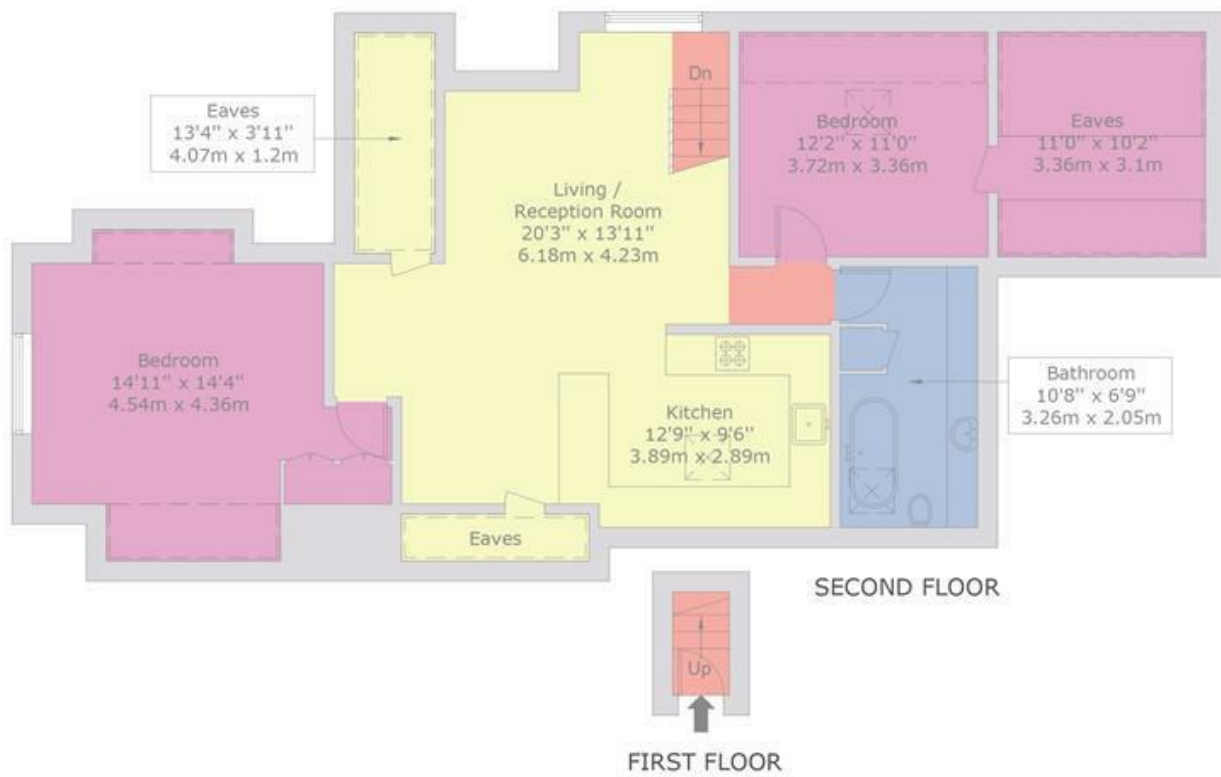
## Dartmouth Road, NW2

Approx Gross Internal Area = 80.7 sq m / 869 sq ft

Restricted head height = 23.5 sq m / 253 sq ft

Total = 104.2 sq m / 1122 sq ft

For identification only - Not to scale



This floor plan is produced in accordance with RICS Property Measurement Standards incorporating International Property Measurement Standards (IPMS2 Residential). Maximum lengths and widths are represented on the floor plan. Produced for Cameron Stiff & Co. Copyright © BLEUPLAN

EPC: C

Ref: 15070797

