



## Blenheim Gardens, NW2

**TO LET - £2,200 Per Month**

AVAILABLE TO LET- is this two bedroom First Floor apartment set within this Victorian conversion situated on a sough-after road in Willesden Green.

Offering 736 sq ft of well laid out accommodation, the property comprises a guest W/C, a large reception room which leads onto the separate modern fully fitted kitchen and two good sized bedrooms which are serviced by a family bathroom.

Blenheim Gardens is a quiet, tree lined residential street in Willesden Green, just seconds away from Willesden Green (Jubilee-Zone 2) and close to Walm Lane which offers restaurants, bars, delis and a wide range of shopping facilities.

- 2 bedroom First Floor apartment
- Offering 736 sq ft of accommodation
- Fully fitted modern kitchen
- Transport includes Willesden Green (Jubilee- Zone 2)
- Deposit: £2,538
- COUNCIL: Brent (D)

020 8450 9377

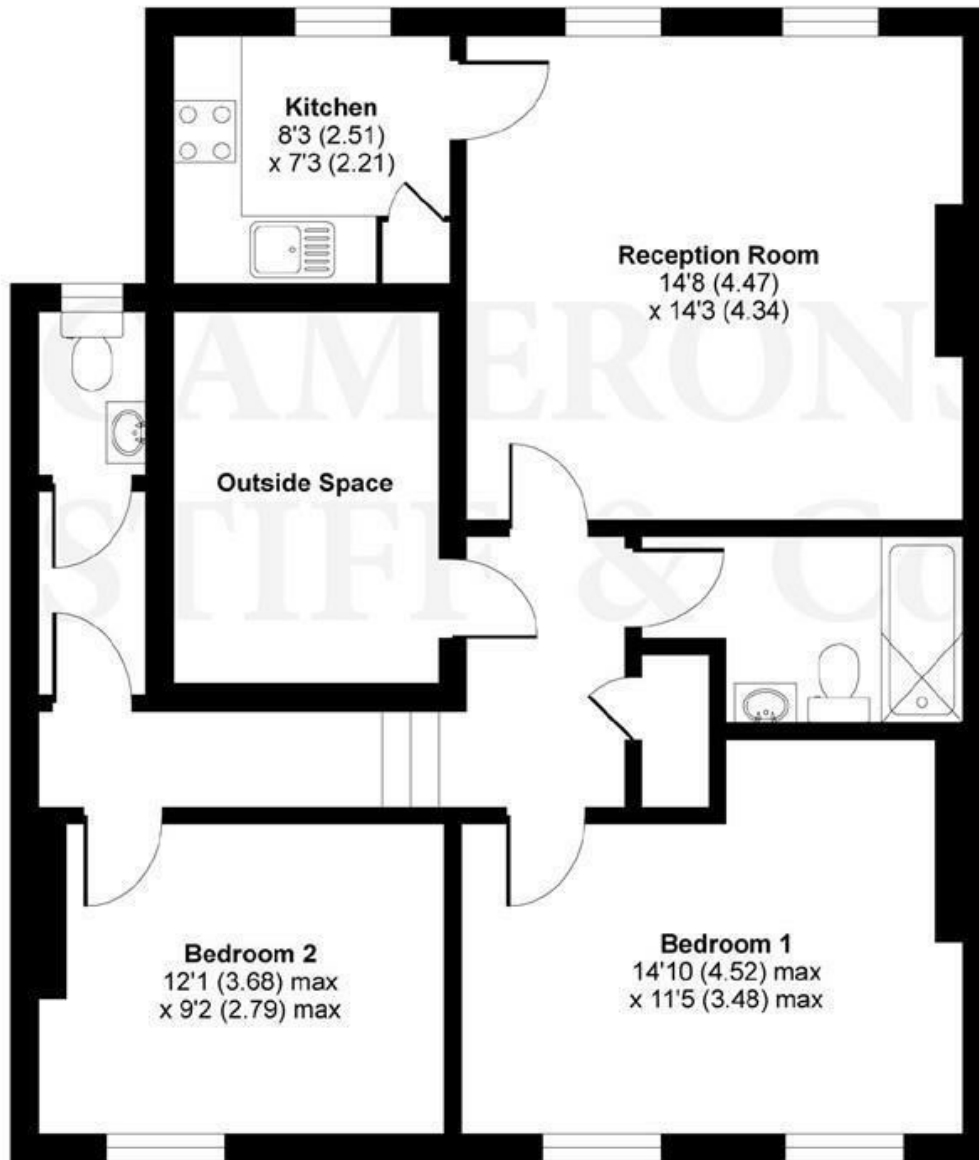
rentals@cameronsstiff.co.uk

cameronsstiff.co.uk



## Blenheim Gardens, London, NW2

APPROX. GROSS INTERNAL FLOOR AREA 736 SQ FT 68.4 SQ METRES (EXCLUDES OUTSIDE SPACE)



**FIRST FLOOR**

Whilst every attempt has been made to ensure the accuracy of the floor plan contained here, measurements of doors, windows and rooms are approximate and no responsibility is taken for any error, omission or misstatement. These plans are for representation purposes only as defined by RICS Code of Measuring Practice and should be used as such by any prospective purchaser. Specifically no guarantee is given on the total square footage of the property if quoted on this plan. Any figure given is for initial guidance only and should not be relied on as a basis of valuation.

Copyright nichecom.co.uk 2018 Produced for Camerons Stiff & Co REF : 329974

EPC: C  
Ref: 15083620

