



Crouch Road, NW10

TO LET - £2,800 Per Month

Available to let- is this stylish five bedroom mid-terrace house, offering 1040 sq ft of well laid out accommodation, situated close to Willesden.

The property has been refurbished to a high specification throughout and the Ground Floor comprises a spacious reception room and a bright modern fitted kitchen/dining room which leads onto the private south-facing garden. The bedrooms are located on the First and Second Floors which are all serviced by a family bathroom.

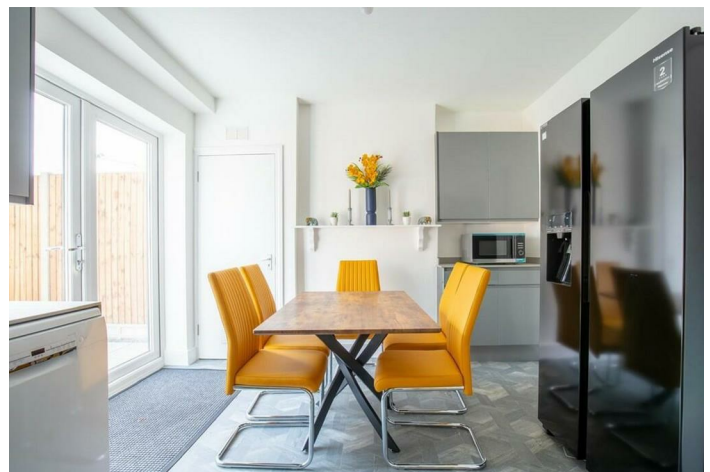
Situated on a quiet residential road, the property is close to shops and local amenities of Harlesden and Willesden. Local transport links include Willesden Junction (Bakerloo-Zone 2) and Harlesden (Bakerloo-Zone 2).

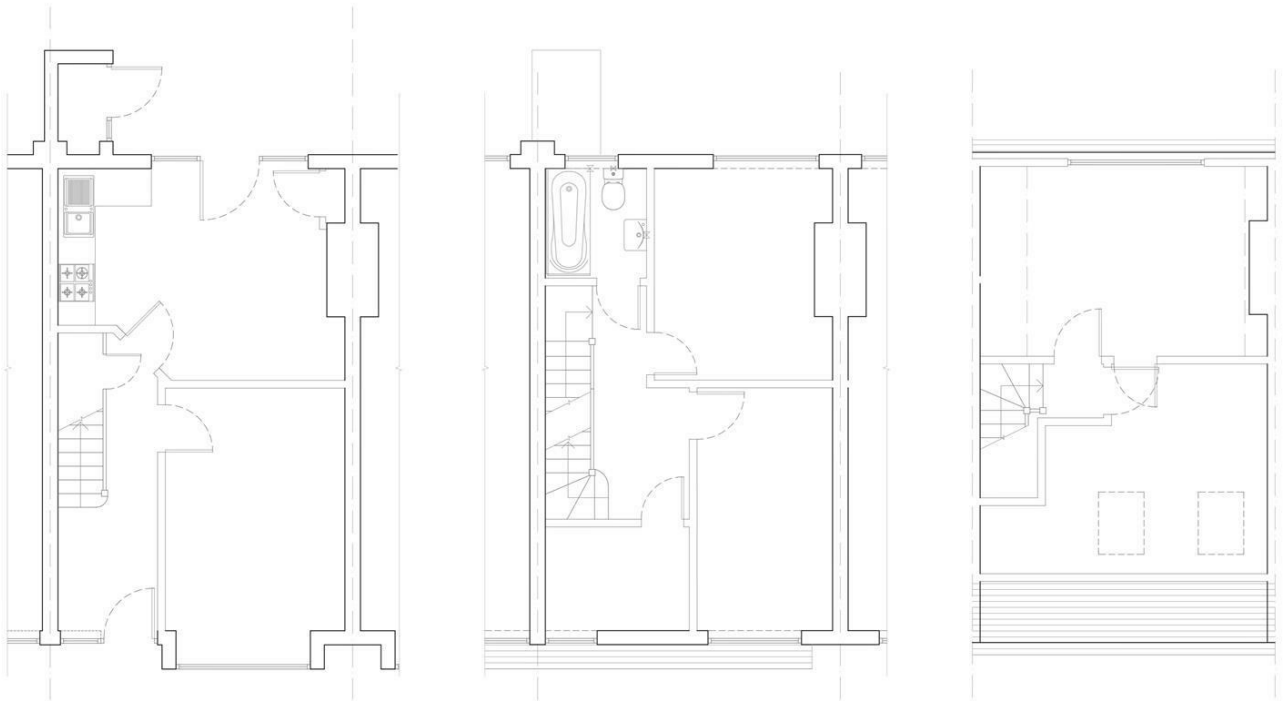
- Spacious 5 bedroom mid-terrace house
- Offering 1040 sq ft of well laid out accommodation
- Refurbished to high specification
- Private south-facing garden & front patio
- Deposit: £3230
- COUNCIL: Brent (D)

020 8450 9377

rentals@cameronsstiff.co.uk

cameronsstiff.co.uk





EPC: C
Ref: 18989170