



## Victoria Road, NW6

### TO LET - £1,800 Per Month

AVAILABLE TO LET UNFURNISHED - is this well presented one bedroom flat set on the Top Floor of a converted Victorian house, situated in the heart of the sought-after Queens Park.

Offering 533 sq ft of well laid out accommodation, the property comprises a bright reception with a feature fireplace, a lovely separate fully fitted kitchen and a double bedroom which is serviced by a tiled three piece bathroom.

This delightful property is set on a quiet tree-lined street, just a short walk away from the highly popular Salusbury Road and the beautiful Queen's Park that hosts an array of delis, café, boutique shops and gastropubs. Excellent transport links to Central London include Queen's Park Station (Bakerloo- Zone 2), as well as 24-hour bus service.

- Lovely 1 bedroom Top Floor Flat
- Offering 533 sq ft of well laid out accommodation
- Stylish modern fitted kitchen
- Transport: Queens Park (Bakerloo- Zone 2)
- Deposit: £2,076
- COUNCIL: Brent (C)

020 8450 9377

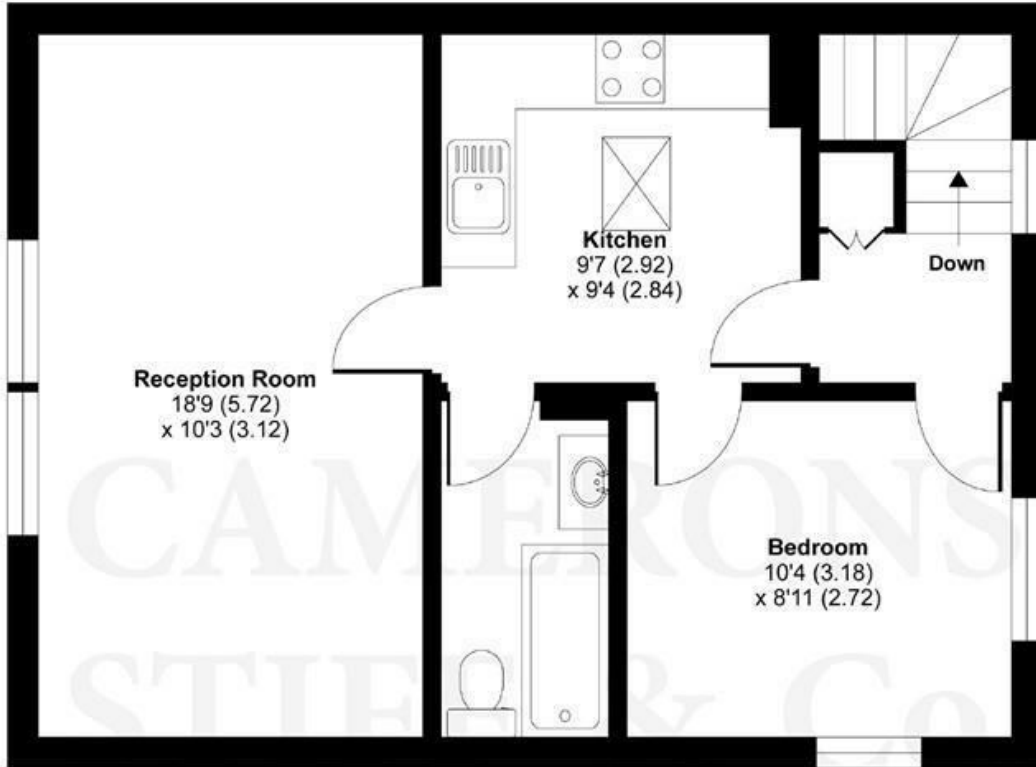
[rentals@cameronsstiff.co.uk](mailto:rentals@cameronsstiff.co.uk)

[cameronsstiff.co.uk](http://cameronsstiff.co.uk)

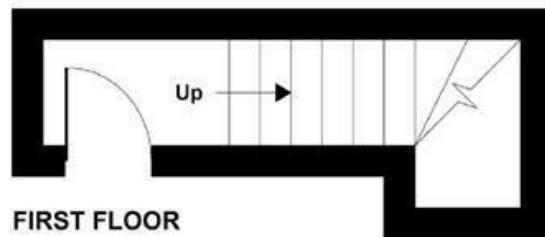


## Victoria Road, Queens Park, London, NW6

APPROX. GROSS INTERNAL FLOOR AREA 533 SQ FT 49.5 SQ METRES



SECOND FLOOR



FIRST FLOOR

Whilst every attempt has been made to ensure the accuracy of the floor plan contained here, measurements of doors, windows and rooms are approximate and no responsibility is taken for any error, omission or misstatement. These plans are for representation purposes only as defined by RICS Code of Measuring Practice and should be used as such by any prospective purchaser. Specifically no guarantee is given on the total square footage of the property if quoted on this plan. Any figure given is for initial guidance only and should not be relied on as a basis of valuation.

Copyright nichecom.co.uk 2017 Produced for Camerons Stiff & Co REF : 163266

EPC: C  
Ref: 15083009

