



Willesden Lane, NW2

To Let - £1,400 Per Month

AVAILABLE TO LET FROM 10/07/2024 is this charming one-bedroom apartment laid out over the First Floor of a period building on the popular Willesden Lane.

The property is in excellent condition and is currently being offered PART-FURNISHED. The accommodation benefits from a bright living room, followed by a spacious bedroom, a three-piece family suite and a modern kitchen with fitted appliances.

Situated moments away from the local amenities on Willesden High Road including a superb array of independent eateries, upmarket delis and shops. Excellent transport links can be found within a two-minute walk at Willesden Green (Jubilee – Zone 2) station as well as local bus routes.

- AVAILABLE FROM 10/07/2024
- OFFERED PART-FURNISHED
- One large bedroom
- Open plan living/ kitchen with integrated appliances
- The open space of Gladstone Park is easily accessible
- Council: Brent (B) Deposit: £1,615

020 8450 9377

rentals@cameronsstiff.co.uk

cameronsstiff.co.uk



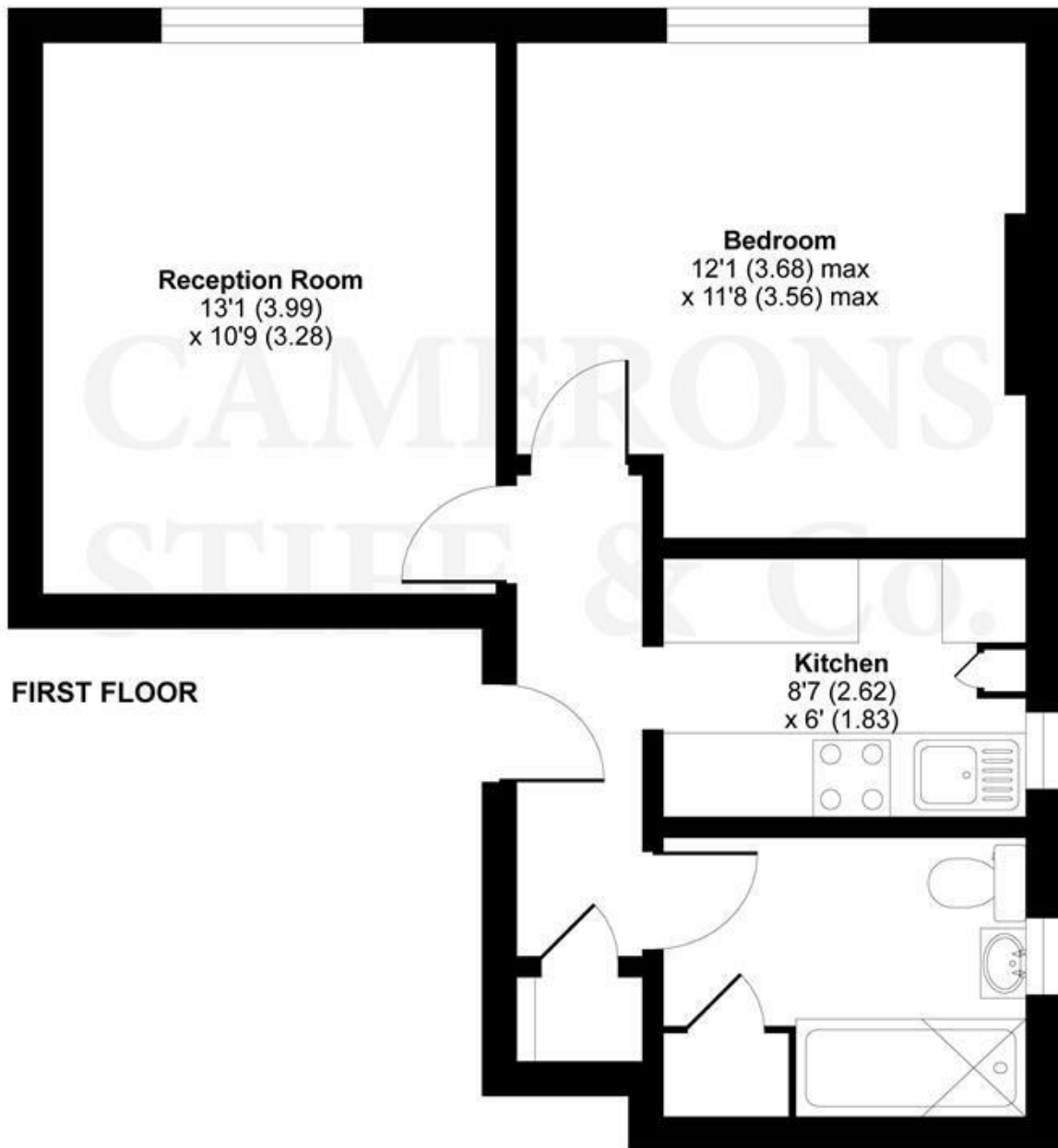




Willesden Lane, London, NW2

Approximate Area = 459 sq ft / 42.6 sq m

For identification only - Not to scale



EPC: C

Ref: 15391841



Floor plan produced in accordance with RICS Property Measurement Standards incorporating International Property Measurement Standards (IPMS2 Residential). © nichecom 2020. Produced for Camerons Stiff & Co. REF: 624204

