



## Hazelmere Road, NW6

To Let - £2,600 Per Month (Deposit: £3,000)

AVAILABLE FROM 30/06/2024 is this charming two-bedroom property split over two floors on Hazelmere Road in Queens Park.

Offering 537 sq ft of internal living space, this property boasts a reception/dining room perfect for entertaining guests and a separate kitchen with fitted appliances. On the second floor, you will find two double bedrooms and three-piece bathroom with a spa bath.

Located in the heart of London, this property is within close proximity to local amenities, shops and gyms, including excellent transport links from Queens Park (Overground - Zone 2), Kiburn (Jubilee - Zone 2) and Brondesbury Park (Overground - Zone 2) stations.

- AVAILABLE FROM 30/06/2024
- Two double bedrooms
- Seperate Kitchen with appliances
- Dining/Reception room
- Council - Brent (C) Deposit - £3,000

020 8450 9377

[rentals@cameronsstiff.co.uk](mailto:rentals@cameronsstiff.co.uk)

[cameronsstiff.co.uk](http://cameronsstiff.co.uk)


















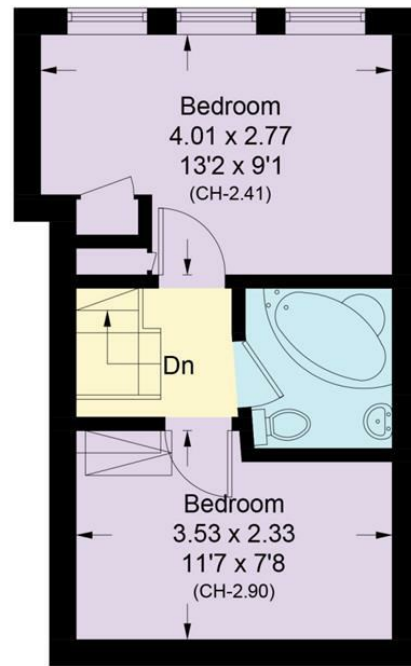
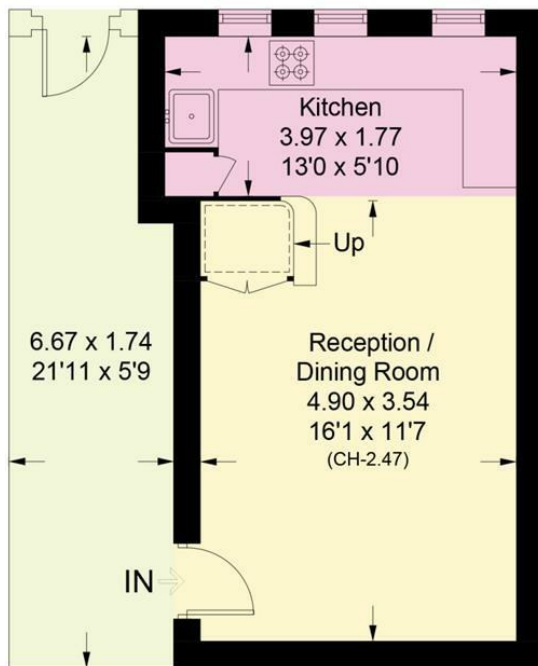


## Hazelmere Road, NW6

Approximate Area = 49.9 sq m / 537 sq ft  
Including Limited Use Area (0.9 sq m / 10 sq ft)



 = Reduce head height below 1.5m



Surveyed and drawn in accordance with the International property measurements standards (IPMS 2: Residential) Not drawn to scale unless stated. Whilst every care is taken in the preparation of this plan, please check all dimensions, shapes and compass bearings before making any decisions reliant upon them.

**EPC:**

Ref: 18881737

