



## Sidmouth Road, NW2

To Let - £3,000 Per Month (Deposit: £3,461)

AVAILABLE TO LET NOW - A delightfully furnished three-bedroom apartment situated on the second floor of this prestigious mansion block, covering an impressive 1375 sq ft of luxury accommodation.

This property offers three good-sized bedrooms, a spacious reception leading onto a dining area, a lift service & communal gardens. There are also two three-piece bathrooms, one of which is an en-suite.

Located in Brondesbury Park, this property is close to the fashionable Chamberlayne Road and Walm Lane offering a great array of local bars, delis and restaurants. Excellent transport links are available via Kensal Rise (Overground - Zone 2) & Willesden Green (Jubilee Line - Zone 2) stations.

- AVAILABLE TO LET NOW
- OFFERED UNFURNISHED
- Second floor flat
- Elevator service
- Communal garden
- Council - Brent (E) Deposit - £3,461

020 8450 9377

rentals@cameronsstiff.co.uk

cameronsstiff.co.uk

















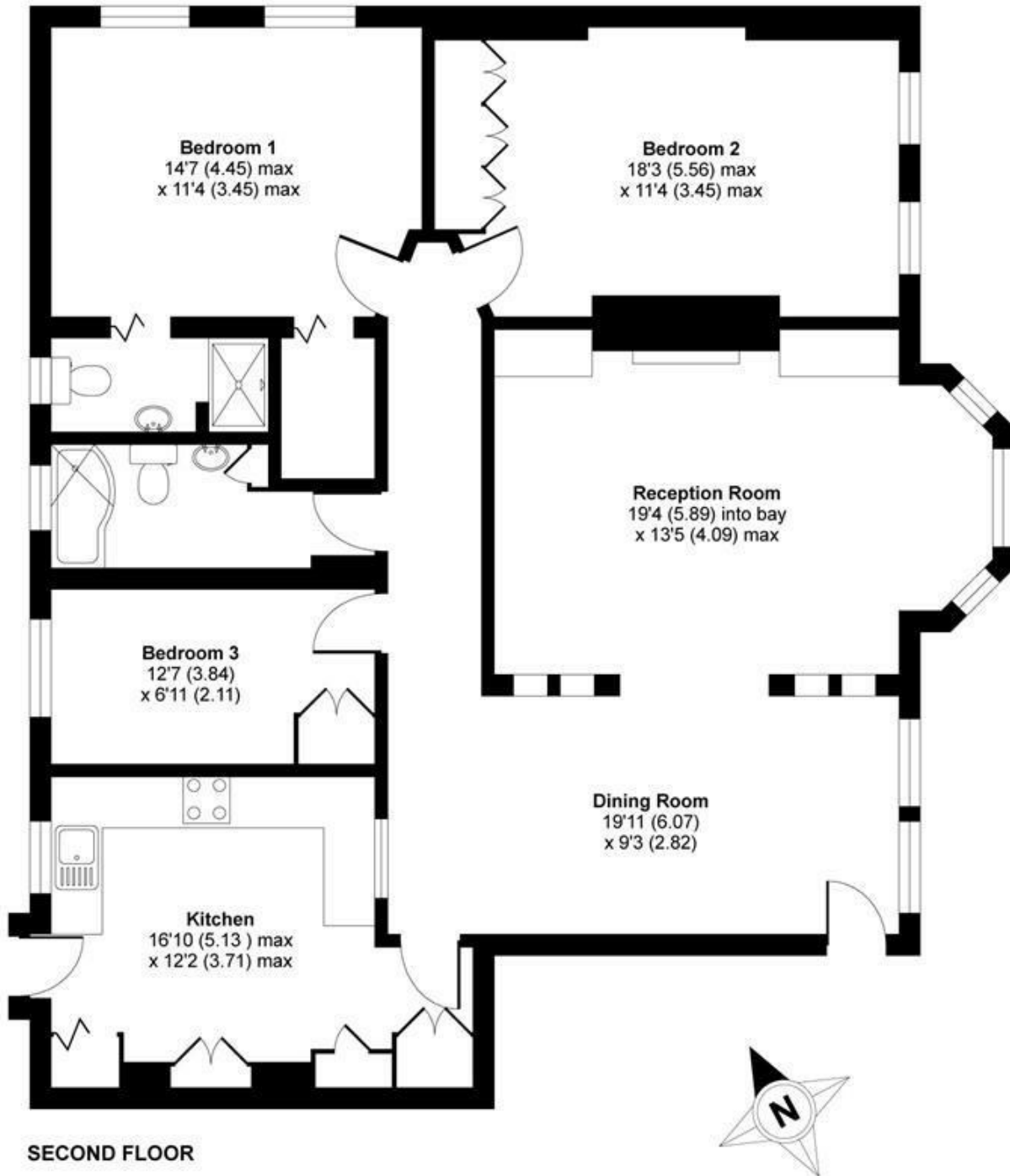




# CAMERONS STIFF & Co

## Sidmouth Road, London, NW2

APPROX. GROSS INTERNAL FLOOR AREA 1306 SQ FT 121.3 SQ METRES



EPC: D

Ref: 15061654

Whilst every attempt has been made to ensure the accuracy of the floor plan contained here, measurements of doors, windows and rooms are approximate and no responsibility is taken for any error, omission or misstatement. These plans are for representation purposes only as defined by RICS Code of Measuring Practice and should be used as such by any prospective purchaser. Specifically no guarantee is given on the total square footage of the property if quoted on this plan. Any figure given is for initial guidance only and should not be relied on as a basis of valuation.

Copyright nichecom.co.uk 2020 Produced for Camerons Stiff & Co REF : 567748

