



Mapesbury Road, NW2

To Let - £3,500 Per Month (Deposit: £4,038)

AVAILABLE TO LET FROM 31ST MAY 2024 - is this spacious two-bedroom maisonette situated on the Ground Floor of a charming detached property within the Mapesbury Conservation Area.

The apartment offers 1109 sq ft of vibrant living accommodation. It comprises a modern fitted kitchen and a generously sized reception room, giving you access to a 48ft west-facing rear garden. There is also a large double bedroom with fitted wardrobes & en-suite facilities followed by a second double bedroom and shower room. This flat further benefits from off-street parking.

Mapesbury Road is within a short walk of the amenities found on Walm Lane & Willesden High Road with a superb array of delis, bars & restaurants. Excellent transport links via Willesden Green (Jubilee - Zone 2) & Kilburn (Overground and Jubilee - Zone 2) stations for easy access into Central London.

Early viewing of this outstanding apartment on the Mapesbury Estate is highly recommended.

- AVAILABLE TO LET FROM 1ST MAY 2024
- Situated within the Mapesbury Conservation Area
- Private entrance & off-street parking
- Two Bedrooms, Two Bathrooms
- Private 48 ft west-facing rear garden
- Council - TBC Deposit - £4,038

020 8450 9377

rentals@cameronsstiff.co.uk

cameronsstiff.co.uk





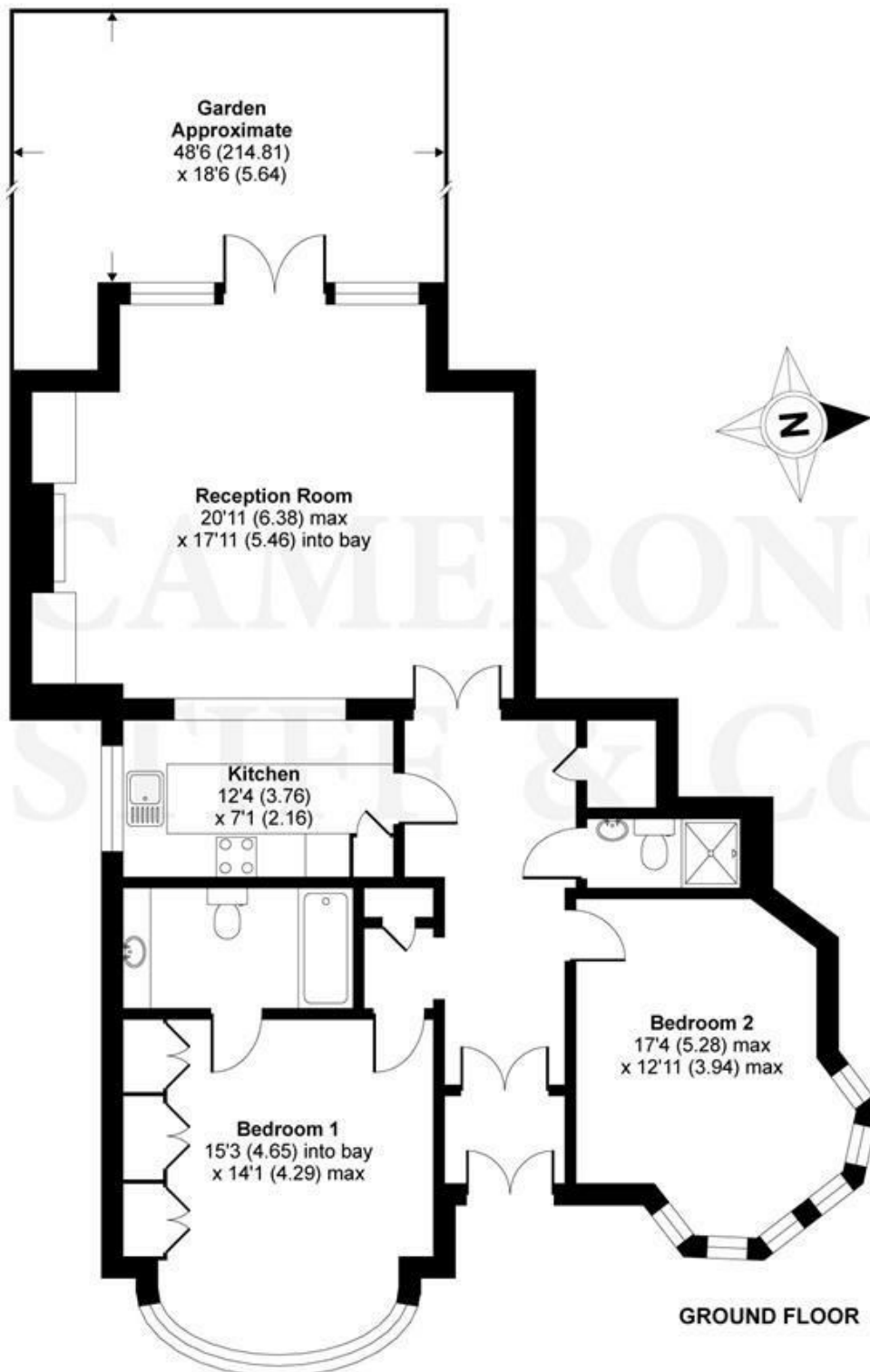






Mapesbury Road, London, NW2

APPROX. GROSS INTERNAL FLOOR AREA 1109 SQ FT 103 SQ METRES



Whilst every attempt has been made to ensure the accuracy of the floor plan contained here, measurements of doors, windows and rooms are approximate and no responsibility is taken for any error, omission or misstatement. These plans are for representation purposes only as defined by RICS Code of Measuring Practice and should be used as such by any prospective purchaser. Specifically no guarantee is given on the total square footage of the property if quoted on this plan. Any figure given is for initial guidance only and should not be relied on as a basis of valuation.

EPC: D

Ref: 15131331

Copyright nichecom.co.uk 2020 Produced for Camerons Stiff & Co REF : 574673

