



Oman Avenue, NW2

To Let - £2,700 Per Month (Deposit: £3,115)

AVAILABLE TO LET FROM 15TH JUNE 2023 within this beautifully designed Art Deco building is a three-bedroom flat situated moments from the stunning 86-acre Gladstone Park.

The building features large, bright Crittall-style windows ensuring light floods throughout this apartment. This large three-bedroom apartment offers a well-decorated living area, a separate fitted kitchen, and three generously sized bedrooms. Externally, there is a communal garden area and a beautiful entrance hallway.

Situated within walking distance from Dollis Hill (Jubilee Line- Zone 2) station, easy access to M1 and minutes away from 86-acres Gladstone Park with cafes, sports grounds, playgrounds and tennis Court.

Early viewing is highly recommended.

- AVAILABLE TO LET FROM 15TH JUNE 2024
- 926 sq ft of internal living space
- Three Bedrooms, One Bathroom
- Furnished with Communal Garden area
- Dollis Hill Station (Jubilee Line- Zone 2)
- Deposit: £3000/ Council Tax Band C

020 8450 9377

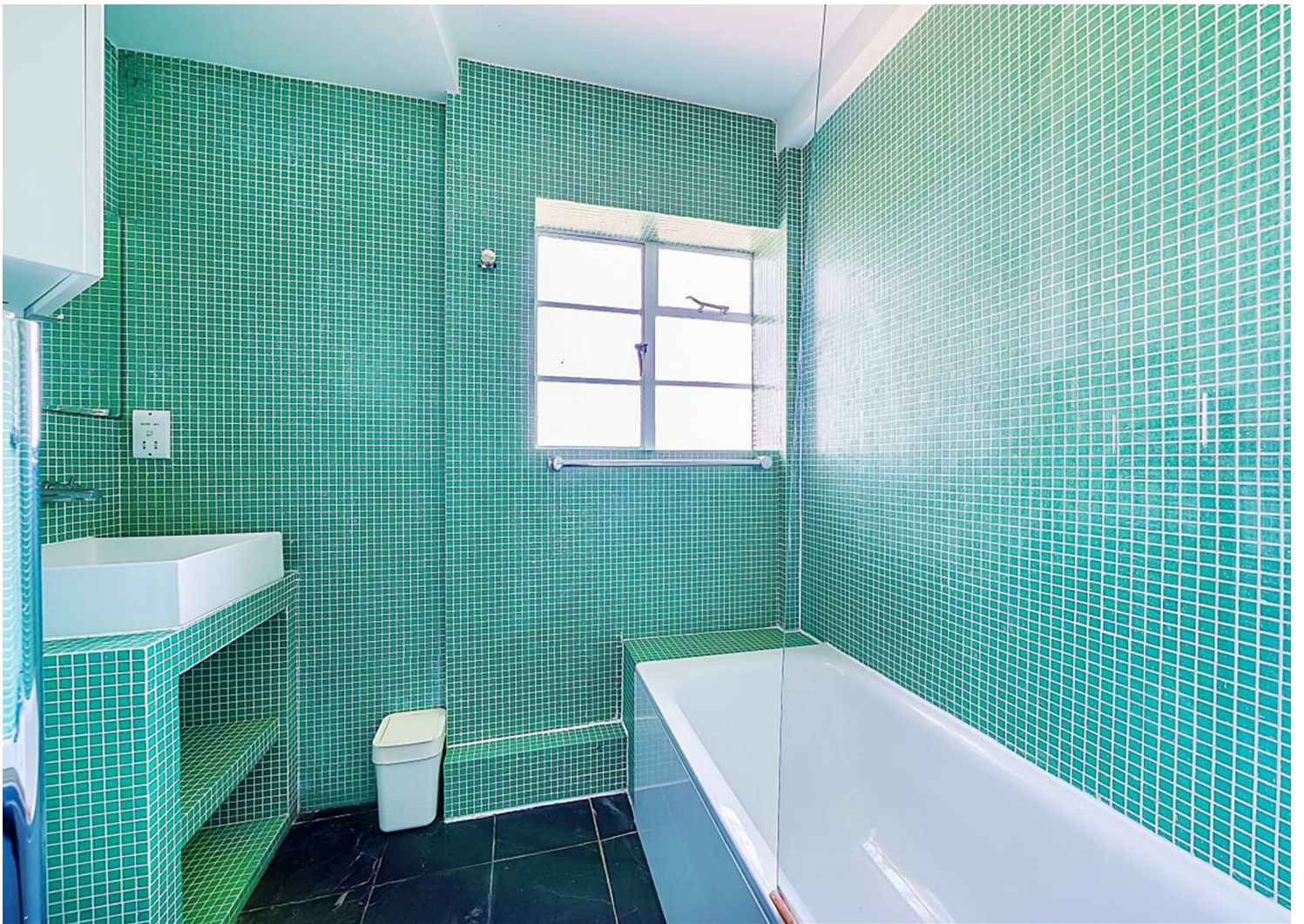
rentals@cameronsstiff.co.uk

cameronsstiff.co.uk











EPC: C

Ref: 17308547

