



## Kilburn High Road, NW6

To Let - £1,395 Per Month

AVAILABLE TO LET FROM 6TH AUGUST 2024 is this well-presented self-contained studio apartment in Kilburn High Road.

Located in a quiet cobbled mews, just off Kilburn High Road this modern First Floor studio flat that benefits from a bright open plan kitchen/reception room (with fitted appliances) and a modern 3 piece bathroom. The bed is uniquely fitted as a mezzanine above the reception which leaves plenty of living space.

Great location close to both Willesden Green and within walking distance of the buzz of Queen's Park along with many bars, restaurants, shops, gyms and transport links. Brondesbury (Overground) & Kilburn (Jubilee) stations are both within walking distance.



- AVAILABLE FROM 6TH AUGUST 2024
- Large moder 222 sq ft studio flat
- Cleverly designed with mezzanine bed
- Wooden flooring throughout
- White three piece bathroom suite
- Deposit: £1,609 - Council: Brent (A)

020 8450 9377

[rentals@cameronsstiff.co.uk](mailto:rentals@cameronsstiff.co.uk)

[cameronsstiff.co.uk](http://cameronsstiff.co.uk)



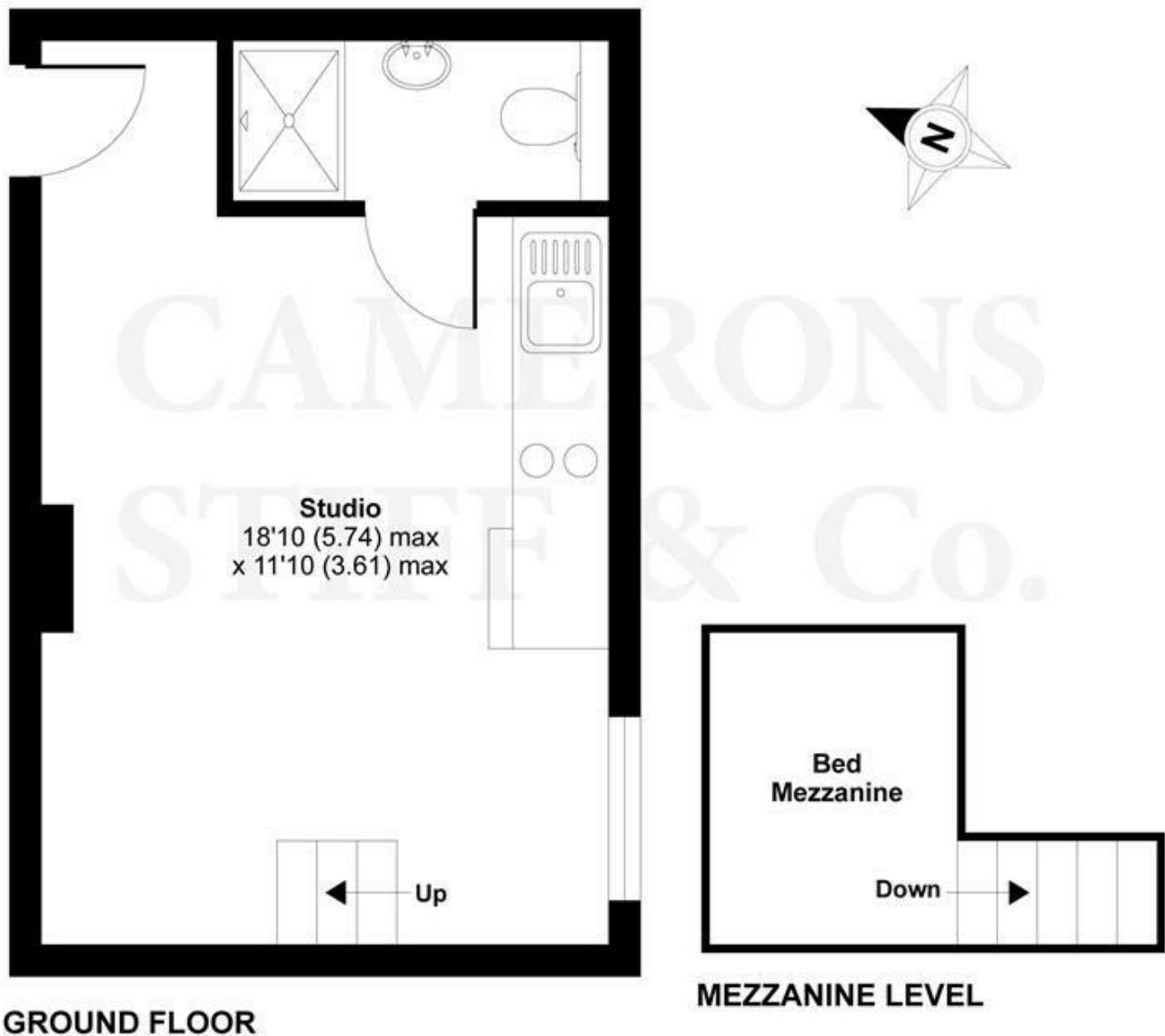




## Kilburn High Road, London, NW6

Approximate Area = 222 sq ft / 20.6 sq m (excludes mezzanine)

For identification only - Not to scale



EPC: D

Ref: 18516063



Floor plan produced in accordance with RICS Property Measurement Standards incorporating International Property Measurement Standards (IPMS2 Residential). © n'cheom 2021. Produced for Camerons Stiff & Co. REF: 698338

