



Ranelagh House, Elystan Place, SW3

Asking Price £1,575,000

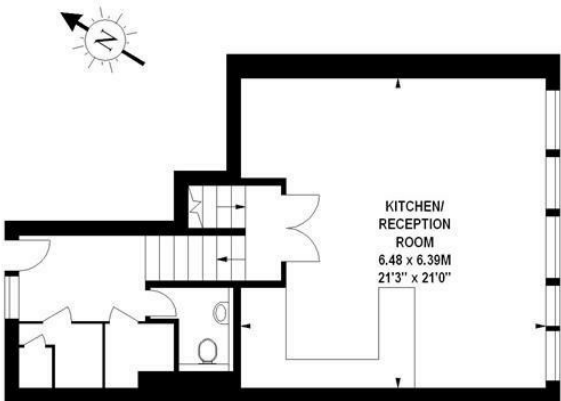
EPC: C

Gross Approx. Internal Area

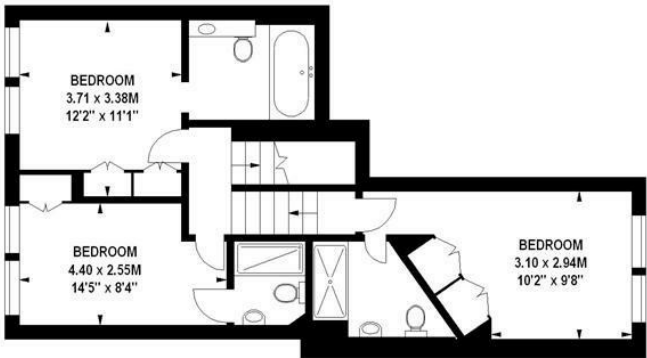
1251.00 sq ft

Ranelagh House, SW3

Approximate gross internal area
116.22 sq m / 1251 sq ft



Third Floor
618 sq ft



Second Floor
633 sq ft

The floor plan is not to scale and measurements and areas shown are approximate and therefore should be used for illustrative purposes only. The plan has been prepared in accordance with the RICS code of Measuring Practice and whilst we have confidence in the information produced, it must not be relied on. If there is any aspect of particular importance, you should carry out or commission your own inspection of the property.
Copyright of FeaturePRO.



£1,575,000
Leasehold

- Leasehold - approx. 142 Years remaining
- Service Charge - approx. £8,000 p.a.
- Reserve Fund Contribution - approx. £6,000 p.a.
- Ground Rent - Peppercorn
- EPC - Rating C
- Council Tax (RBKC) - Band G
- 25/26 - £2,615.77
- Live-In Building Manager
- Lift
- Sloane Square 500m



STANLEY
PROPERTY.LONDON