

STANLEY
PROPERTY.LONDON

020 7352 9556
stanleypropertylondon.co.uk



499 Kings Road, SW10

Asking Price £500,000

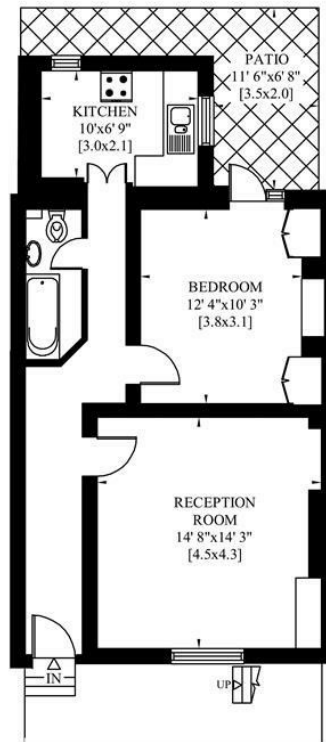
EPC: C

Gross Approx. Internal Area

617.00 sq ft

KINGS ROAD
LONDON SW10

Gross Internal Area: 57 Sq. metres
Excluding Vaults 617 Sq. feet





£500,000

Leasehold - Share of Freehold

- Tenure - Share of Freehold
- Lease - approx. 86 Years Remaining
- Service Charge ~ £1,200 P.A.
- Ground Rent - £200 P.A.
- EPC Rating - C
- Vacant Possession (No Chain)



STANLEY
PROPERTY.LONDON