

STANLEY
PROPERTY.LONDON

020 7352 9556
stanleychelsea.co.uk

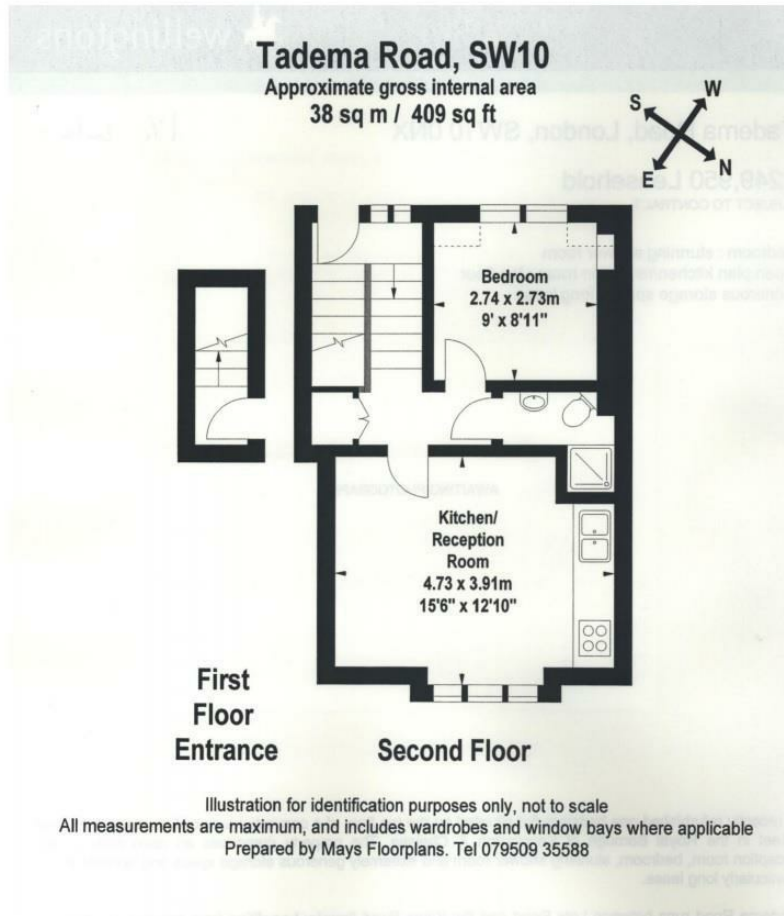


Tadema Road, SW10
Asking Price £400,000

EPC: D

Gross Approx. Internal Area

409.00 sq ft





£400,000
Leasehold

- Leasehold - approx. 88 Years Remaining
- EPC Rating: D
- Service Charge - Approx. £850 p.a.
- Ground Rent - £10 p.a (Fixed)
- Council Tax (RBKC) - Band C



STANLEY

PROPERTY.LONDON