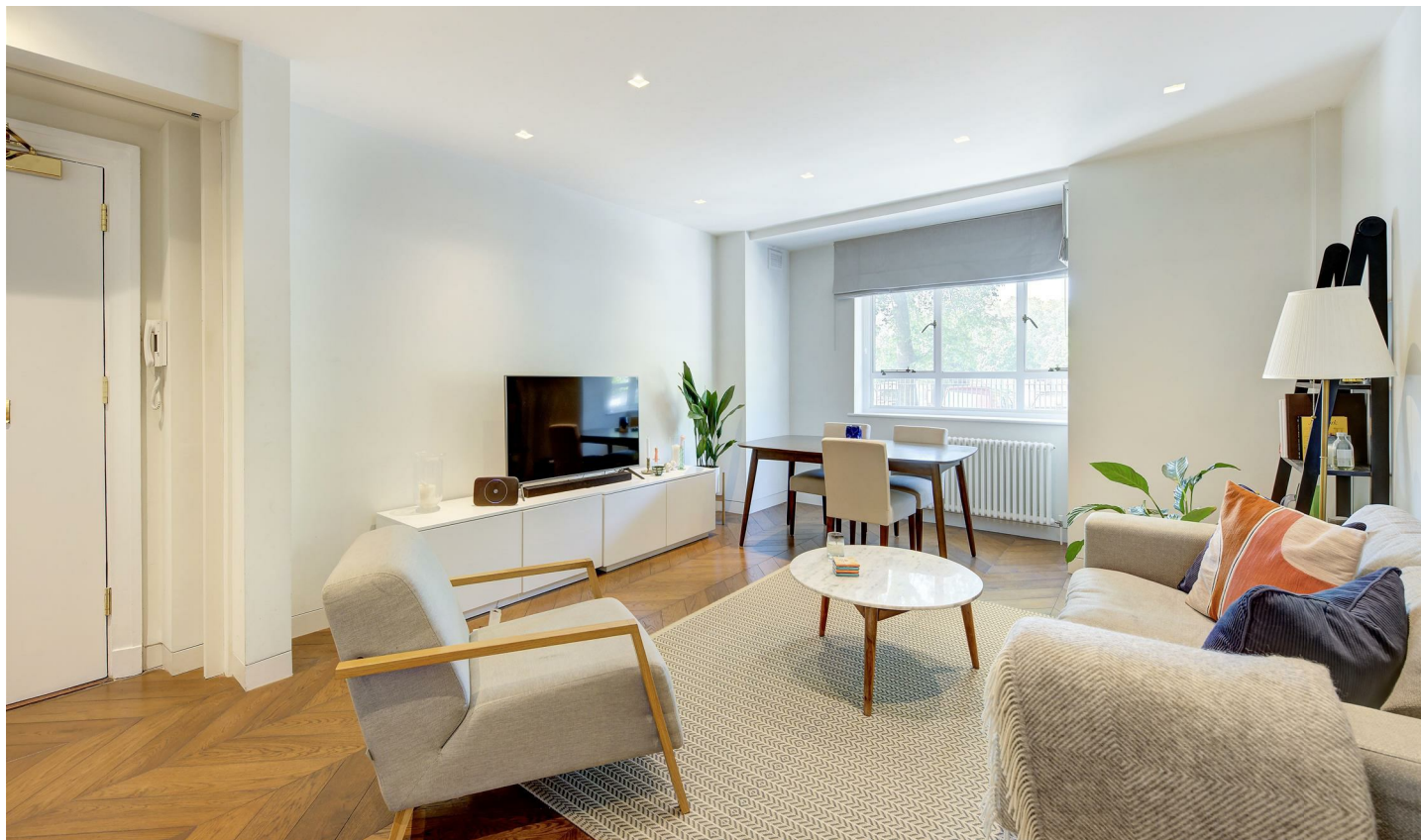


STANLEY
PROPERTY.LONDON

020 7352 9556
stanleypropertylondon.co.uk



Franklins Row, SW3

Asking Price £1,300,000

EPC: D

Gross Approx. Internal Area

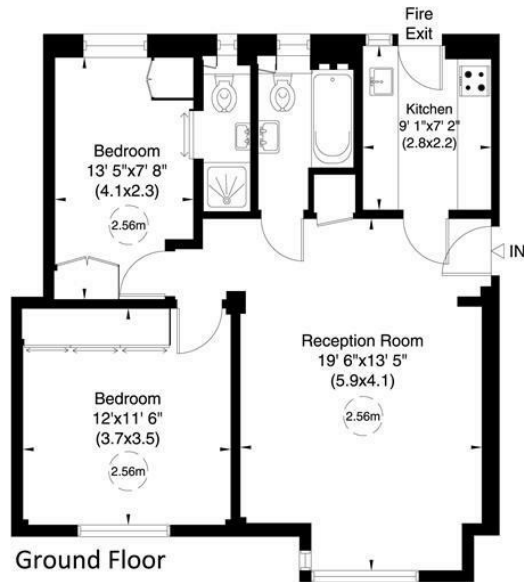
668.00 sq ft

Burton Court, SW3

Approximate Gross Internal Area

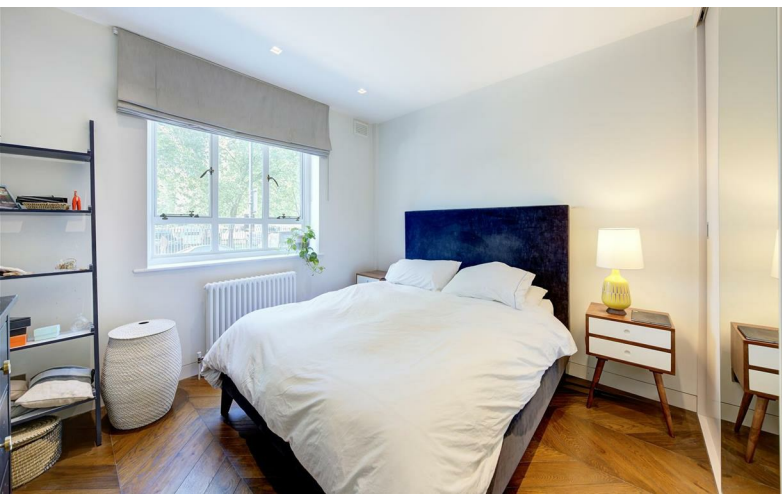
62 sq m/ 668 sq ft

Not to Scale, for identification only



For guidance only and must not be relied upon as a statement of fact.
All measurements and areas are approximate only (and have been prepared in accordance
with the current edition of the RICS Code of Measuring Practice).





£1,300,000

Leasehold - Share of Freehold

- Share of Freehold
- Lease - 976 Years Remaining
- Ground Rent - Peppercorn
- Service Charge ~ £8,080 p.a. *
- * Includes Heating & Hot Water
- Reserve Fund ~ £5,500 p.a.
- EPC Rating - D
- Council Tax Band G 2024/25 £2,514.97



STANLEY
PROPERTY.LONDON