



JCP

ESTATE AGENTS
OXFORD

Walton Street, Oxford, OX2 6EB

Guide Price £1,100,000

The inviting entrance hall leads into a welcoming open plan kitchen/dining room leading into a stylish family room with wood burning stove and French doors onto the garden. To the front of the house is a private sitting room. On the first floor there is a principal bedroom with ensuite shower room and a second bedroom with guest bathroom. On the lower ground floor there is a self contained annexe with independent access and internal access to the house, comprising kitchen/living room with bedroom and ensuite shower room. Outside to the front there is a pretty garden and to the rear is a delightful enclosed secluded garden with timber out building offering potential STPP. There is also a gated pedestrian access with vehicular parking space. The area also operates a residents parking scheme.

The property is well situated in Walton Manor on the very edge of the fashionable and vibrant Jericho within walking distance of the beautiful Port Meadow and offers easy access to day to day shopping facilities including restaurants, bars, pubs, supermarkets and a cinema along with the Radcliffe Quarter, Blavatnik School of Government, Schwarzman Centre for the Humanities and Oxford University Press. The more comprehensive facilities of the city centre are within level walking/cycling distance, including the impressive Westgate shopping centre and the constituent colleges and departments of The University of Oxford. There are rail services to London Paddington in approximately one hour from Oxford mainline station and London Marylebone from Oxford Parkway. There is also a coach station at Gloucester Green where there are frequent buses to London Victoria, Heathrow, Gatwick and Stansted airports.

Fashionable & Vibrant Central Location | Enchanting, Versatile & Surprisingly Spacious Period Home | Charming Open Plan Kitchen/Dining Room & Family Room onto Garden | Private Sitting Room | Two Double Bedrooms, Bathroom & Ensuite Shower Room | Annexe with Independent & Internal Access with Third Double Bedroom | Delightful Enclosed Garden with Private Parking Space | Out Building with Potential STPP | No Onward Chain |

TENURE & POSSESSION
The Property is Freehold



LOCATION

DIRECTIONS

From the Central North Oxford Office of JCP Estate Agents, proceed north along Walton Street and the property will be found on the right hand side shortly after the turning to Adelaide Street.

LOCAL AUTHORITY

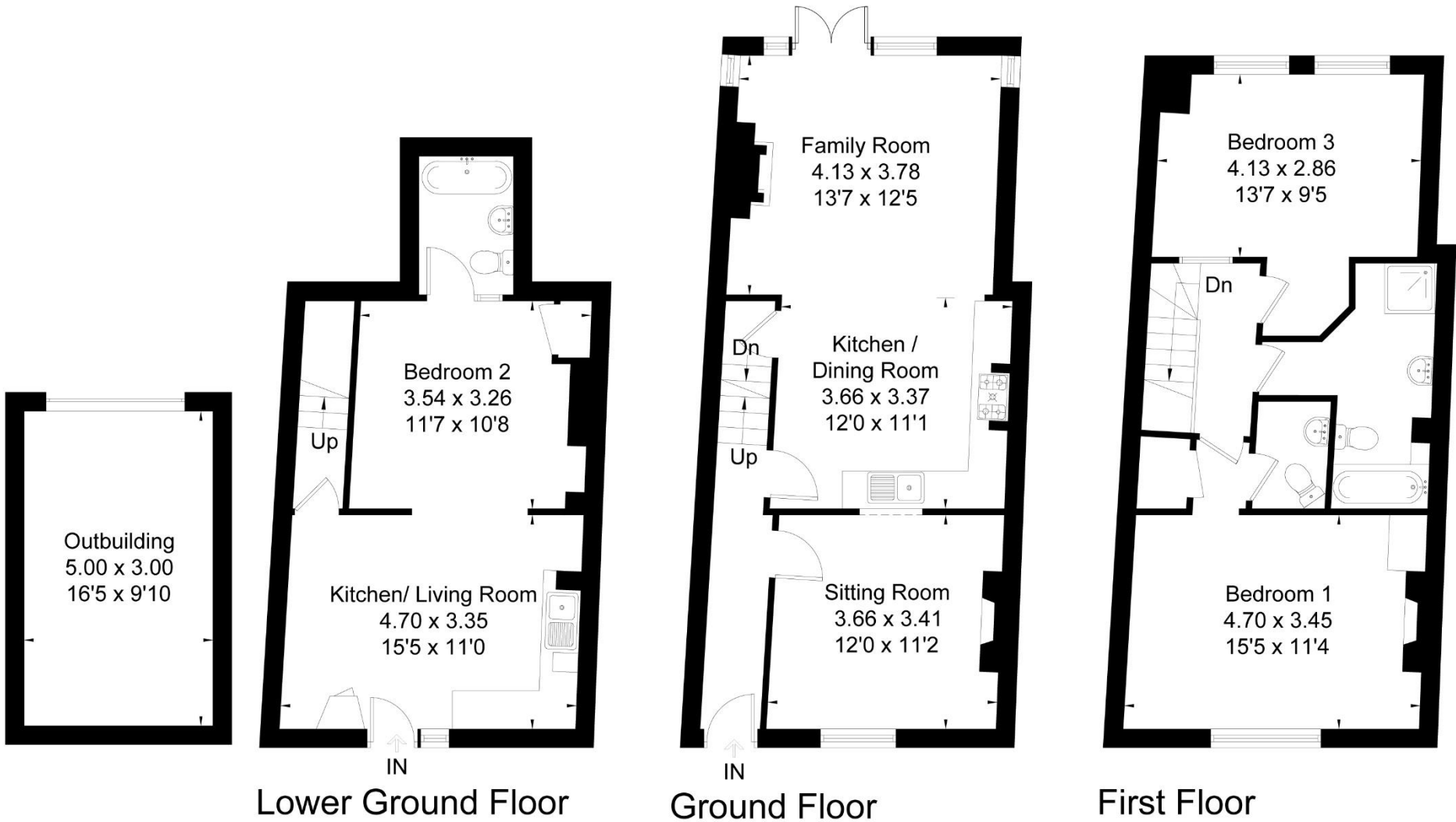
Council Tax Band E

Oxford City Council

Telephone: 01865 249811



Approximate Floor Area = 129.5 sq m / 1394 sq ft
Outbuilding = 15.0 sq m / 161 sq ft
Total = 144.5 sq m / 1555 sq ft



Drawn for illustration and identification purposes only by @fourwalls-group.com #74376



James C. Penny Estate Agents
Sales | Lettings | Acquisitions | Management

Central North Oxford
113 Walton Street, Oxford, OX2 6AJ
Tel: 01865 55 44 22
Email: northoxford@jcpestateagents.co.uk

East Oxford
251 Cowley Road, Oxford, OX4 1XG
Tel: 01865 72 11 22
Email: eastoxford@jcpestateagents.co.uk

IMPORTANT NOTICE
James C. Penny Estate Agents and their clients give notice to anyone reading these particulars that: 1) These particulars do not constitute part of any offer or contract. 2) All text, photographs, dimensions, plans and references to the condition and necessary permissions for use and occupation, and any other details regarding the property are guidelines only and are not necessarily comprehensive, and as such are given without responsibility and any intending purchasers should not rely on them as statement or fact. 3) Any reference to alterations to, or use of, any part of the property does not mean that all necessary planning, building regulations or other consents have been obtained by James C. Penny Estate Agents or their clients. 4) James C. Penny Estate Agents have not tested any services, equipment or facilities at the property. Any intending purchasers must satisfy these service by inspection or otherwise. 5) No person in the employment of James C. Penny Estate Agents has any authority to make or give any representation or warranty whatsoever in relation to the property.

