



Central Oxford

A rare opportunity to rent a four bedroom house located in Oxford City Centre.

Price £1,950 pcm

DESCRIPTION & SITUATION

A fantastic opportunity to rent in the heart of Oxford City Centre. The property's accommodation includes; three/four double bedrooms, kitchen/breakfast room, family bathroom, plenty of storage and rear garden. The property also benefits with a garage and off street parking. The property has all that Oxford offers on its doorstep as well as having ease of access to Oxford's coach and railway stations.

The property is comes part-furnished.

Council Tax: Band C

AVAILABLE SEPTEMBER 2013.

DIRECTIONS

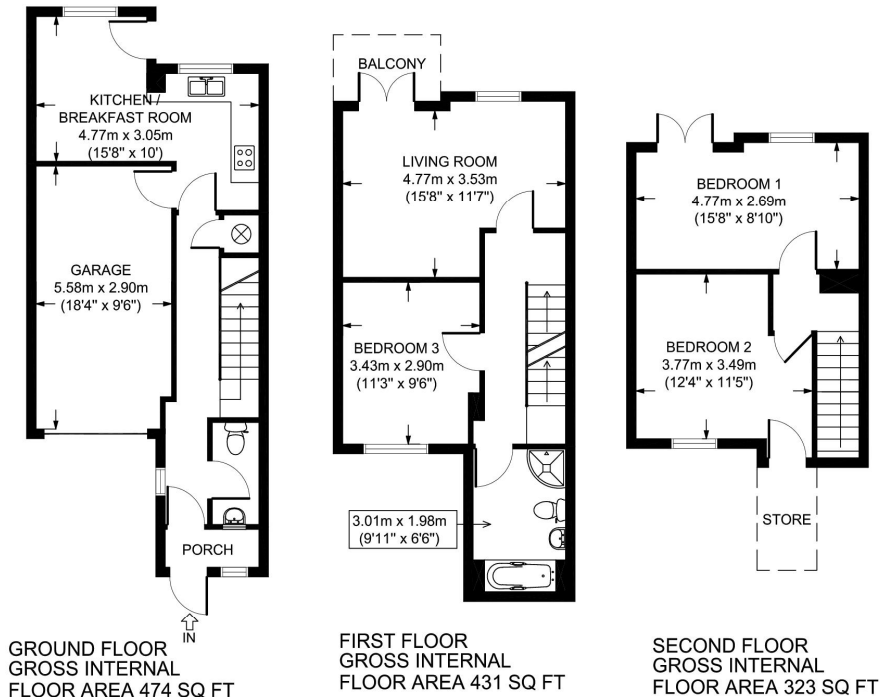
From the office of JCP Estate Agents proceed south along Walton Street, at the traffic lights turn right onto Worcester Street and continue on to Hythe Bridge Street. At the next set of traffic lights turn left onto Hollybush row continue on this street through the next set of traffic lights. On the first left turn down St Thomas Street follow this street before the bridge turn right down Paradise Street. Paradise Square is the second right turning, the property can be found on the right side.

TENURE & POSSESSION

The property is To Let

Energy Efficiency Rating		Current	Potential
Very energy efficient - lower running costs			
(92-100) A			84
(81-91) B			
(69-80) C			
(55-68) D		66	
(39-54) E			
(21-38) F			
(1-20) G			
Not energy efficient - higher running costs			
England & Wales		EU Directive 2002/91/EC	

Environmental Impact (CO ₂) Rating		Current	Potential
Very environmentally friendly - lower CO ₂ emissions			
(92-100) A			84
(81-91) B			
(69-80) C			
(55-68) D		64	
(39-54) E			
(21-38) F			
(1-20) G			
Not environmentally friendly - higher CO ₂ emissions			
England & Wales		EU Directive 2002/91/EC	



All measurements of walls, doors, windows, fittings and appliances, including their size and location, are shown as standard sizes and therefore cannot be regarded as a representation by the seller.



113 Walton Street
Oxford
Oxfordshire
OX2 6AJ

www.jcpestateagents.co.uk

tel: 01865 554422
fax: 01865 552522