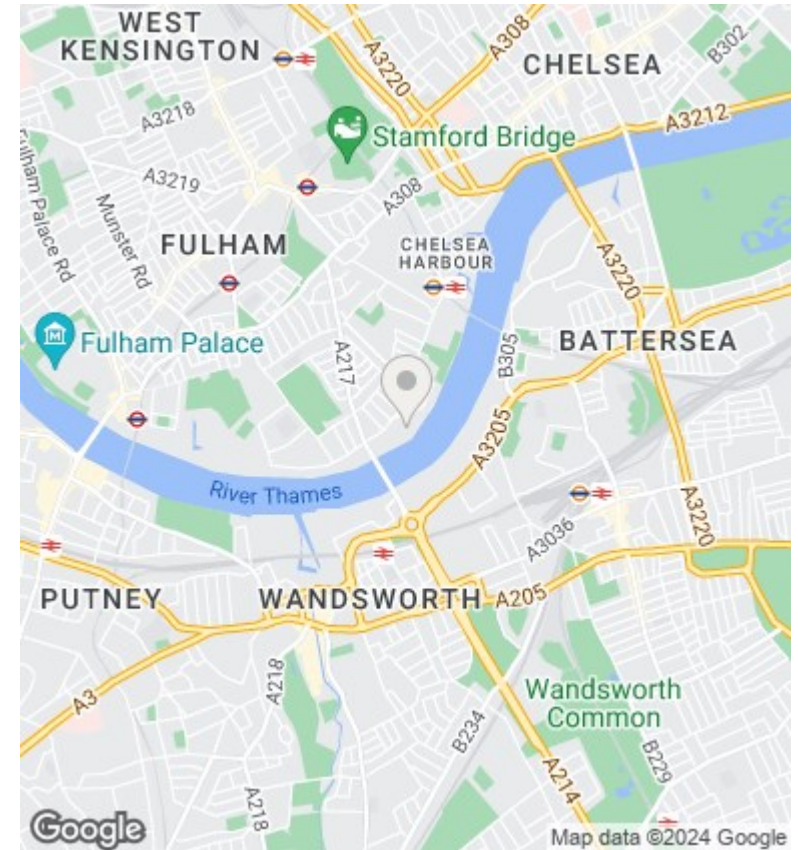
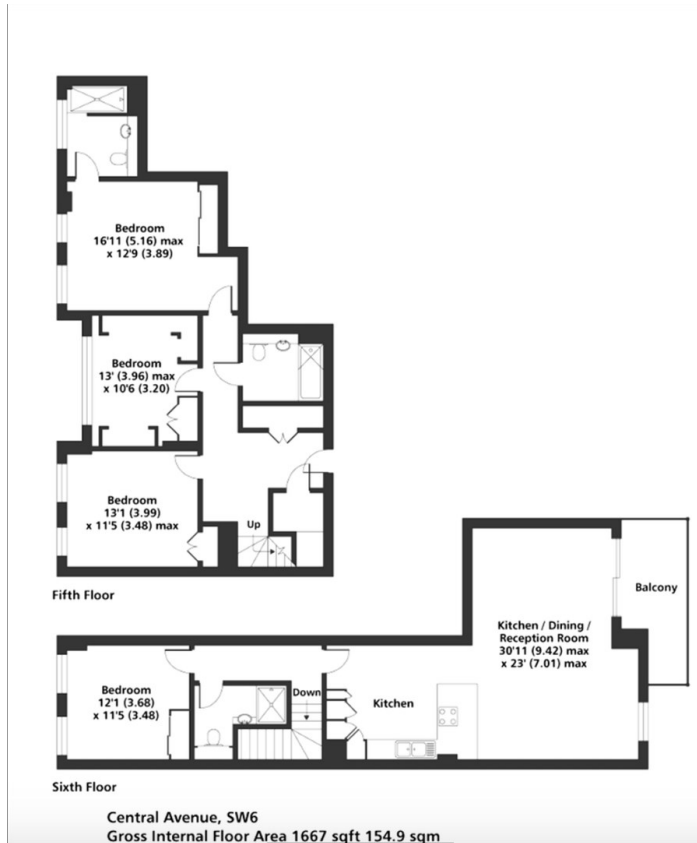




Ravensbourne Apartments, Fulham Riverside, 5 Central Avenue, SW6 2GN

£6,370 Per Month

- Available 24th June
- Four double bedrooms
- On-site fitness center
- Vibrant local amenities
- Spacious open-plan layout
- Modern en-suite bathrooms
- Communal landscaped garden
- Private balcony views
- 24/7 concierge service
- Close to transport



Viewings

Viewings by arrangement only.
Call 02077225022 to make an appointment.

Council Tax Band

H

EPC Rating:

B

Energy Efficiency Rating		Current	Potential
<i>Very energy efficient - lower running costs</i>			
(92 plus)	A		
(81-91)	B	84	84
(69-80)	C		
(55-68)	D		
(39-54)	E		
(21-38)	F		
(1-20)	G		
<i>Not energy efficient - higher running costs</i>			
England & Wales		EU Directive 2002/91/EC	