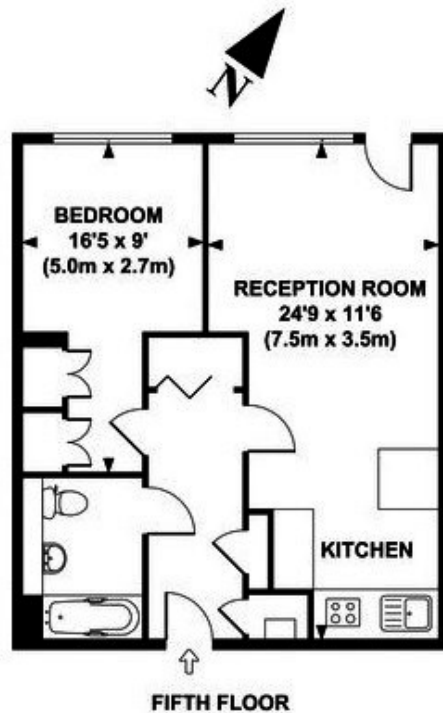




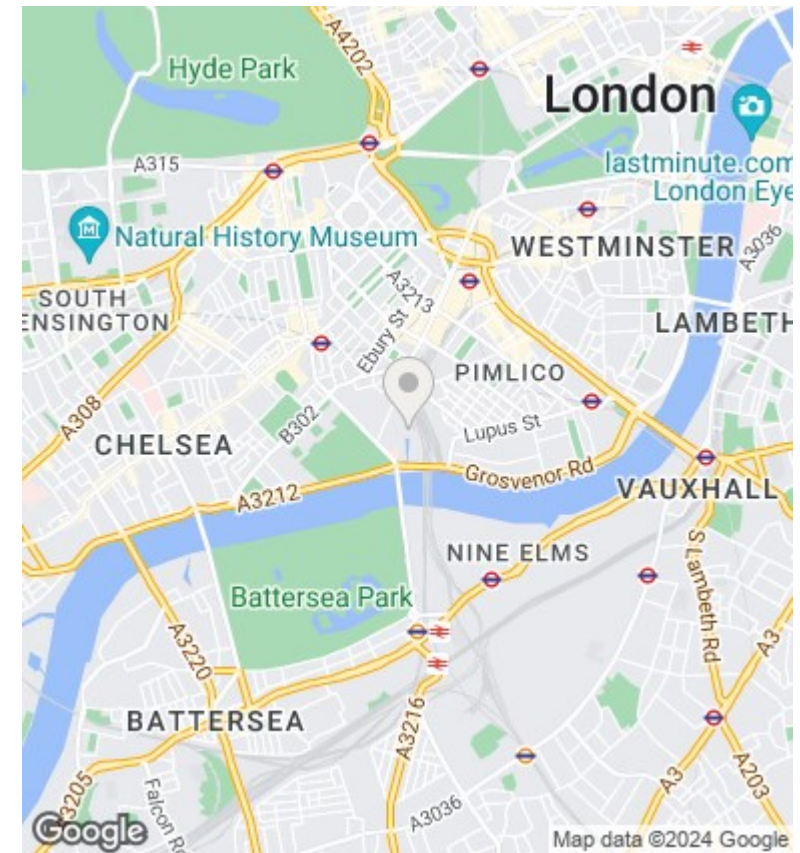
Caro Point, Gatliff Road, Grosvenor Waterside SW1W 8BD

£750,000

- 24/7 concierge
- walking distance to Sloane Square and Victoria stations
- on site Sainsbury's
- under floor heating
- moments away from Battersea Park
- on site restaurant
- gym and spa
- laundry service



APPROX. GROSS INTERNAL FLOOR AREA 511 SQ FT / 48 SQ M



Viewings

Viewings by arrangement only.
Call 02077225022 to make an appointment.

Council Tax Band

F

EPC Rating:

B

Energy Efficiency Rating		Current	Potential
<i>Very energy efficient - lower running costs</i>			
(92 plus) A			
(81-91) B		81	83
(69-80) C			
(55-68) D			
(39-54) E			
(21-38) F			
(1-20) G			
<i>Not energy efficient - higher running costs</i>			
England & Wales		EU Directive 2002/91/EC	