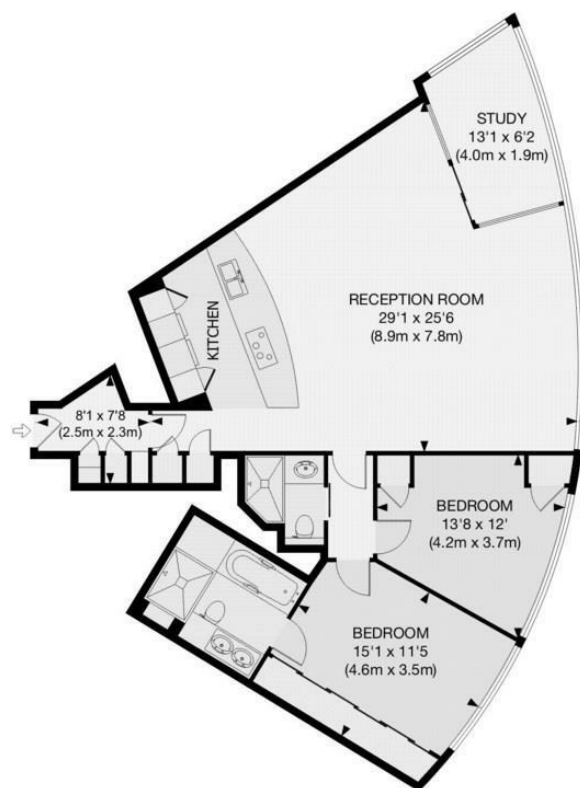




The Tower, St George Wharf, Vauxhall SW8 2DU

£5,500 Per Month

- 24/7 concierge
- cinema
- under floor heating and air cooling
- home smart home system
- gym and spa
- business lounge
- parking space
- swimming pool overlooking River
- dining room / meeting room
- direct River Views



APPROX. GROSS INTERNAL FLOOR AREA 1075 SQ FT / 100 SQ M

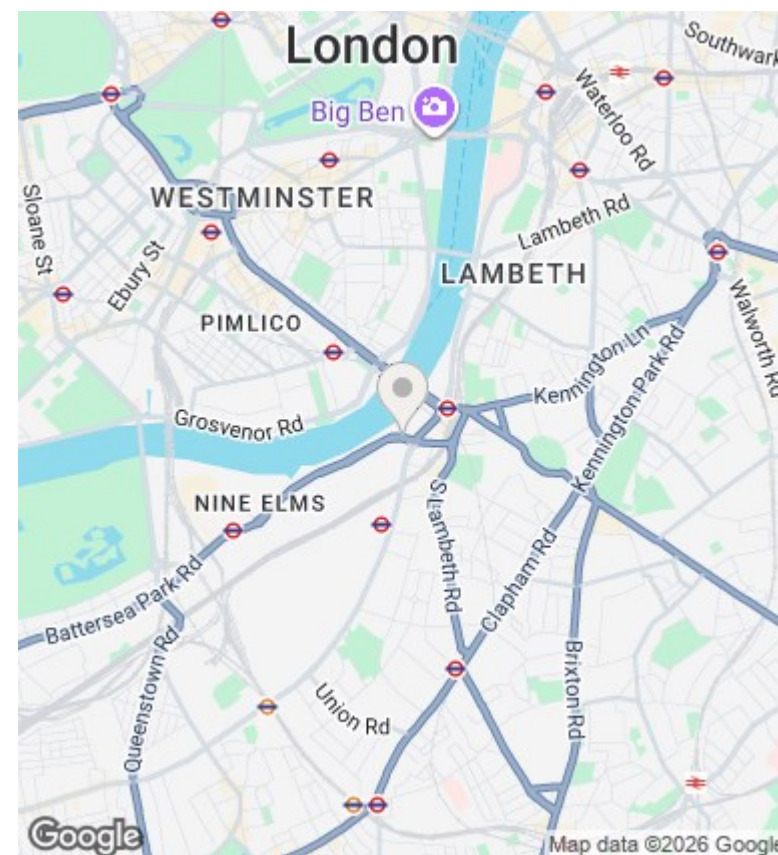
Viewings

Viewings by arrangement only.
Call 02077225022 to make an appointment.

Council Tax Band

G

EPC Rating:



Energy Efficiency Rating		
	Current	Potential
Very energy efficient - lower running costs		
(92 plus) A		
(81-91) B		
(69-80) C		
(55-68) D		
(39-54) E		
(21-38) F		
(1-20) G		
Not energy efficient - higher running costs		
England & Wales	EU Directive 2002/91/EC	