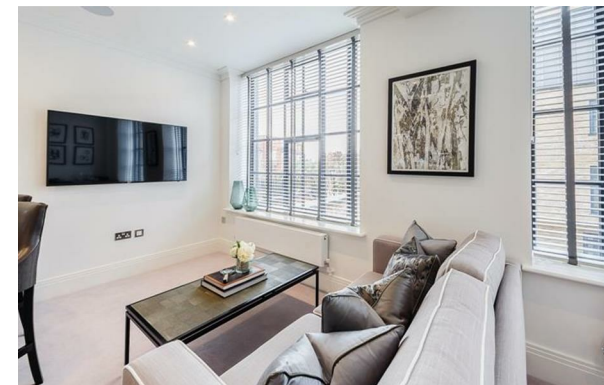




CHASE APARTMENTS  
LONDON



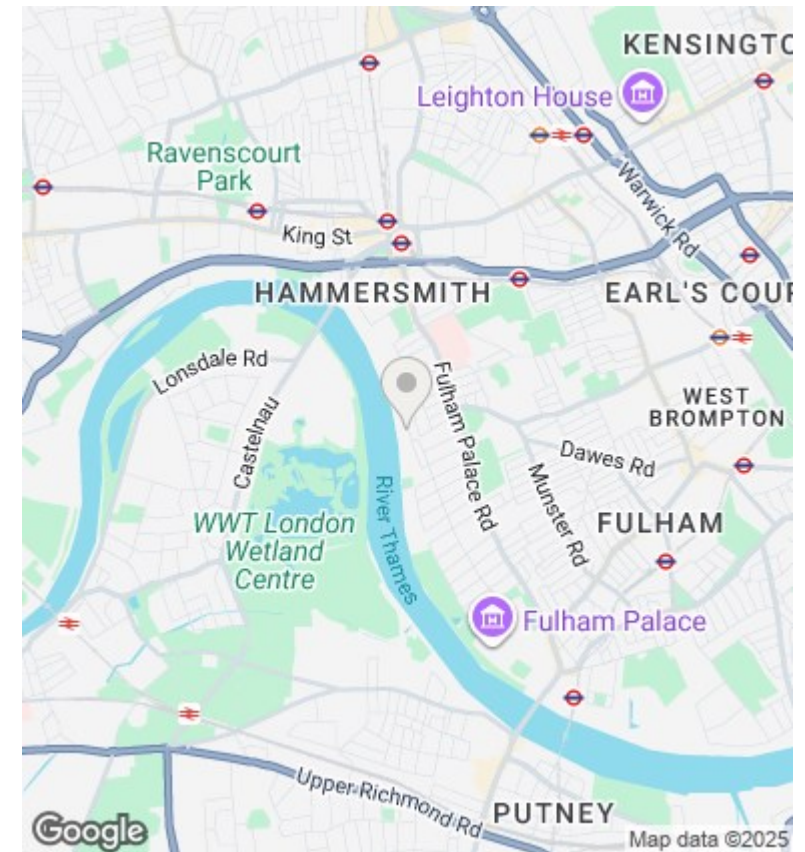
Rainville Road, London W6 9UF

£960 Per Week

- New build gated development | Riverside location
- Warehouse conversion | Interior designed
- On-site building manager | Secure parking available
- CCTV | Key phone entry system
- 24-hour emergency & maintenance service | Available furnished or unfurnished

Grosvenor Waterside, 32 Gatliff Road, Belgravia, London, SW1W 8QN  
02077225022

<http://www.chaseapartments.com/>



## Viewings

Viewings by arrangement only.  
Call 02077225022 to make an appointment.

## Council Tax Band

F

## EPC Rating:

E

Energy Efficiency Rating		
	Current	Potential
Very energy efficient - lower running costs		
(92 plus) <b>A</b>		
(81-91) <b>B</b>		
(69-80) <b>C</b>		
(55-68) <b>D</b>		
(39-54) <b>E</b>	54	54
(21-38) <b>F</b>		
(1-20) <b>G</b>		
Not energy efficient - higher running costs		
England & Wales		EU Directive 2002/91/EC