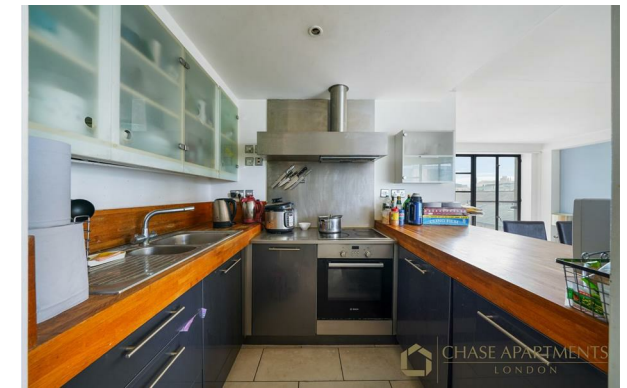




CHASE APARTMENTS  
LONDON



## Ice Wharf, Kings Cross, N1 N1 9RW

£3,000 PCM

- Two bedrooms, two bathrooms
- Concierge services
- 758 sq. ft.
- Bars & restaurants nearby
- Private gated development
- Large reception room
- Garden space
- 24/7 security
- Unbeatable location
- Walking distance to King's Cross

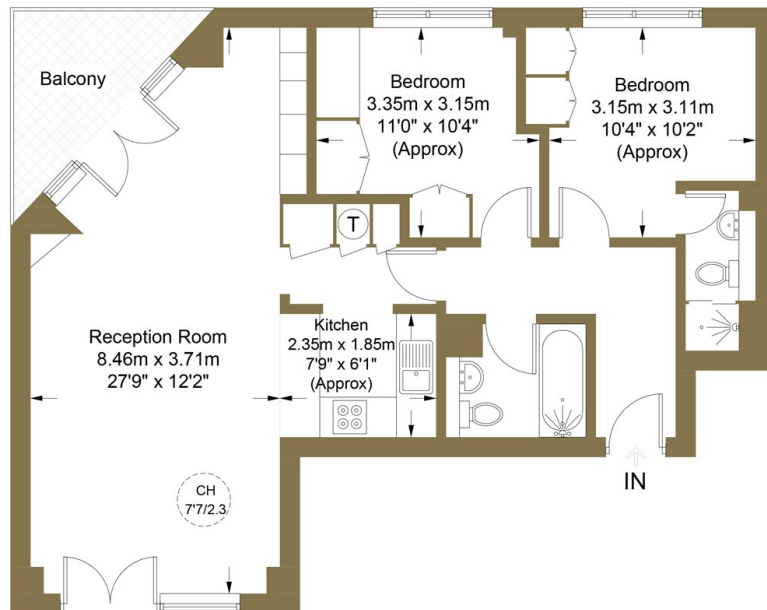
Grosvenor Waterside, 32 Gatliff Road, Belgravia, London, SW1W 8QN  
02077225022

<http://www.chaseapartments.com/>



## Ice Wharf, N1

Approximate Gross Internal Area = 70.4 sq m / 758 sq ft



### Third Floor



This plan is for layout guidance only. Not drawn to scale unless stated. Windows and door openings are approximate. Whilst every care is taken in the preparation of this plan, please check all dimensions, shapes and compass bearings before making any decisions reliant upon them. (ID889850)



CHASE APARTMENTS  
LONDON

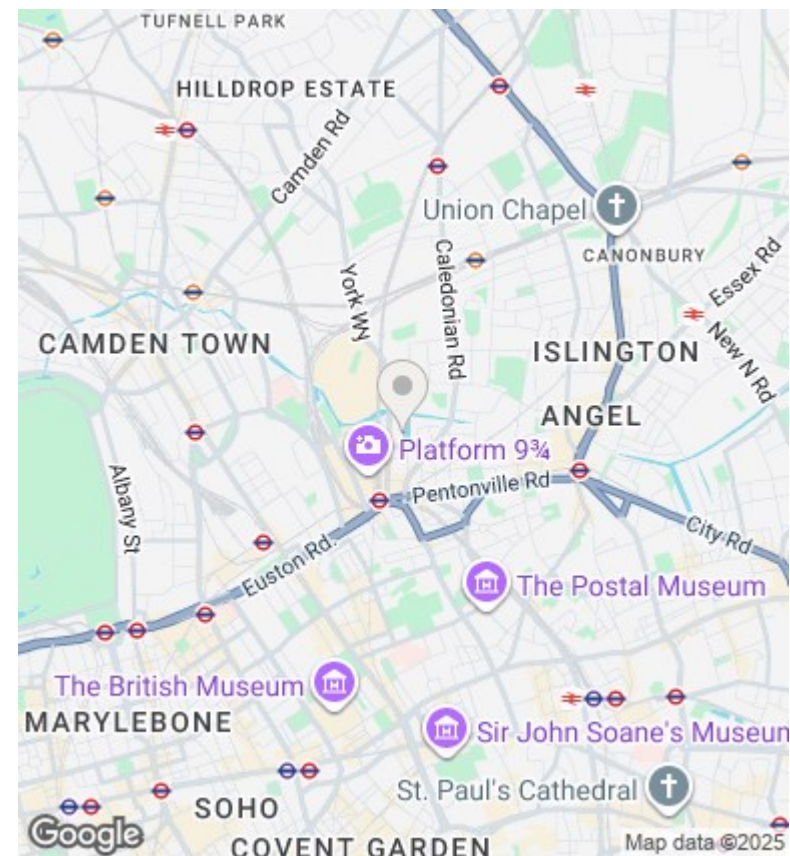
## Viewings

Viewings by arrangement only.  
Call 02077225022 to make an appointment.

## Council Tax Band

E

## EPC Rating:



### Energy Efficiency Rating

	Current	Potential
Very energy efficient - lower running costs		
(92-plus) <b>A</b>		
(81-91) <b>B</b>		
(69-80) <b>C</b>		
(55-68) <b>D</b>		
(39-54) <b>E</b>		
(21-38) <b>F</b>		
(1-20) <b>G</b>		
Not energy efficient - higher running costs		
England & Wales		EU Directive 2002/91/EC