



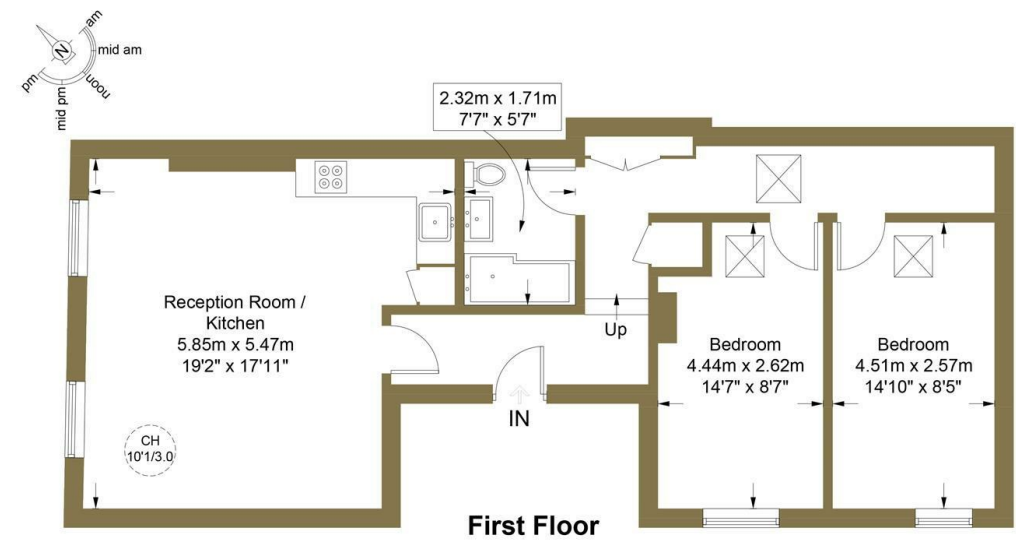
Russell Gardens, London W14 8EZ

£725 Per Week

- Newly refurbished
- Large 2 bedroom flat
- Excellent location
- Unfurnished
- Walking distance to Holland Park
- Westfield shopping centre nearby

Russell Gardens, W14

Approximate Gross Internal Area = 773 sq ft / 71.8 sq m



CHASE APARTMENTS
LONDON

This plan is for layout guidance only and is not drawn to scale unless stated. All dimensions, including windows, doors, and the Total Gross Internal Area (GIA), are approximate. For precise measurements, please consult a qualified architect or surveyor before making any decisions based on this plan.



Certified
Property
Measurer

Viewings

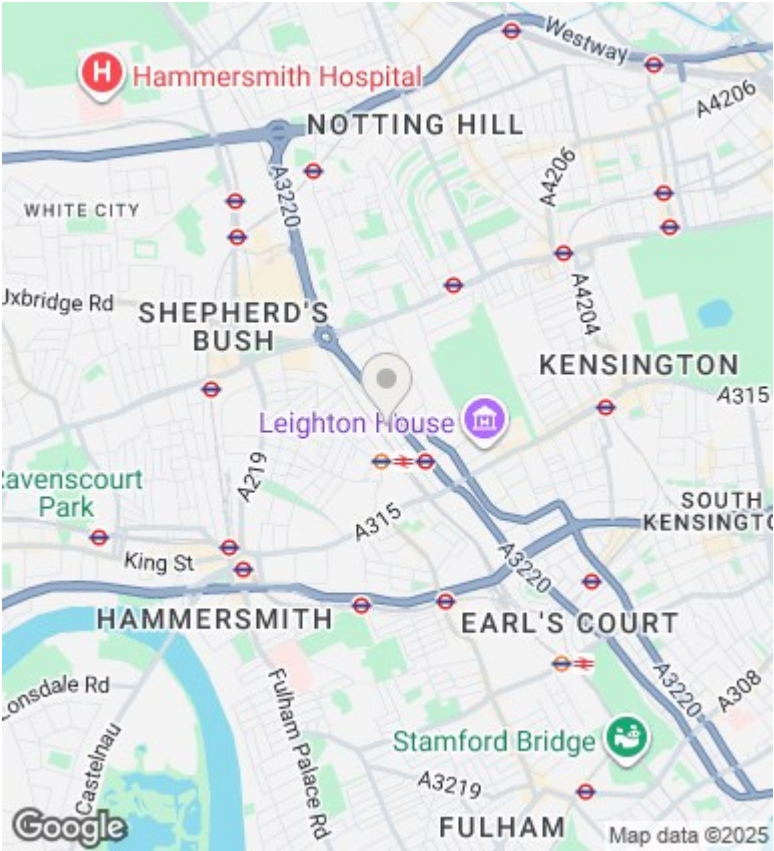
Viewings by arrangement only.
Call 02077225022 to make an appointment.

Council Tax Band

H

EPC Rating:

D



Energy Efficiency Rating		
	Current	Potential
Very energy efficient - lower running costs		
(92 plus) A		
(81-91) B		
(69-80) C		
(55-68) D		
(39-54) E	56	
(21-38) F		
(1-20) G		
Not energy efficient - higher running costs		
England & Wales		EU Directive 2002/91/EC