



CHASE APARTMENTS  
LONDON



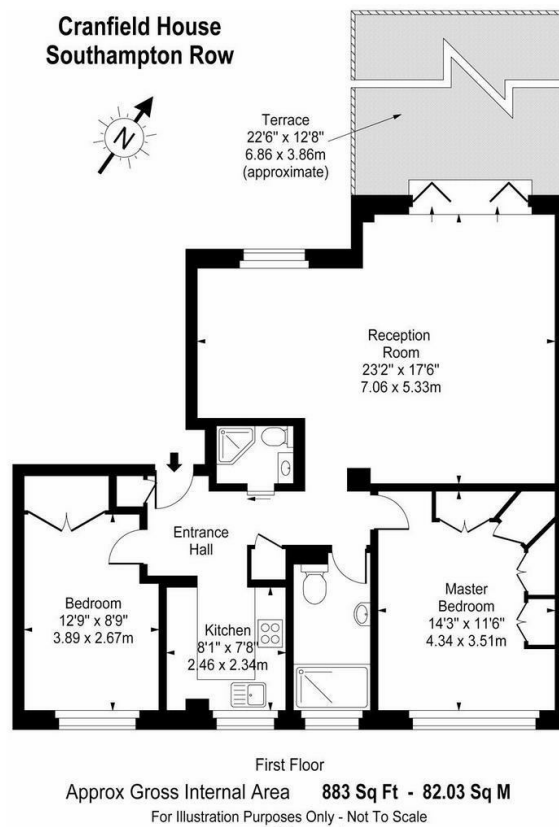
## Cranfield House, 97-107 Southampton Row, London WC1B 4HH

£3,900 Per Month

- Walking distance to UCL
- Walking distance to Russell Square station
- Separate Kitchen
- Available in September
- Secure portered block mansion
- Fully Furnished
- Located on the 1st floor
- Large Terrace
- Lift
- Approx 80 sq meters

Grosvenor Waterside, 32 Gatliff Road, Belgravia, London, SW1W 8QN  
02077225022

<http://www.chaseapartments.com/>



## Viewings

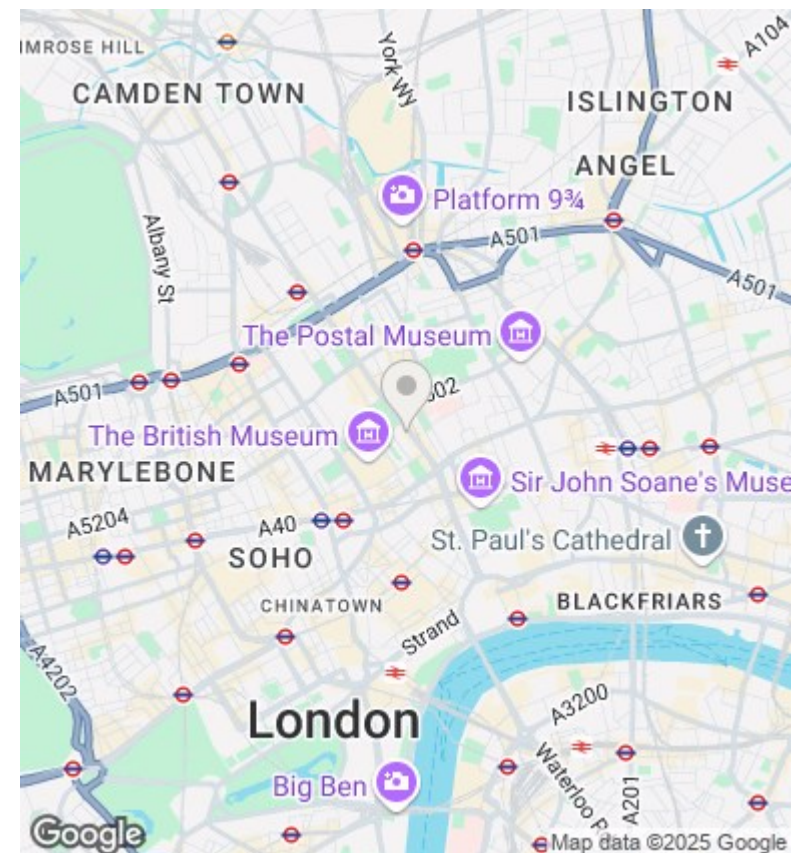
Viewings by arrangement only.  
Call 02077225022 to make an appointment.

## Council Tax Band

F

## EPC Rating:

B



Energy Efficiency Rating		
	Current	Potential
Very energy efficient - lower running costs		
(92-plus) <b>A</b>		
(81-91) <b>B</b>	82	77
(69-80) <b>C</b>		
(55-68) <b>D</b>		
(39-54) <b>E</b>		
(21-38) <b>F</b>		
(1-20) <b>G</b>		
Not energy efficient - higher running costs		
<b>England &amp; Wales</b>	EU Directive 2002/91/EC	