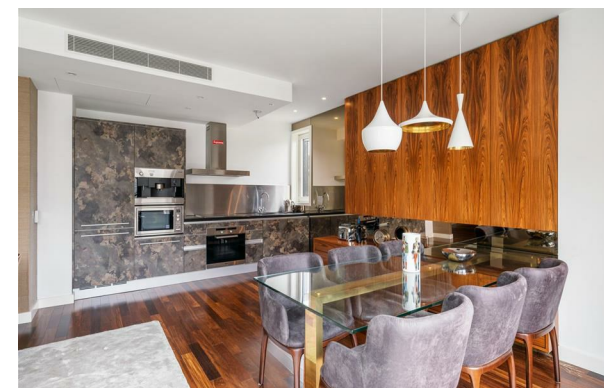
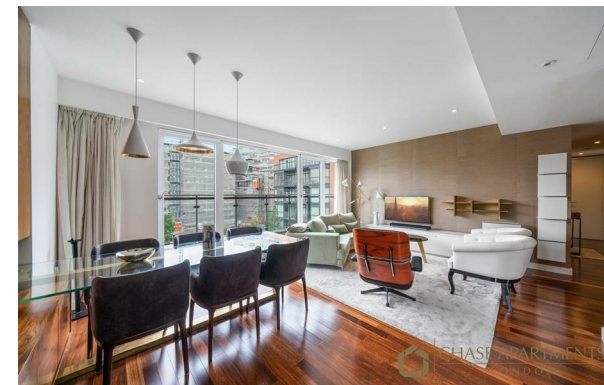




CHASE APARTMENTS  
LONDON



Hepworth Court, Grosvenor Waterside, Gatliff Road, Sloane Square SW1W 8QN

£1,677,000

- 24H CONCIERGE
- NEWLY REFURBISHED
- ONE SITE FOOD SHOP AND RESTAURANT
- PET FRIENDLY DEVELOPMENT
- ALLOCATED PARKING SPACE
- 2 BEDROOMS 2 BATHROOMS
- WALKING DISTANCE TO SLOANE SQUARE AND VICTORIA
- PRIVATE BALCONY
- UNDER FLOOR HEATING AND AIR COOLING
- MOMENTS AWAY FROM BATTERSEA PARK

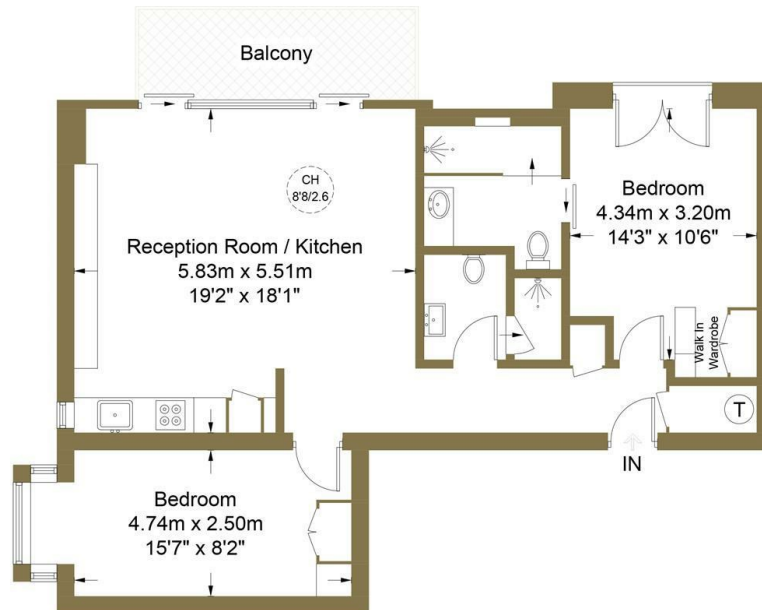
Grosvenor Waterside, 32 Gatliff Road, Belgravia, London, SW1W 8QN  
02077225022

<http://www.chaseapartments.com/>



## Hepworth Court, SW1W

Approximate Gross Internal Area = 79.0 sq m / 850 sq ft



### Fourth Floor



This plan is for layout guidance only. Not drawn to scale unless stated. Windows and door openings are approximate. Whilst every care is taken in the preparation of this plan, please check all dimensions, shapes and compass bearings before making any decisions reliant upon them. (ID983274)



## Viewings

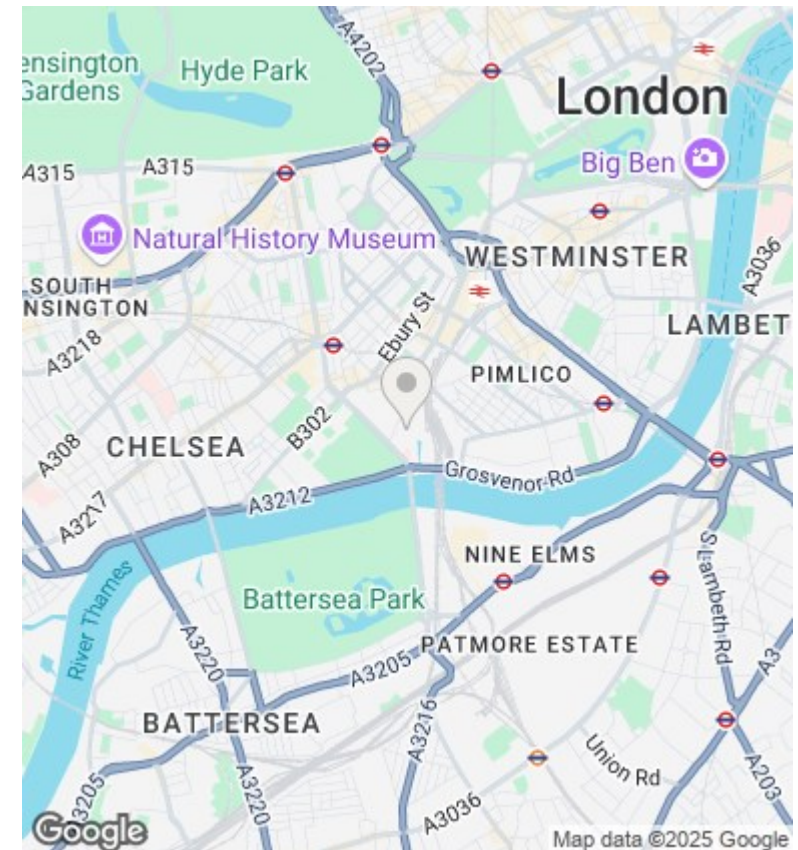
Viewings by arrangement only.  
Call 02077225022 to make an appointment.

## Council Tax Band

C

## EPC Rating:

C



Energy Efficiency Rating		
	Current	Potential
Very energy efficient - lower running costs		
(92 plus) A		
(81-91) B	80	81
(69-80) C		
(55-68) D		
(39-54) E		
(21-38) F		
(1-20) G		
Not energy efficient - higher running costs		
England & Wales	EU Directive 2002/91/EC	