



CHASE APARTMENTS  
LONDON



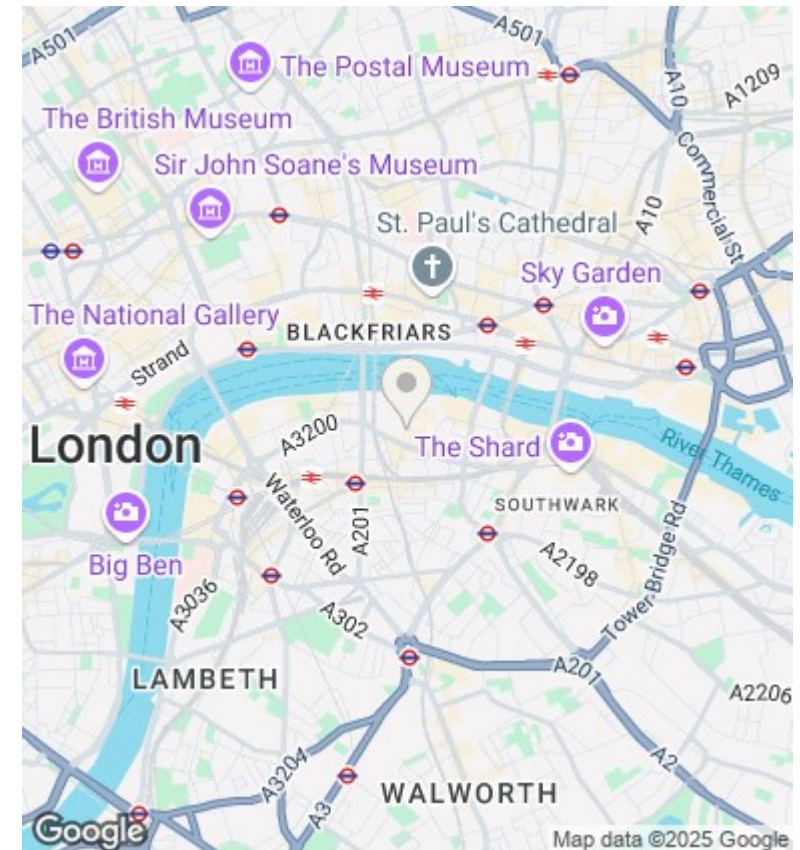
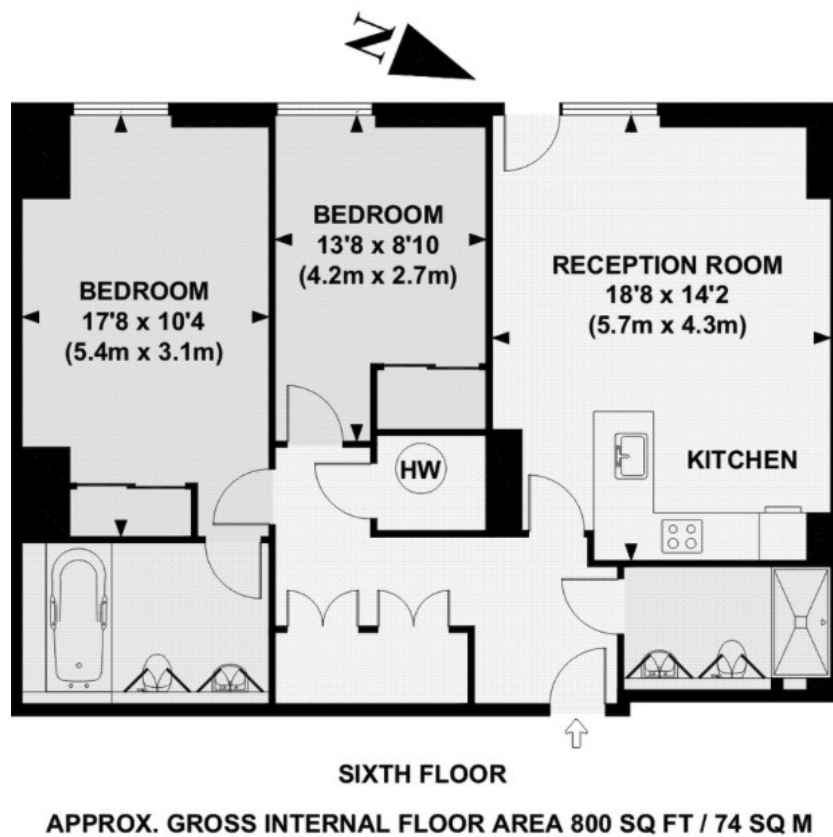
## Neo Bankside, 70 Holland Street, Southbank SE1 9NX

£3,683 Per Month

- Fully Furnished
- Business suite
- Approx. 800 sq foot
- Walking distance to Tate modern & Southbank
- 24 Hour concierge
- Beautifully landscaped communal gardens
- Available in August
- Private on-site gym and residents' leisure club
- 2 double bedrooms & 2 bathrooms
- Fully Fitted Kitchen

Grosvenor Waterside, 32 Gatliff Road, Belgravia, London, SW1W 8QN  
02077225022

<http://www.chaseapartments.com/>



## Viewings

Viewings by arrangement only.  
Call 02077225022 to make an appointment.

## Council Tax Band

G

## EPC Rating:

B

Energy Efficiency Rating		
	Current	Potential
Very energy efficient - lower running costs		
(92 plus) <b>A</b>		
(81-91) <b>B</b>	81	82
(69-80) <b>C</b>		
(55-68) <b>D</b>		
(39-54) <b>E</b>		
(21-38) <b>F</b>		
(1-20) <b>G</b>		
Not energy efficient - higher running costs		
<b>England &amp; Wales</b>	EU Directive 2002/91/EC	