



CHASE APARTMENTS
LONDON



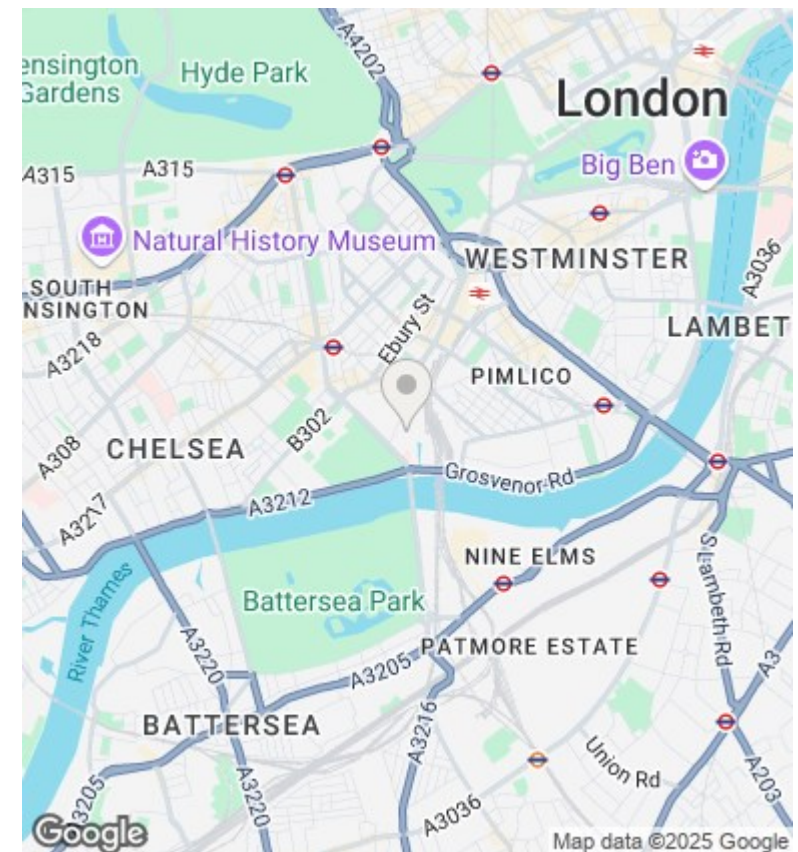
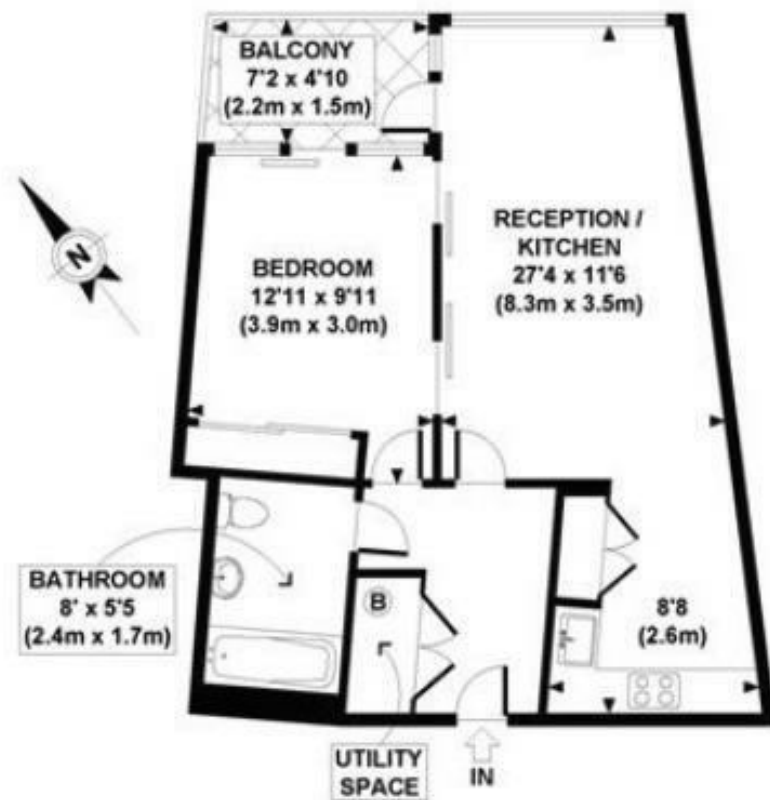
Hepworth Court, Gatliff Road, Grosvenor Waterside, Sloane Square SW1W 8QN

£3,500 Per Month

- 24/7 CONCIERGE
- PRIVATE BALCONY
- RESIDENCE GYM AND SPA
- MOMENTS AWAY FROM BATTERSEA PARK AND POWER STATION
- VIDEO VIEWING AVAILABLE
- FULLY FITTED OPEN KITCHEN
- ONSITE RESTAURANT AND FOOD SHOP
- UNDER FLOOR HEATING AND AIR COOLING
- SOUTH WEST FACING
- WALKING DISTANCE TO SLOANE SQUARE AND VICTORIA STATIONS

Grosvenor Waterside, 32 Gatliff Road, Belgravia, London, SW1W 8QN
02077225022

<http://www.chaseapartments.com/>



Viewings

Viewings by arrangement only.
Call 02077225022 to make an appointment.

Council Tax Band

D

EPC Rating:

Energy Efficiency Rating		
	Current	Potential
Very energy efficient - lower running costs		
(92 plus) A		
(81-91) B		
(69-80) C		
(55-68) D		
(39-54) E		
(21-38) F		
(1-20) G		
Not energy efficient - higher running costs		
England & Wales	EU Directive 2002/91/EC	