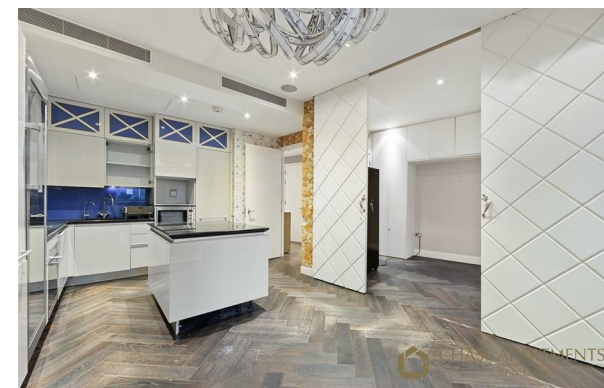
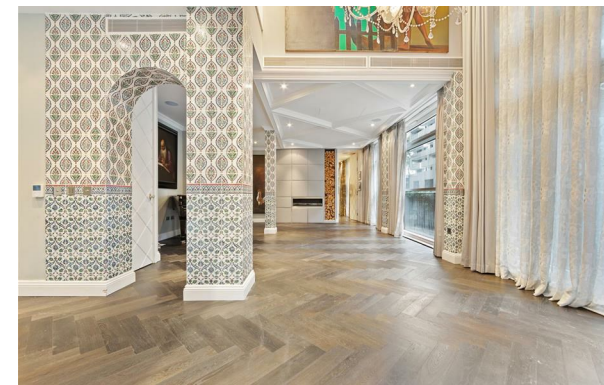




CHASE APARTMENTS
LONDON



Hepworth Court, Gatliff Road, Grosvenor Waterside SW1W 8QN

£7,950 Per Month

- 24 Hour concierge
- Dock views
- Private terrace
- Underground parking
- Video viewing available
- Under floor heating and air cooling
- Close to Sloane Square and Victoria
- Gym and spa
- Oak floors
- Riverside Development

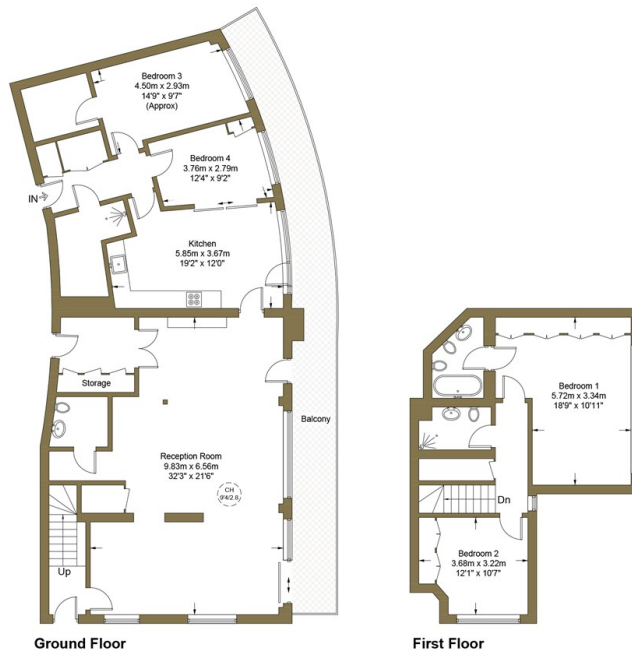
Grosvenor Waterside, 32 Gatliff Road, Belgravia, London, SW1W 8QN
02077225022

<http://www.chaseapartments.com/>



Hepworth Court, SW1W

Approximate Gross Internal Area = 199.4 sq m / 2146 sq ft



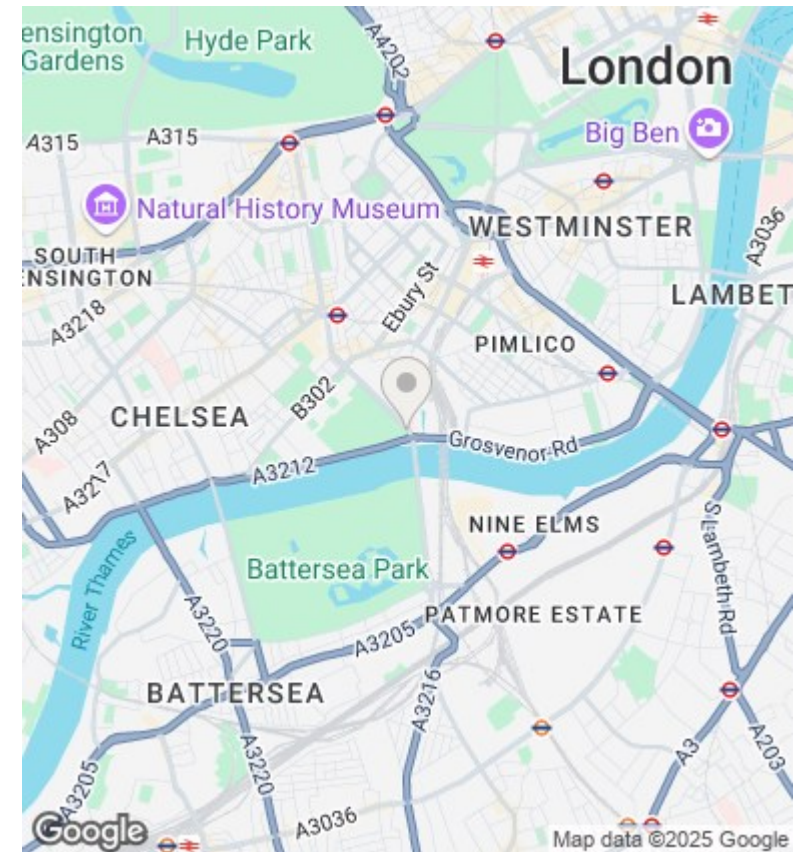
Ground Floor

First Floor

This plan is for layout guidance only. Not drawn to scale unless stated. Windows and door openings are approximate. Whilst every care is taken in the preparation of this plan, please check all dimensions, shapes and compass bearings before making any decisions reliant upon them. (ID700355)



CHASE APARTMENTS
LONDON



Viewings

Viewings by arrangement only.
Call 02077225022 to make an appointment.

Council Tax Band

F

EPC Rating:

Energy Efficiency Rating		
	Current	Potential
Very energy efficient - lower running costs		
(92-plus) A		
(81-91) B		
(69-80) C		
(55-68) D		
(39-54) E		
(21-38) F		
(1-20) G		
Not energy efficient - higher running costs		
England & Wales		EU Directive 2002/91/EC