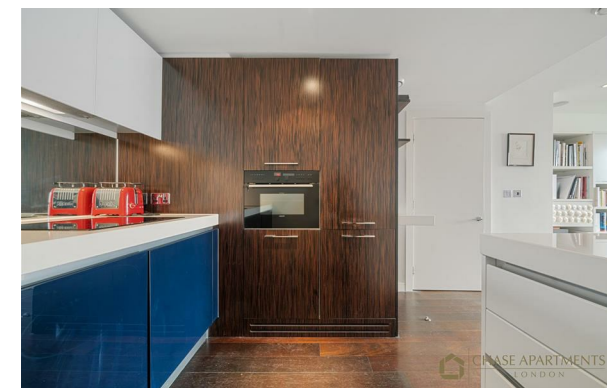




CHASE APARTMENTS
LONDON



Bramah House, Grosvenor Waterside, Gatliff Road, Sloane Square SW1W 8DQ

£625,000

- ALLOCATED PARKING SPACE
- WOODEN FLOORS
- ONSITE RESTAURANT AND FOOD SHOP
- ESW1 AVAILABLE
- 24/7 CONCIERGE
- PRIVATE GARDEN AND BATTERSEA POWER STATION VIEWS
- WALKING DISTANCE TO BATTERSEA PARK AND BATTERSEA POWER STATION
- UNDER FLOOR HEATING
- RESIDENCE GYM AND SPA
- MOMENTS AWAY FROM SLOANE SQUARE , KINGS ROAD AND VICTORIA

Grosvenor Waterside, 32 Gatliff Road, Belgravia, London, SW1W 8QN
02077225022

<http://www.chaseapartments.com/>

Approx. Gross Internal Area 522 Sq Ft - 48.49 Sq M



Viewings

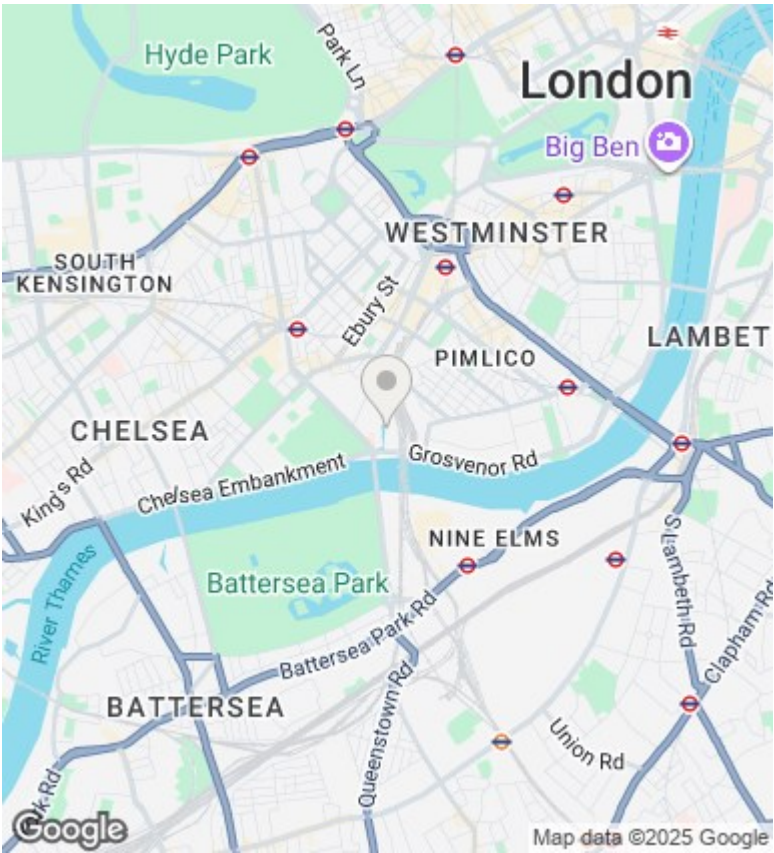
Viewings by arrangement only.
Call 02077225022 to make an appointment.

Council Tax Band

E

EPC Rating:

B



Energy Efficiency Rating		
	Current	Potential
Very energy efficient - lower running costs		
(92-plus) A		
(81-91) B	83	84
(69-80) C		
(55-68) D		
(39-54) E		
(21-38) F		
(1-20) G		
Not energy efficient - higher running costs		
England & Wales	EU Directive 2002/91/EC	