



CHASE APARTMENTS
LONDON



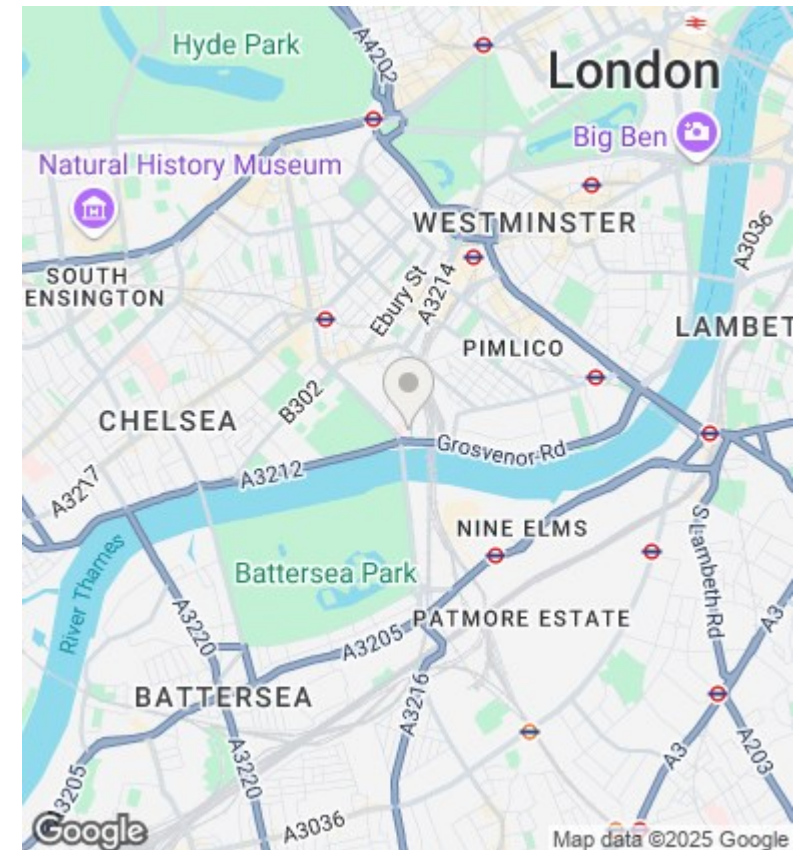
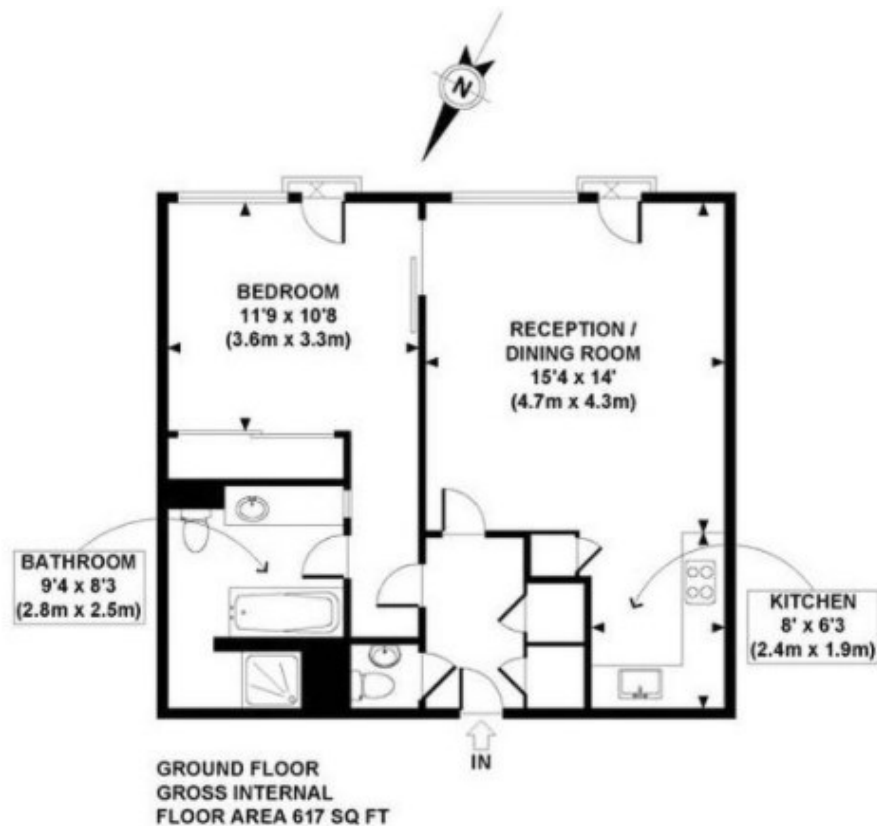
Grosvenor Waterside, 20 Gatliff Road SW1W 8QD

£2,500 Per Month

- 24 hour concierge
- 2 bathrooms
- Onsite restaurant and food shop
- Approx. 617 sq foot
- Unfurnished apartment
- Wooden floor throughout
- Walking distance to Sloane Square and Victoria
- Underfloor heating and Air cooling
- Moments away from Battersea Park
- Located on the Ground floor

Grosvenor Waterside, 32 Gatliff Road, Belgravia, London, SW1W 8QN
02077225022

<http://www.chaseapartments.com/>



Viewings

Viewings by arrangement only.
Call 02077225022 to make an appointment.

Council Tax Band

E

EPC Rating:

D

Energy Efficiency Rating		
	Current	Potential
Very energy efficient - lower running costs		
(92 plus) A		
(81-91) B		
(69-80) C		
(55-68) D	58	61
(39-54) E		
(21-38) F		
(1-20) G		
Not energy efficient - higher running costs		
England & Wales	EU Directive 2002/91/EC	