



CHASE APARTMENTS  
LONDON



## Hirst Court, Grosvenor Waterside , Gatliff Road SW1W 8QD

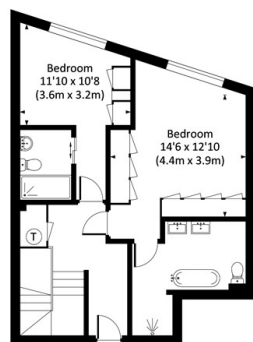
£2,250,000

- video viewing available
- sonos speak system
- newly refurbished
- allocated underground parking space
- 24 hour concierge
- duplex
- on site nursery Purple Dragon
- under floor heating and air cooling
- 3 en-suite bathrooms
- furnished or unfurnished

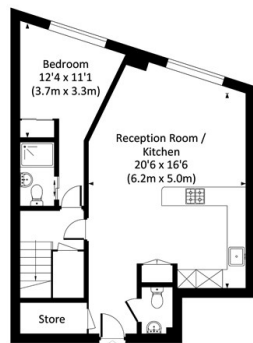
Grosvenor Waterside, 32 Gatliff Road, Belgravia, London, SW1W 8QN  
02077225022

<http://www.chaseapartments.com/>

Approx. gross internal area  
1314 Sq Ft. / 122.1 Sq M.

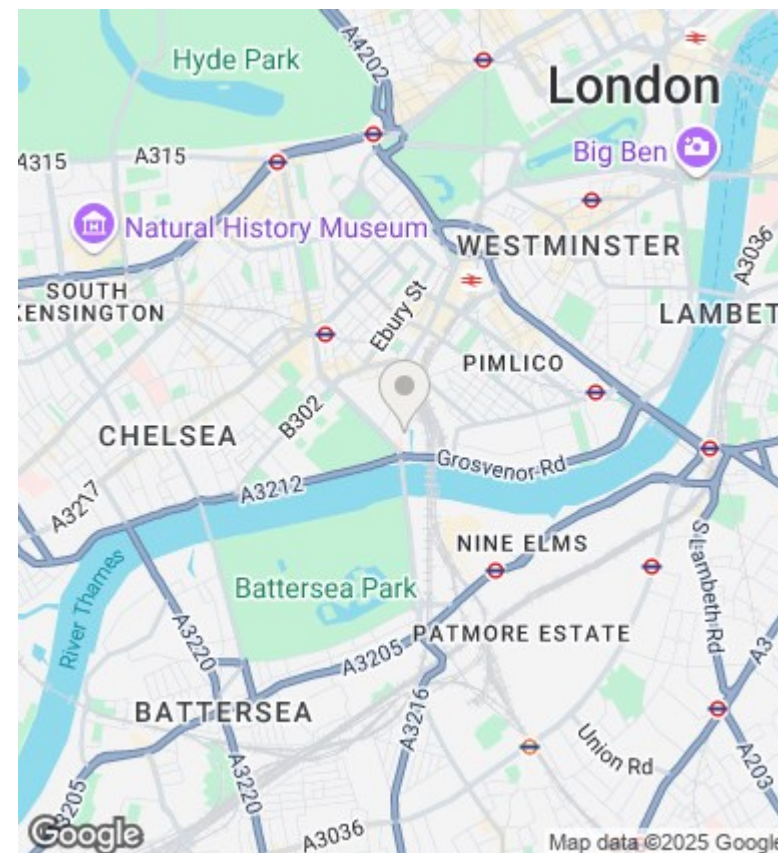


SEVENTH FLOOR



SIXTH FLOOR

djs All measurements have been made in accordance with RICS code of Measuring Practice which are approximate only and only for illustrative purposes. For the avoidance of doubt, Dowling Jones Design shall not be liable for any reliance on these measurements. © 2019 www.dowlingjones.com 020 7610 9933



## Viewings

Viewings by arrangement only.  
Call 02077225022 to make an appointment.

## Council Tax Band

G

## EPC Rating:

B

Energy Efficiency Rating		
	Current	Potential
Very energy efficient - lower running costs		
(92-plus) <b>A</b>		
(81-91) <b>B</b>	81	81
(69-80) <b>C</b>		
(55-68) <b>D</b>		
(39-54) <b>E</b>		
(21-38) <b>F</b>		
(1-20) <b>G</b>		
Not energy efficient - higher running costs		
<b>England &amp; Wales</b>	EU Directive 2002/91/EC	