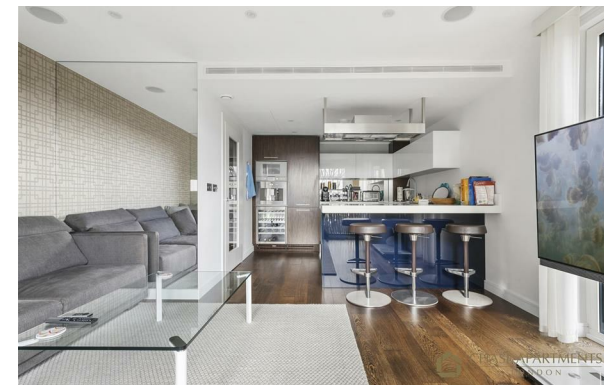
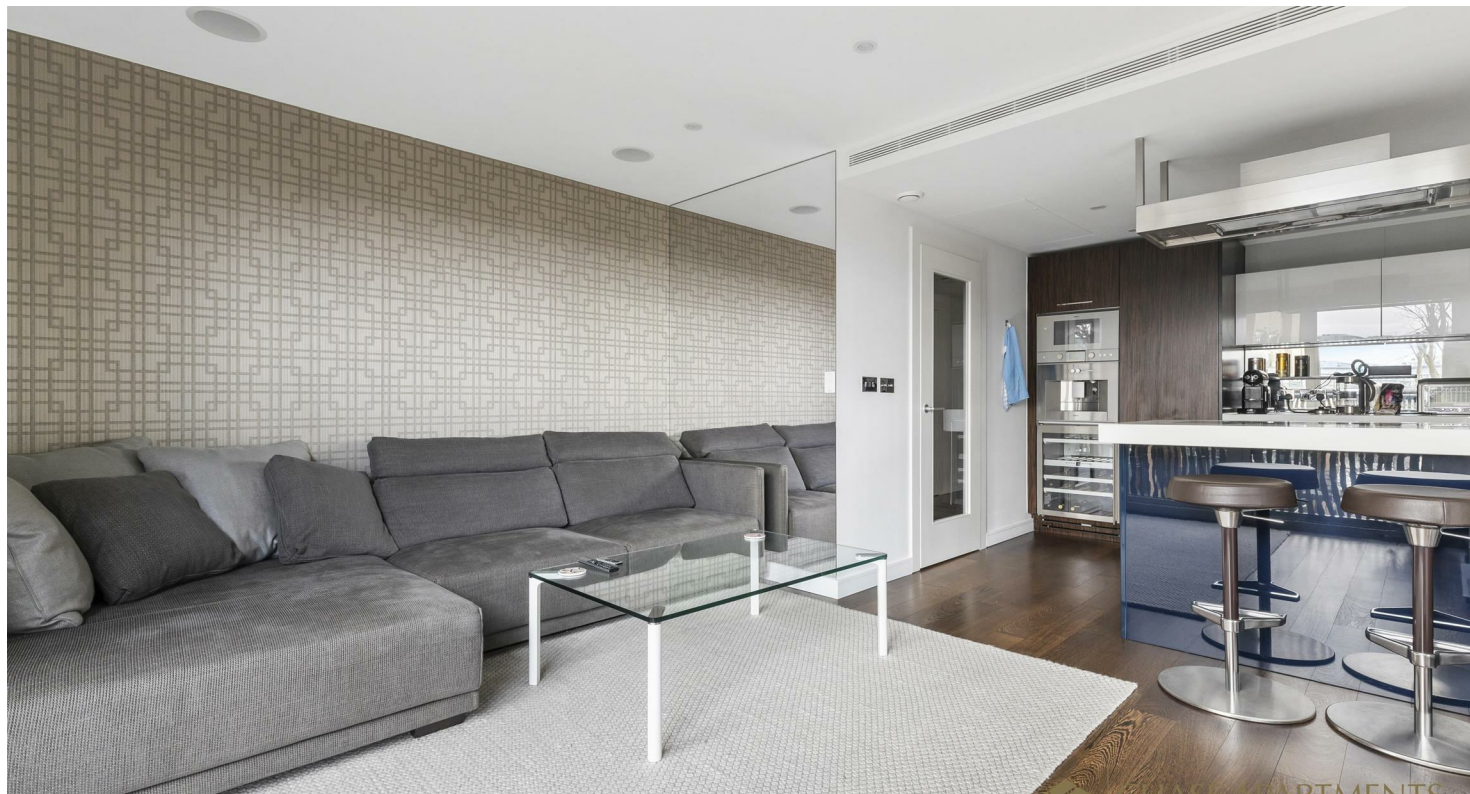




CHASE APARTMENTS
LONDON



Bramah House, Grosvenor Waterside, Gatliff Road, Sloane Square SW1W 8DQ

£1,275,000

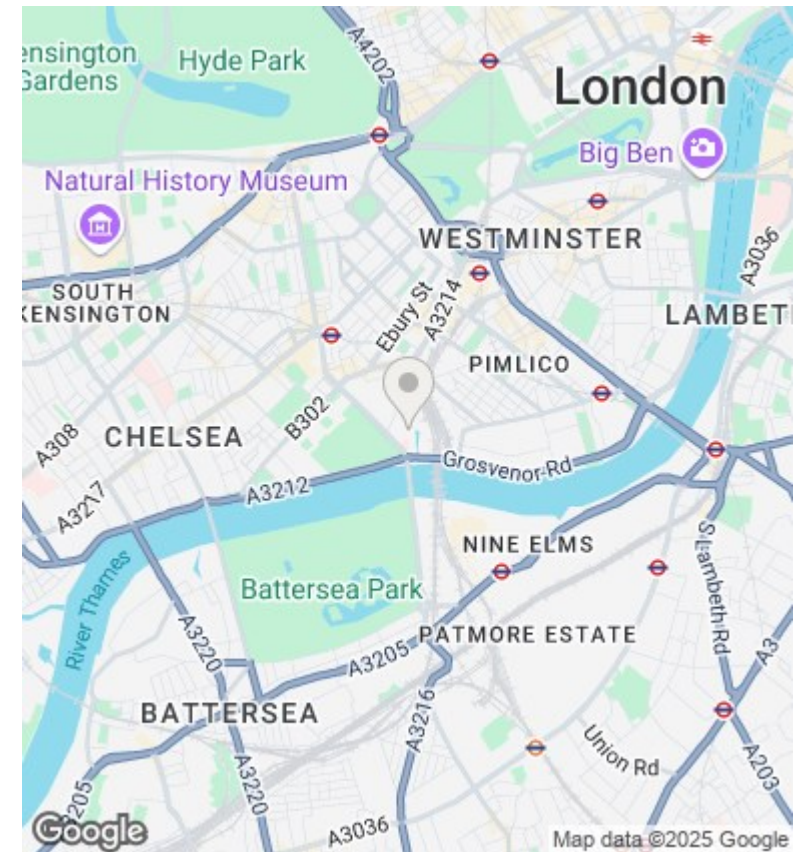
- 24/7 CONCIERGE
- SOUTH FACING
- RESIDENCE GYM AND SPA
- VIDEO VIEWING AVAILABLE
- ALLOCATED PARKING SPACE
- MOMENTS AWAY FROM SLOANE SQUARE , VICTORIA AND BATTERSEA POWER STATION TRANSPORT LINKS
- NEWLY REFURBISHED
- AIR COOLING AND UNDER FLOOR HEATING
- WALKING DISTANCE TO BATTERSEA PARK

Grosvenor Waterside, 32 Gatliff Road, Belgravia, London, SW1W 8QN
02077225022

<http://www.chaseapartments.com/>

BRAMAH HOUSE, GATLIFF ROAD, SW1

Gross Internal Area: 81 Sq. metres
872 Sq. feet



Viewings

Viewings by arrangement only.
Call 02077225022 to make an appointment.

Council Tax Band

D

EPC Rating:

B

Energy Efficiency Rating		
	Current	Potential
Very energy efficient - lower running costs		
(92 plus) A		
(81-91) B	83	84
(69-80) C		
(55-68) D		
(39-54) E		
(21-38) F		
(1-20) G		
Not energy efficient - higher running costs		
England & Wales	EU Directive 2002/91/EC	