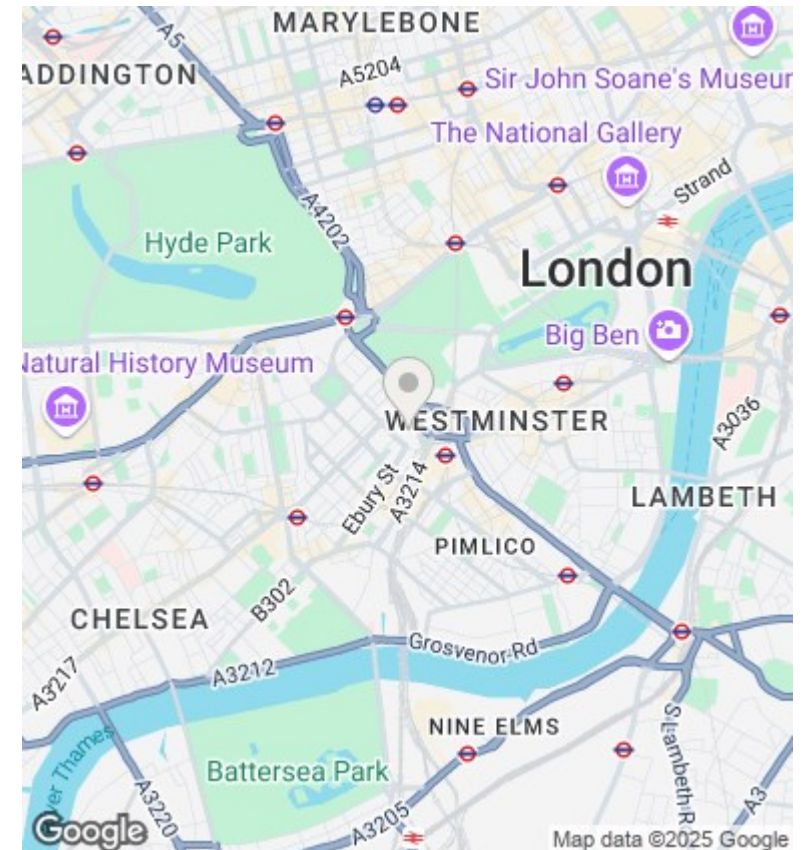
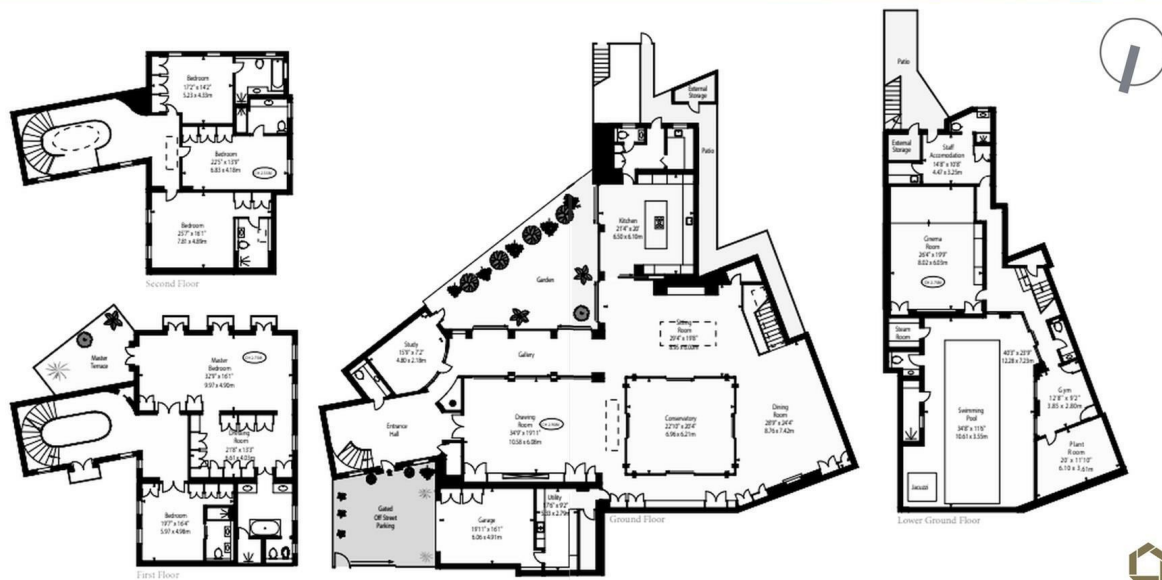




## Grosvenor Gardens Mews North, London SW1W 0JP

£86,666 Per Month

- Finished to the highest of standards
- Swimming Pool & Steam room
- Courtyard Garden
- Available now for viewings exclusively with Chase Apartments
- Approx 11,000 sq foot
- Gym
- Gated off street parking & Garage
- 6 Bedroom 5 Ensuite, 4 Reception rooms
- Cinema Room
- Fully Furnished



## Viewings

Viewings by arrangement only.  
Call 02077225022 to make an appointment.

## Council Tax Band

H

## EPC Rating:

B

Energy Efficiency Rating		
	Current	Potential
Very energy efficient - lower running costs		
(92-plus) <b>A</b>		
(81-91) <b>B</b>	82	83
(69-80) <b>C</b>		
(55-68) <b>D</b>		
(39-54) <b>E</b>		
(21-38) <b>F</b>		
(1-20) <b>G</b>		
Not energy efficient - higher running costs		
<b>England &amp; Wales</b>	EU Directive 2002/91/EC	