



CHASE APARTMENTS
LONDON



Knightsbridge, London SW7 1RH

£8,000 Per Week

- Views of Hyde Park
- Swimming pool
- Residents Lounge
- Available Now!
- 24 Hour Concierge
- Valet Parking
- Fitness Centre
- Residents only Kinesis Spa
- Business meeting rooms
- 2 Car parking spaces

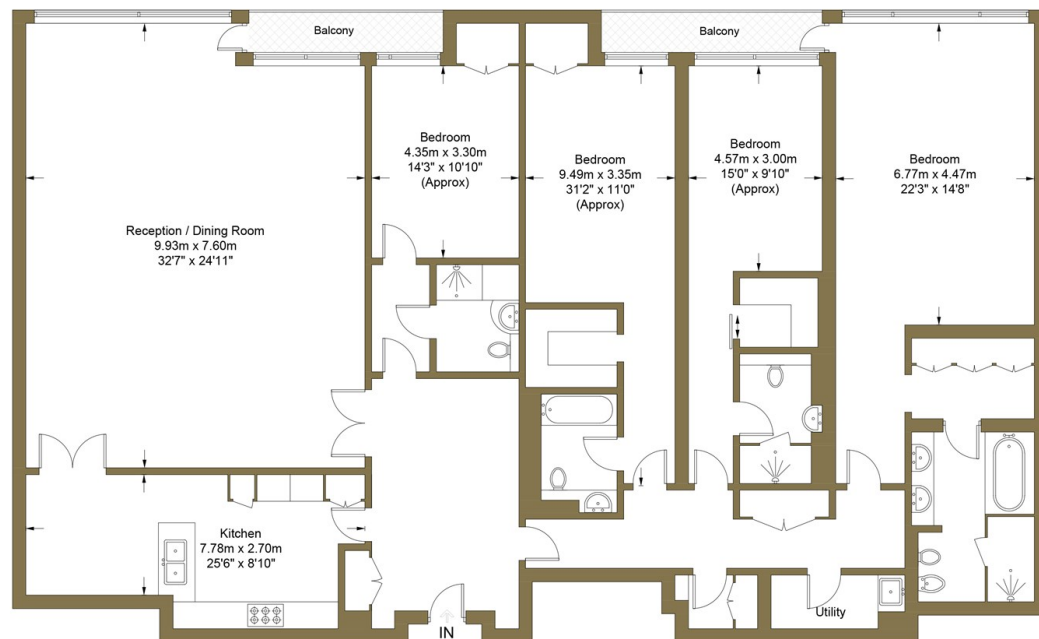
Grosvenor Waterside, 32 Gatliff Road, Belgravia, London, SW1W 8QN
02077225022

<http://www.chaseapartments.com/>



Knightsbridge, SW7

Approximate Gross Internal Area = 286.3 sq m / 3082 sq ft



Seventh Floor

This plan is for layout guidance only. Not drawn to scale unless stated. Windows and door openings are approximate. Whilst every care is taken in the preparation of this plan, please check all dimensions, shapes and compass bearings before making any decisions reliant upon them. (ID724453)



CHASE APARTMENTS
LONDON

Viewings

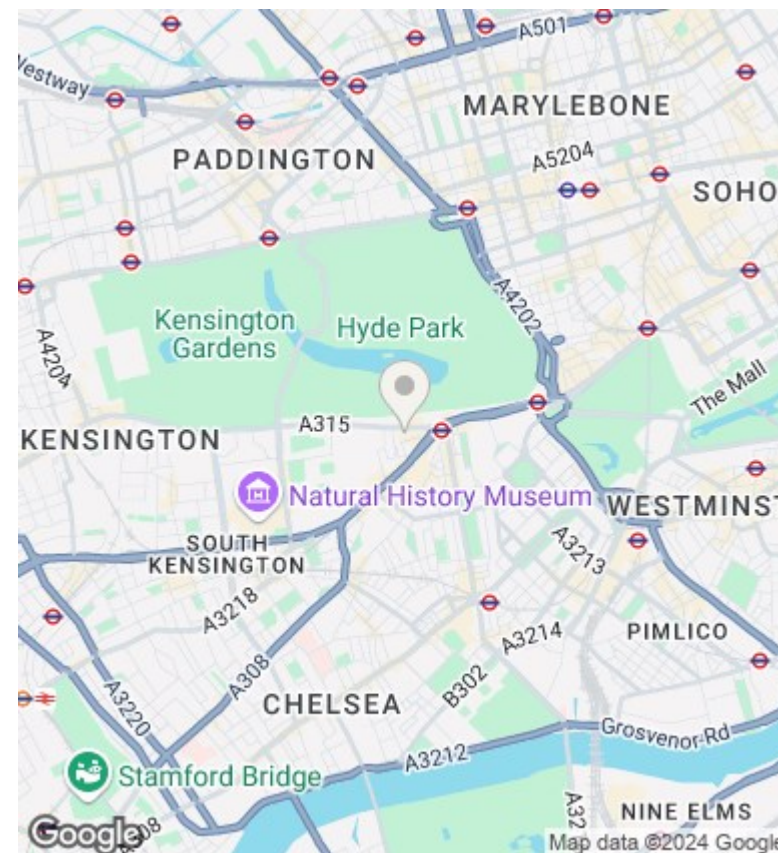
Viewings by arrangement only.
Call 02077225022 to make an appointment.

Council Tax Band

H

EPC Rating:

B



Energy Efficiency Rating

	Current	Potential
Very energy efficient - lower running costs		
(92-plus) A		
(81-91) B	87	87
(69-80) C		
(55-68) D		
(39-54) E		
(21-38) F		
(1-20) G		
Not energy efficient - higher running costs		
England & Wales	EU Directive 2002/91/EC	