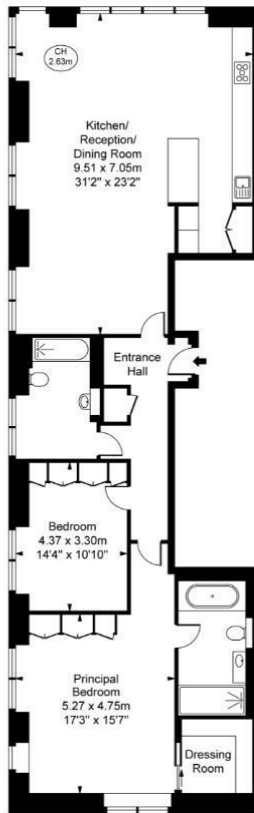




## Pavilion Court, Grosvenor Waterside, Gatliff Road SW1W 8QT

£1,850,000

- 24 HOUR CONCIERGE
- DOCK VIEWS
- RESIDENCE GYM AND SPA
- MOMENTS AWAY FROM SLOANE SQUARE AND KINGS ROAD
- LONG LEASE 999 FROM 1 JANUARY 2003
- 1450 SQ FEET
- ON SITE RESTAURANT AND FOOD SHOP
- UNDERFLOOR HEATING AND AIR COOLING
- ALLOCATED PARKING SPACE
- WALKING DISTANCE TO BATTERSEA PARK AND RIVER THAMES

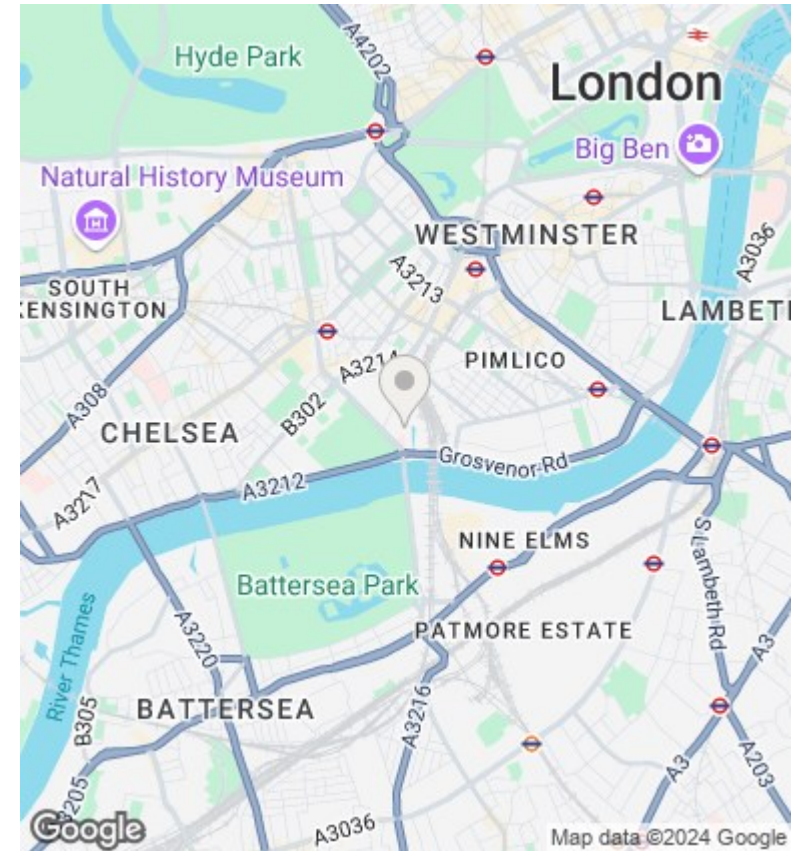


Pavilion Court,  
Gatliff Road, SW1W  
Approximate Gross Internal Area  
133.49 sq m / 1,437 sq ft

(CH = Ceiling Heights)



First Floor



## Viewings

Viewings by arrangement only.  
Call 02077225022 to make an appointment.

## Council Tax Band

H

## EPC Rating:

B

Energy Efficiency Rating		Current	Potential
<i>Very energy efficient - lower running costs</i>			
(92 plus)	A	84	
(81-91)	B		
(69-80)	C		
(55-68)	D		
(39-54)	E		
(21-38)	F		
(1-20)	G		
<i>Not energy efficient - higher running costs</i>			
<b>England &amp; Wales</b>		EU Directive 2002/91/EC	